



ESTATE AGENTS

www.cwestateagents.co.uk



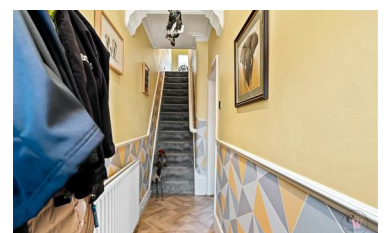
22 Gladstone Street, Winsford CW7 4BB

Offers in excess of £190,000



Set on a popular road in Winsford, this bay fronted period home is immaculately presented and offers a great sized home retaining a number of original features. The spacious accommodation consists of three reception areas currently setup as lounge/dining room, morning room with kitchen and utility room completing the ground floor. To the first floor there are three bedrooms and family bathroom. Externally this is a good size enclosed garden with brick built outhouse.

- Convenient location
- Three Bedrooms
- Utility Room
- Bay Fronted Semi-Detached
- Three Reception Rooms
- Good Size enclosed garden.



01606 514 152 info@cwestateagents.co.uk

@CWestateAgent @CWestateAgents