



NESBITT & SONS
ESTATE AGENTS



46 Carberry Drive, Fareham, PO16 9JD
£230,000

Situated in the desirable area of Carberry Drive, Portchester, this charming ground floor apartment offers a delightful living experience. Spanning an inviting 634 square feet, the property features two well-proportioned bedrooms, a comfortable reception room, and a modern fitted kitchen, making it an ideal choice for couples, small families, or those seeking a peaceful retreat.

One of the standout features of this apartment is its large front garden, which provides a lovely outdoor space to enjoy the fresh air. Additionally, the enclosed south-facing rear garden is perfect for those sunny days, offering a private area for relaxation or entertaining guests. The property is conveniently located just a short walk from the shoreline, allowing residents to enjoy scenic walks and the beauty of coastal living.

While the apartment is in need of a little updating, it presents a wonderful opportunity for buyers to personalise the space to their taste. With no forward chain, the process of moving in can be swift and straightforward, making it an attractive option for those looking to settle in quickly.

This property is a rare find in a sought-after location, combining comfort, potential, and a lovely outdoor space. Whether you are looking to invest or find your new home, this apartment on Carberry Drive is certainly worth considering.

Entrance Hallway

Bedroom One 13'9 x 9'10 (4.19m x 3.00m)

Bedroom Two 9'4 x 7'4 (2.84m x 2.24m)

Kitchen 11'3 x 7'5 (3.43m x 2.26m)

Bathroom 8'1 x 6'2 (2.46m x 1.88m)

Living Room 14'11 x 11'6 (4.55m x 3.51m)

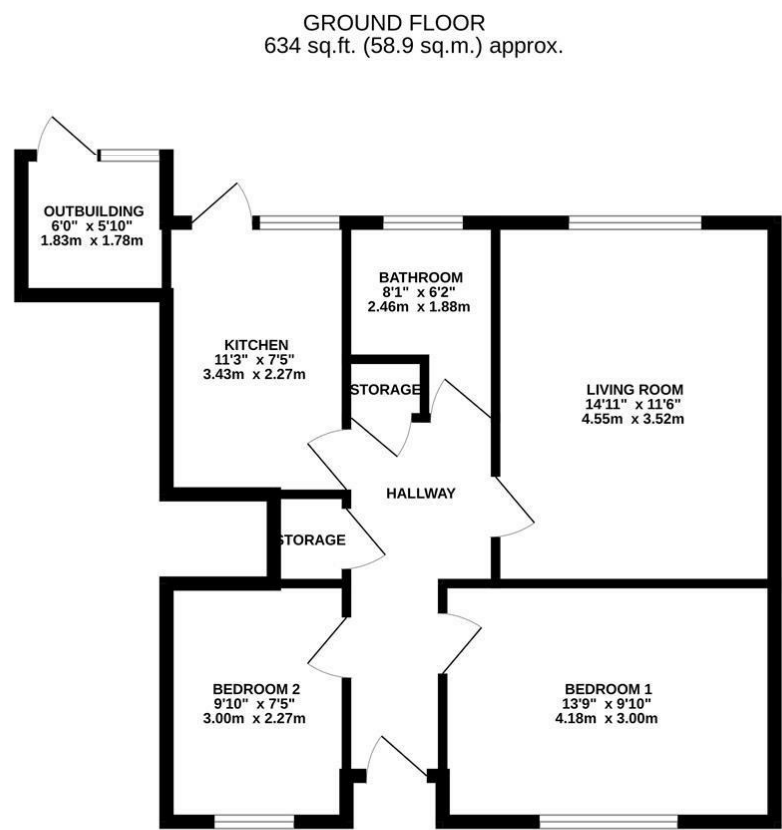
Outside

Front Garden

Rear Garden

Outbuilding

Floor Plan



2 BEDROOM FLAT

TOTAL FLOOR AREA: 634 sq.ft. (58.9 sq.m.) approx.

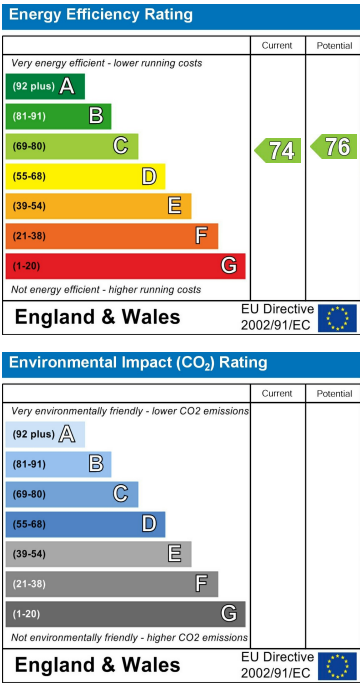
Whilst every attempt has been made to ensure the accuracy of the floorplan contained herein, measurements of doors, windows, rooms and any other items are approximate and no responsibility is taken for any error, omission or mis-statement. This plan is for illustrative purposes only and should be used as such by any prospective purchaser. The services, systems and appliances shown have not been tested and no guarantee as to their operability or efficiency can be given.

Made with Metropix ©2025

Area Map



Energy Efficiency Graph



These particulars, whilst believed to be accurate are set out as a general outline only for guidance and do not constitute any part of an offer or contract. Intending purchasers should not rely on them as statements of representation of fact, but must satisfy themselves by inspection or otherwise as to their accuracy. No person in this firms employment has the authority to make or give any representation or warranty in respect of the property.