



NESBITT & SONS
ESTATE AGENTS



36 Chapel Court Pyrford Close, Waterlooville, PO7 6GJ

£269,950

Welcome to this superb purpose-built first-floor apartment located in the desirable Chapel Court on Pyrford Close, Waterlooville. This modern residence boasts a high specification throughout, making it an ideal choice for those seeking comfort and style.

As you enter, you are greeted by a spacious open-plan living room and kitchen, perfect for both relaxation and entertaining. The layout allows for a seamless flow between the living and dining areas, creating a warm and inviting atmosphere. The kitchen is well-equipped and to a high standard, providing an excellent space for culinary enthusiasts.

The apartment features two well-proportioned bedrooms, with the stunning master bedroom benefiting from an en-suite bathroom, offering a private retreat for relaxation. The second bedroom is versatile and can be used as a guest room or a home office, catering to your individual needs.

Communal Entrance

Entrance Hallway 9'11 x 3'7 (3.02m x 1.09m)



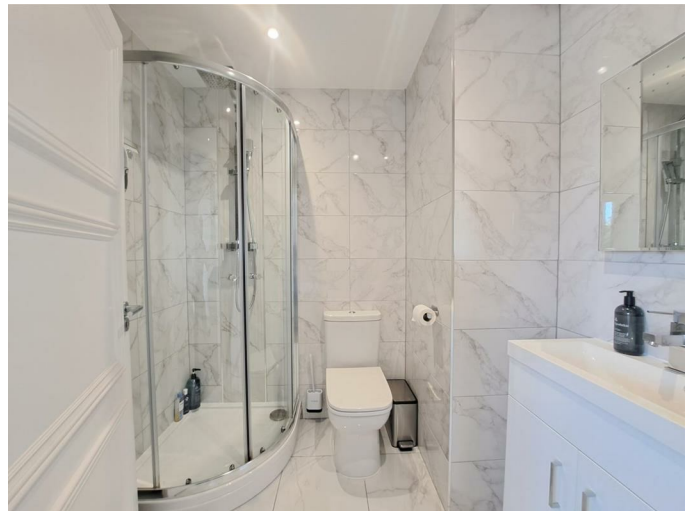
Family Bathroom Suite 11'2 max x 5'3 max (3.40m max x 1.60m max)



Master Bedroom 16'7 max x 11'7 max (5.05m max x 3.53m max)



En-Suite



Bedroom Two 11'2 x 8'7 (3.40m x 2.62m)



Open Plan Living/Dining Room/Kitchen



Living Room 14'4 x 11'7 (4.37m x 3.53m)



Kitchen 11'6 x 10'1 (3.51m x 3.07m)



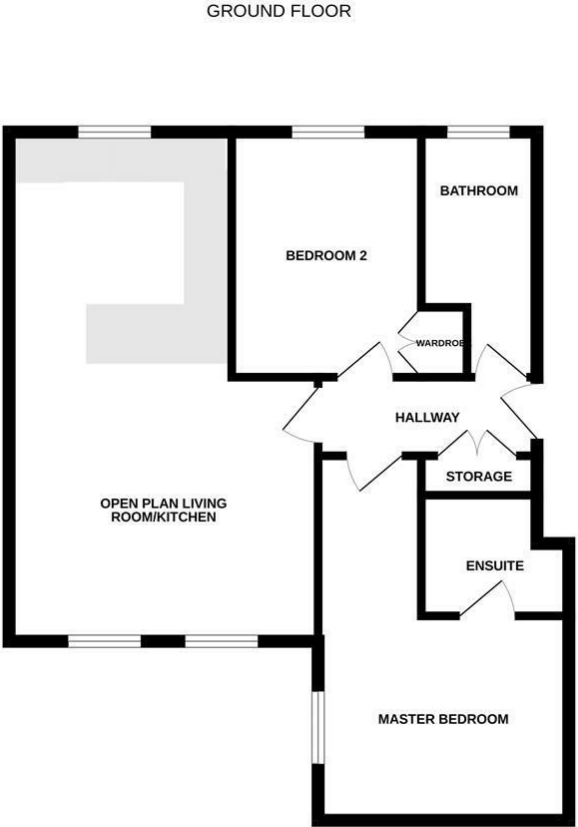
Outside

Communal Garden



Allocated Parking Space

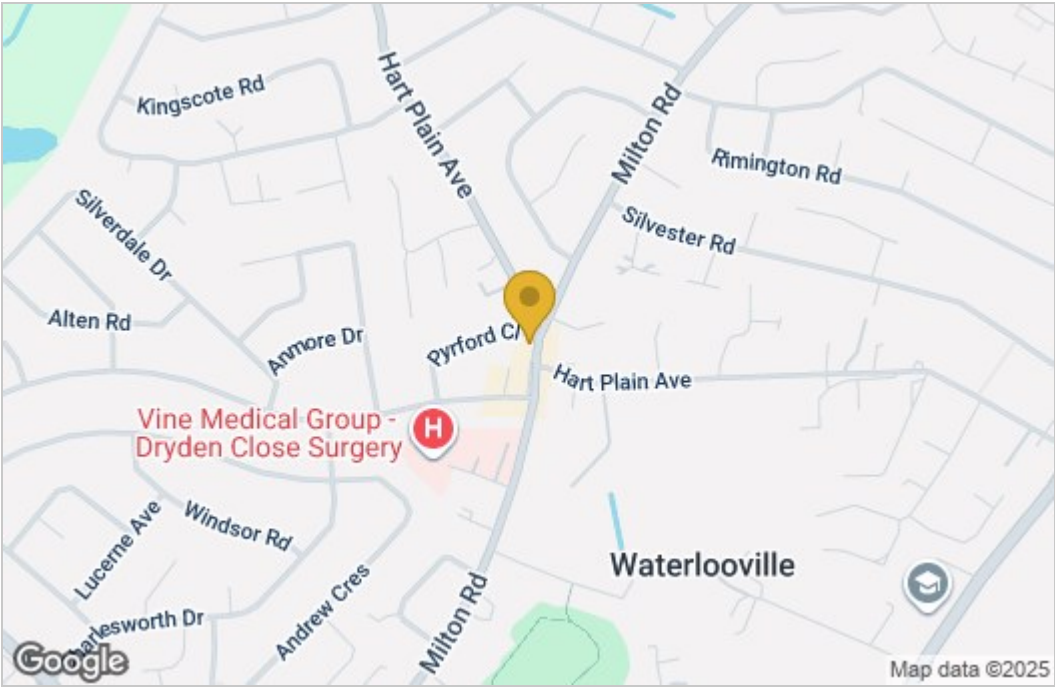
Floor Plan



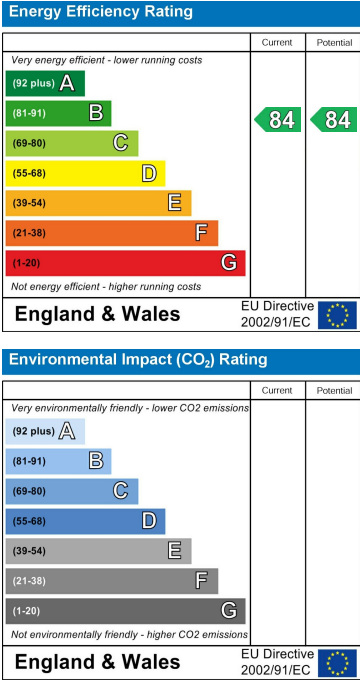
2 BEDROOM APARTMENT

Whilst every attempt has been made to ensure the accuracy of the floorplan contained here, measurements of doors, windows, rooms and any other items are approximate and no responsibility is taken for any error, omission or misstatement. This plan is for illustrative purposes only and should be used as such by any prospective purchaser. The services, systems and appliances shown have not been tested and no guarantee as to their operability or efficiency can be given.
Made with Metropix ©2025

Area Map



Energy Efficiency Graph



These particulars, whilst believed to be accurate are set out as a general outline only for guidance and do not constitute any part of an offer or contract. Intending purchasers should not rely on them as statements of representation of fact, but must satisfy themselves by inspection or otherwise as to their accuracy. No person in this firms employment has the authority to make or give any representation or warranty in respect of the property.