



NESBITT & SONS
ESTATE AGENTS



2 Leckford Close, Fareham, PO16 8DZ

£367,500

Tucked away in the much sought-after cul-de-sac of Leckford Close, Portchester, this charming semi-detached family home offers a delightful blend of comfort and convenience. With three well-proportioned bedrooms, this property is ideal for families looking for a welcoming space to call home.

The house features two welcoming reception rooms, providing ample space for relaxation and entertaining. The layout is designed to maximise both functionality and comfort, making it perfect for family gatherings or quiet evenings in. The bathroom is conveniently located, ensuring ease of access for all family members.

One of the standout features of this property is the generous parking space, accommodating up to three vehicles. This is a rare find in such a desirable location, allowing for hassle-free parking for family and guests alike.

Entrance Porch

Living room 15'4 x 13'8 (4.67m x 4.17m)



Dining Area 10'3 x 8'0 (3.12m x 2.44m)



Kitchen 10'3 x 7'3 (3.12m x 2.21m)



Landing



Bathroom 6'3 x 6'3 (1.91m x 1.91m)



Bedroom One 12'11 x 8'6 (3.94m x 2.59m)



Bedroom Two 9'2 x 9'0 (2.79m x 2.74m)



Bedroom Three 10'1 x 6'9 (3.07m x 2.06m)



Outside

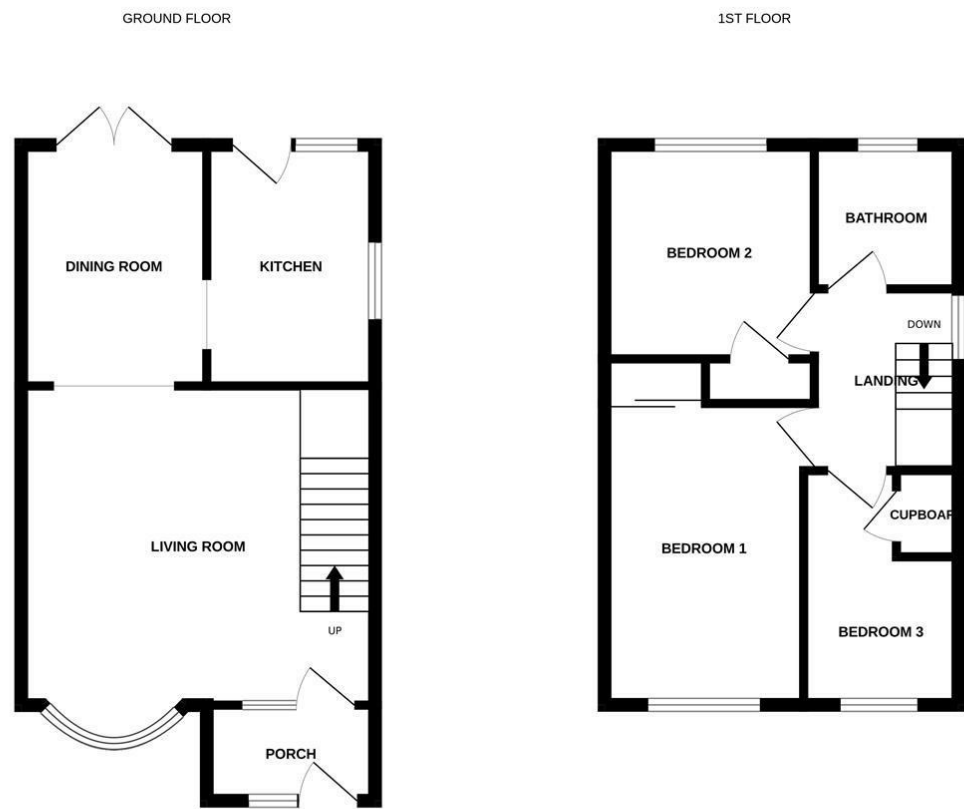
Driveway

Garage

Garden



Floor Plan



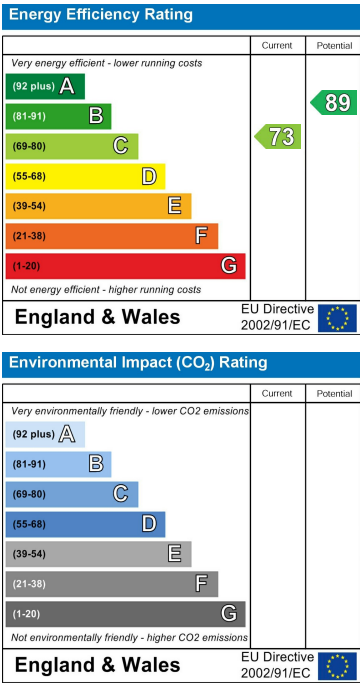
3 BEDROOM SEMI DETACHED HOUSE

Whilst every attempt has been made to ensure the accuracy of the floorplan contained here, measurements of doors, windows, rooms and any other items are approximate and no responsibility is taken for any error, omission or mis-statement. This plan is for illustrative purposes only and should be used as such by any prospective purchaser. The services, systems and appliances shown have not been tested and no guarantee as to their operability or efficiency can be given.
Made with Metropix ©2025

Area Map



Energy Efficiency Graph



These particulars, whilst believed to be accurate are set out as a general outline only for guidance and do not constitute any part of an offer or contract. Intending purchasers should not rely on them as statements of representation of fact, but must satisfy themselves by inspection or otherwise as to their accuracy. No person in this firms employment has the authority to make or give any representation or warranty in respect of the property.