



NESBITT & SONS
ESTATE AGENTS



44 The Crossway, Fareham, PO16 8PB
Offers in the region of £450,000

This beautifully presented and spacious four bedroom semi-detached chalet bungalow offers versatile and excellent family accommodation, located close to Portchester Railway Station and within walking distance of the village centre. Having been extended both upwards and outwards it has also been extensively refurbished and modernised and provides a wonderful open plan living and kitchen/dining space, four double bedrooms plus two newly refurbished shower rooms with the added benefit of a large south facing garden.

Entrance Hallway



Bedroom Four 10'7 into bay x 8'10 (3.23m into bay x 2.69m)



Bedroom Two 12'0 x 8'10 (3.66m x 2.69m)



Shower Room 9'3 x 4'4 (2.82m x 1.32m)



Living Room 15'9 x 10'11 (4.80m x 3.33m)



Bedroom One 15'2 max x 10'3 max (4.62m max x 3.12m max)



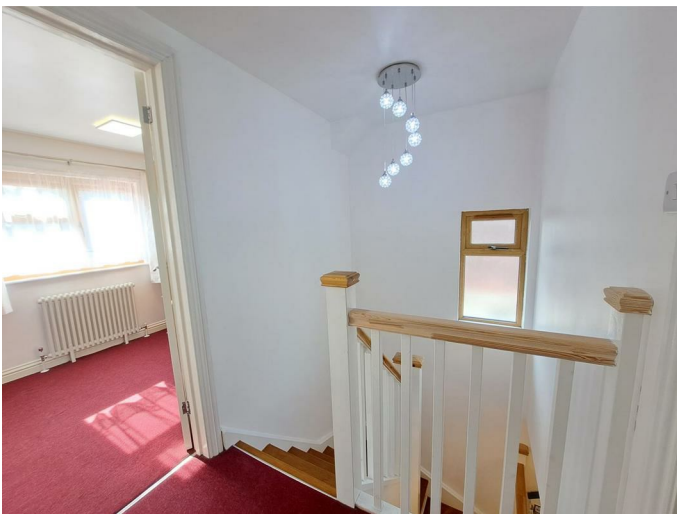
Kitchen/Diner 16'2 x 13'6 (4.93m x 4.11m)



Bedroom Three 11'5 x 9'2 (3.48m x 2.79m)



Landing



Shower Room 8'5 x 6'9 (2.57m x 2.06m)



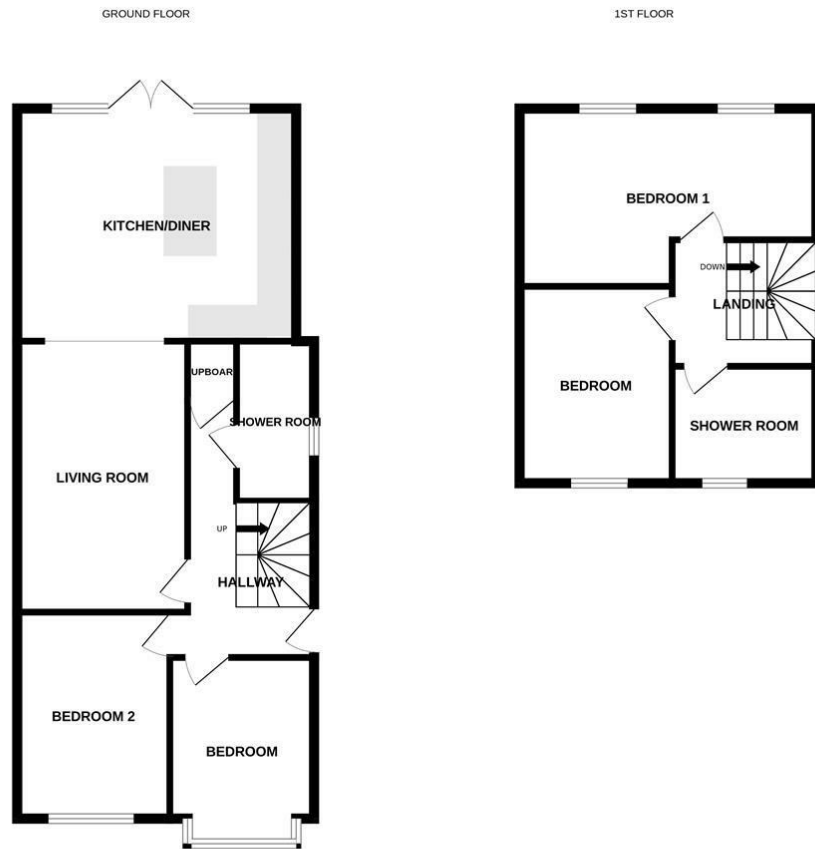
Outside

Driveway

Garden



Floor Plan



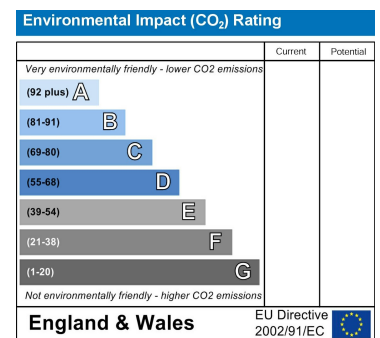
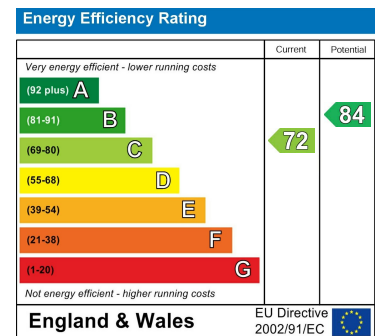
4 BEDROOM SEMI DETACHED

Whilst every attempt has been made to ensure the accuracy of the floorplan contained here, measurements of doors, windows, rooms and any other items are approximate and no responsibility is taken for any error, omission or no statement. This plan is for illustrative purposes only and should be used as such by any prospective purchaser. The services, systems and appliances shown have not been tested and no guarantee as to their operability or efficiency can be given.
Made with Metropix ©2024

Area Map



Energy Efficiency Graph



These particulars, whilst believed to be accurate are set out as a general outline only for guidance and do not constitute any part of an offer or contract. Intending purchasers should not rely on them as statements of representation of fact, but must satisfy themselves by inspection or otherwise as to their accuracy. No person in this firm's employment has the authority to make or give any representation or warranty in respect of the property.