



NESBITT & SONS
ESTATE AGENTS



Oaktree Wickham Road, Fareham, PO17 5BT
Guide price £725,000

*** LAST REMAINING UNIT ***

'Oaktree' is a superb newly built detached family residence designed around flexible living located on Wickham Road, Fareham, built by JIIG Developments Limited.

The property has been built to an extremely high specification featuring an energy efficient heating and hot water system complimented by a heat recovery ventilation unit which also filters the air supplies. Enhanced thermal insulation, network cabling throughout for hi-speed connectivity complimenting WFH and entertainment systems. There is a state of the art water treatment plant designed to minimise the impact on the environment, EV charging station and cycle storage.

Buyer incentives include a choice of kitchen finish, carpets and landscaped front and rear gardens.

Viewing is strongly recommended to fully appreciate the quality of finish and location on offer here.

Entrance Hall



Kitchen/Diner



Summer Room



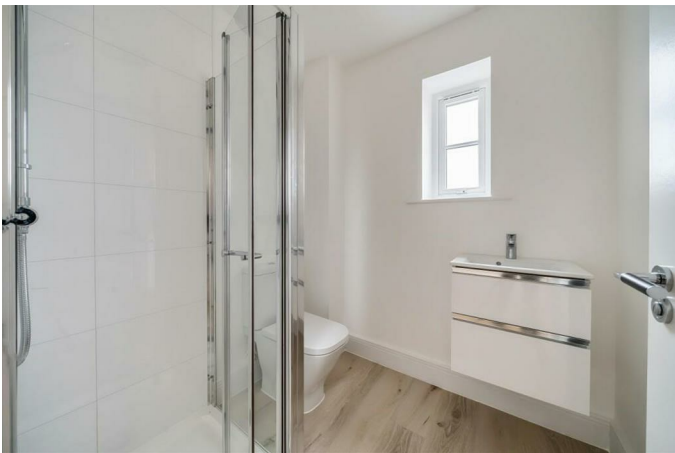
Study/Bedroom 4



Utility Room



Shower Room



Living Room



Bedroom Two



Gallery Landing

Master Bedroom



Bedroom Three

Family Bathroom



En-Suite Shower Room



Outside



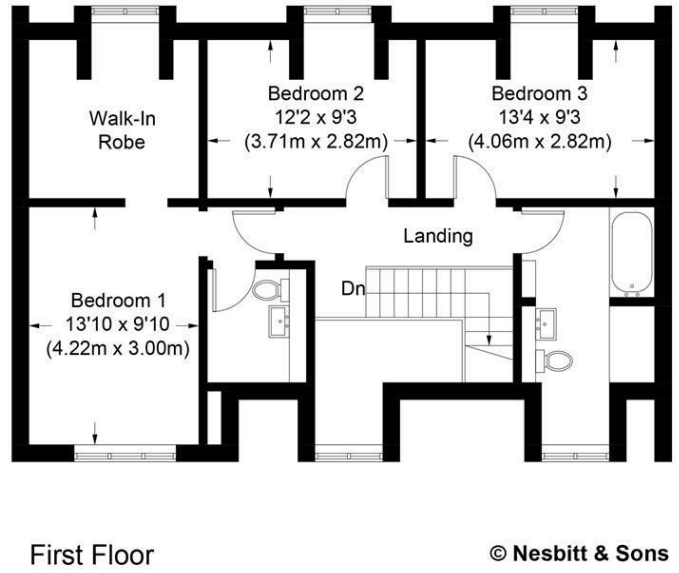
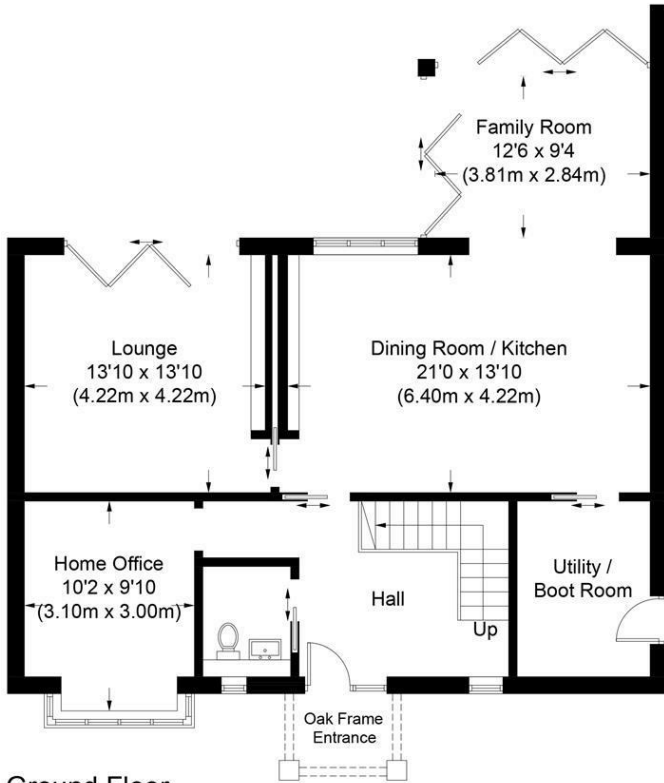
LOCATION

Wickham village is a stones throw away and features the second largest medieval market square in England forming the heart of this bustling village. From 15th century cottages to beautifully preserved Georgian houses, take time to appreciate the architectural details of the Square. With a number of independent shops selling unique gifts, chocolates, crafts and antiques as well as fantastic tea rooms and restaurants. Just a short walk from the Square are naturally formed Water Meadows, perfect for a walk, picnic or simply to spend some time by the water's edge. Wickham also marks the start of the Meon Valley Trail, a nine mile path on the old Meon Valley Railway Line stretching north towards the village of West Meon.

Floor Plan

Gingerbread Cottage, Wickham Road, Fareham, PO17 5BT

Approximate Gross Internal Floor Area
Total = 1842 Sq Ft / 171.2 Sq M



© Nesbitt & Sons

The Plan is for illustrative purposes only and is not to scale. If specified, the Gross Internal Area (GIA), dimensions, North point orientation and the size and placement of features are approximate and should not be relied on as a statement of fact. No guarantee is given for the GIA and no responsibility is taken for any error, omission or misrepresentation.

Area Map



Energy Efficiency Graph

Energy Efficiency Rating		Current	Potential
Very energy efficient - lower running costs			
(92 plus) A			
(81-91) B			
(69-80) C			
(55-68) D			
(39-54) E			
(21-38) F			
(1-20) G			
Not energy efficient - higher running costs			
England & Wales		EU Directive 2002/91/EC	
Environmental Impact (CO ₂) Rating		Current	Potential
Very environmentally friendly - lower CO ₂ emissions			
(92 plus) A			
(81-91) B			
(69-80) C			
(55-68) D			
(39-54) E			
(21-38) F			
(1-20) G			
Not environmentally friendly - higher CO ₂ emissions			
England & Wales		EU Directive 2002/91/EC	

These particulars, whilst believed to be accurate are set out as a general outline only for guidance and do not constitute any part of an offer or contract. Intending purchasers should not rely on them as statements of representation of fact, but must satisfy themselves by inspection or otherwise as to their accuracy. No person in this firm's employment has the authority to make or give any representation or warranty in respect of the property.