



NESBITT & SONS
ESTATE AGENTS



5 Whitehaven, Fareham, PO16 9AQ Offers in the region of £400,000

This lovely extended semi-detached bungalow is situated in the much requested cul de sac location of Whitehaven in Portchester which is close to a wide range of shops, local amenities and schools.

The property is beautifully presented throughout with the internal accommodation briefly comprising of - entrance porch, kitchen/breakfast room, lounge/diner, three double bedrooms, family bathroom and en-suite.

Outside at the front there is a driveway providing off street parking that leads to a detached garage/workshop and at the rear there is a stunning enclosed garden with an outbuilding which would make a perfect home office/studio.

Properties of this style in this location are rarely available so viewings are strongly recommended.

Entrance Porch

Kitchen/Breakfast Room 21'8 x 9'11 (6.60m x 3.02m)



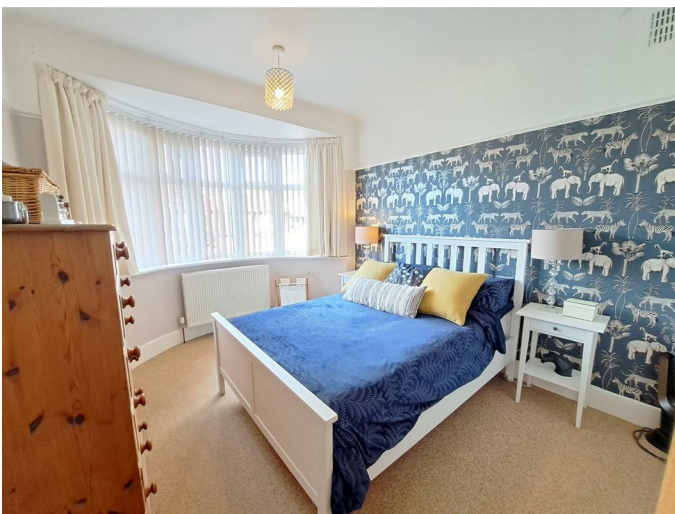
Family Bathroom



Lounge/Diner 24'6 x 10'11 (7.47m x 3.33m)



Bedroom Two 12'2 into bay x 9'11 (3.71m into bay x 3.02m)



Bedroom Three 12'11 x 10'10 (3.94m x 3.30m)



Second Floor

Master Bedroom 18'10 x 10'10 (5.74m x 3.30m)



En-Suite



Outside

Garage/Workshop 28'10 x 8'1 (8.79m x 2.46m)

Outbuilding 19'2 x 12'3 (5.84m x 3.73m)



Garden



Floor Plan

Whitehaven, PO16

Approximate Gross Internal Area = 101.1 sq m / 1088 sq ft
 Garage / Studio = 43.7 sq m / 470 sq ft
 Total = 144.8 sq m / 1558 sq ft

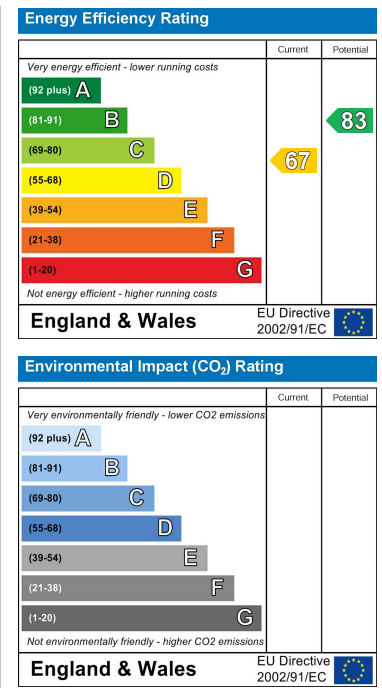


PRODUCED FOR ROK MARSH
 Whilst every attempt has been made to ensure the accuracy of the floorplan, measurements of doors, windows and rooms are approximate. These plans are for representation purposes only as defined by RICS Code of Measuring Practice and used as such by any prospective purchaser. (1D1005942)

Area Map



Energy Efficiency Graph



These particulars, whilst believed to be accurate are set out as a general outline only for guidance and do not constitute any part of an offer or contract. Intending purchasers should not rely on them as statements of representation of fact, but must satisfy themselves by inspection or otherwise as to their accuracy. No person in this firm's employment has the authority to make or give any representation or warranty in respect of the property.