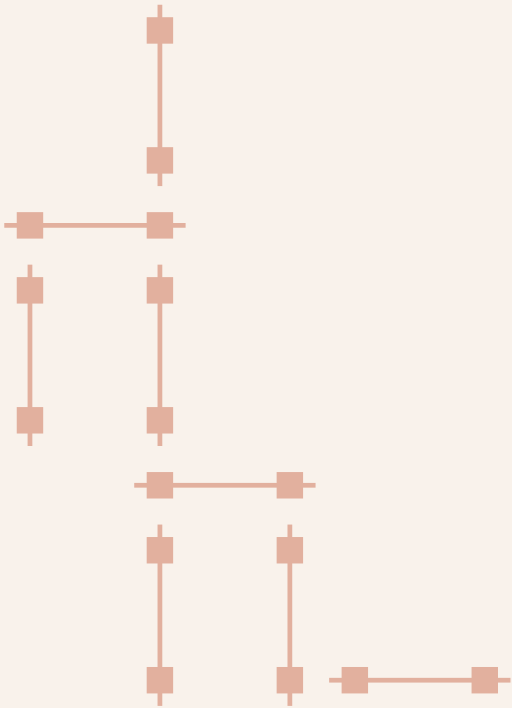
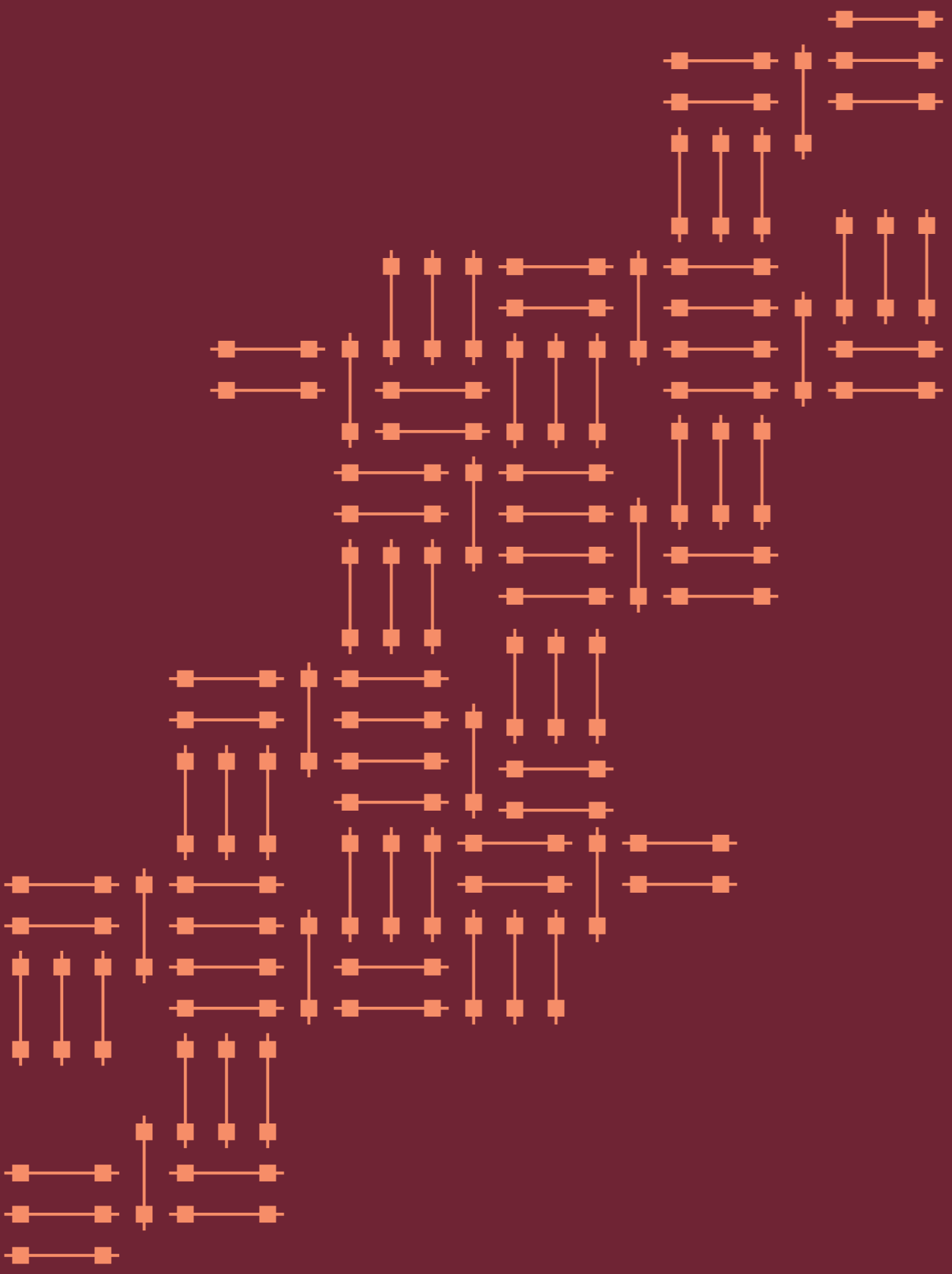


OLD
ELECTRICITY
WORKS

ST ALBANS



Discover a new, well-connected collection of one, two and three bedroom apartments, duplexes and townhouses with undercroft enclosed parking surrounding beautifully landscaped communal gardens in St Albans.



Computer generated image – indicative only.

Specification & Details



4

Kitchens

- Fully fitted designer handleless kitchen with cashmere coloured units
 - Quartz worktop and matching splashbacks
 - Integrated ceramic hob
 - Integrated single oven
 - Integrated dishwasher*
 - Stainless steel under-mounted sink
 - Polished chrome mixer tap
 - Extractor hood
 - Integrated fridge/freezer*
 - Integrated washer/dryer*
- *Bosch appliances or equivalent

Bathrooms

- Armera Opa vanity unit
- Duravit wall hung WC's
- Hansgrohe taps and shower fittings
- Full height Premier Stone tiled bathroom
- Mirrored cabinets
- Large shower with frameless screen to all flats
- Duravit bath to flats with two bathrooms

Electrics

- Spotlights to kitchen and bathrooms
- Wired for Sky Q
- TV points in lounge and bedrooms
- Telephone points in lounge
- USB points to lounge and bedrooms

Heating

- Electric boiler with designer radiators
- Underfloor heating to bathrooms

Flooring

- Amtico Barrel Grey flooring to lounge, kitchen and hallways
- Premier Stone floor tiles to all bathrooms and ensuites
- Cormar Tortilla carpets to all bedrooms (includes staircases and landing areas to houses)

Finishes, doors and woodwork

- Designer colour palettes to all walls, skirting and architraves
- Cashmere coloured matt wardrobe doors to master bedroom (including second bedroom in 3-bedroom apartments)
- High quality firecheck painted doors in white with chrome ironmongery

Warranty

- 10 Year Checkmate warranty

Amenities

- Concierge
- Roof terrace gardens
- Secure enclosed parking
- Remote controlled gated vehicle entrance
- Digitally controlled pedestrian entrance gate
- CCTV coverage

5



Computer generated images – indicative only.



A City of Culture

St Albans is a beautiful historic city with a vibrant centre, cultural attractions and a superb selection of eateries and shops.

St Albans has much to offer with a busy high street, quaint shopping lanes and independent shops sitting alongside The Maltings and Christopher Place shopping centres. Town centre restaurants include The Ivy, Côte Brasserie and Lussmans, as well as a generous selection of cafés, delis and charming pubs.

Old Electricity Works is located just a 12 minute walk to the city's mainline station, where trains travel into central London in less than half an hour providing great connectivity with the capital.



West Hampstead

St Albans Station

12
mins

4
mins

London St Pancras

City Centre

22
mins

6
mins

Farringdon

M25 Motorway

27
mins

9
mins

City Thameslink

Luton Airport

29
mins

25
mins





Old Electricity Works

With communal access to a central landscaped garden, Old Electricity Works offers a unique opportunity to live within a dynamically created new community in St Albans.

- | | | |
|--|--|--|
|  Armstrong House
Apartments A6 – A8
1 & 2 bedroom apartments |  Faraday House
Apartments F1 – F18
1, 2 & 3 bedroom apartments |  Edison House
Apartments E1 – E40
1, 2 & 3 bedroom apartments |
|  Brush House
Apartments B1 – B17
1, 2 & 3 bedroom apartments |  Goode House
Houses G1 – G3
3 bedroom houses |  Duddell House
Apartments D1 – D13
1, 2 & 3 bedroom apartments |
|  Clarke House
Apartments C1 – C6
1 & 2 bedroom apartments | | |



-  17 Charge Points
-  17 Future Charge Points

Armstrong House

Apartments A6 – A8

02

Level 02

Apartment A6

Living/Dining/Kitchen	6.57m x 4.50m	21'7" x 14'9"
Bedroom 1	3.69m x 3.38m	12'1" x 11'1"
Bedroom 2	3.90m x 3.01m	12'10" x 9'11"
Balcony	10.60m x 3.00m	34'9" x 9'10"
Total	70.4 sqm	758 sqft

Apartment A7

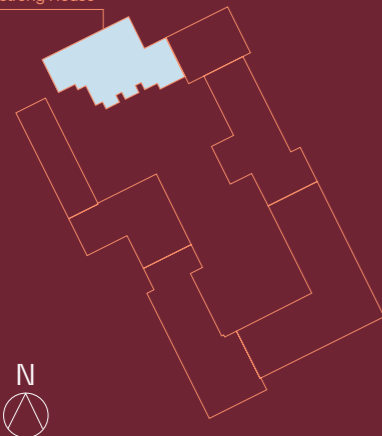
Living/Dining/Kitchen	5.33m x 4.87m	17'6" x 16'0"
Bedroom	3.40m x 3.45m	11'2" x 11'4"
Balcony	5.10m x 3.00m	16'9" x 9'10"
Total	52.4 sqm	564 sqft

Apartment A8

Living/Dining/Kitchen	5.33m x 4.87m	17'6" x 16'0"
Bedroom	3.40m x 3.45m	11'2" x 11'4"
Balcony	5.50m x 3.00m	18'1" x 9'10"
Total	52.4 sqm	564 sqft

Site Plan

Armstrong House



Level 02 Apartments A6–A8



Brush House

Levels 01 – 05

Apartments B1 – B17

01

Level 01

Apartment B1

Living/Dining/Kitchen	7.40m x 4.10m	24'3" x 13'6"
Bedroom 1	4.85m x 3.00m	15'11" x 9'10"
Bedroom 2	4.79m x 3.41m	15'8" x 11'2"
Study	3.20m x 2.50m	10'6" x 8'2"
Balcony	6.30m x 1.50m	20'8" x 4'11"
Total	91.1 sqm	981 sqft

Apartment B2

Living/Dining/Kitchen	8.75m x 3.46m	28'8" x 11'4"
Bedroom 1	4.49m x 2.99m	14'8" x 9'10"
Bedroom 2	5.00m x 2.90m	16'5" x 9'6"
Bedroom 3	5.00m x 2.39m	16'5" x 7'10"
Terrace	9.30m x 4.80m	30'6" x 15'8"
Total	88.9 sqm	957 sqft

Apartment B3

Living/Dining/Kitchen	6.60m x 5.34m	21'8" x 17'6"
Bedroom	5.34m x 3.07m	17'6" x 10'1"
Balcony	5.70m x 1.95m	18'8" x 6'5"
Total	57.7 sqm	621 sqft

02

Level 02

Apartment B4

Living/Dining/Kitchen	7.25m x 4.35m	23'9" x 14'3"
Bedroom 1	4.79m x 3.36m	15'8" x 11'0"
Bedroom 2	7.25m x 3.15m	23'9" x 10'4"
Bedroom 3	3.45m x 2.60m	11'4" x 8'6"
Balcony	6.35m x 1.65m	20'10" x 5'5"
Total	91.7 sqm	987 sqft

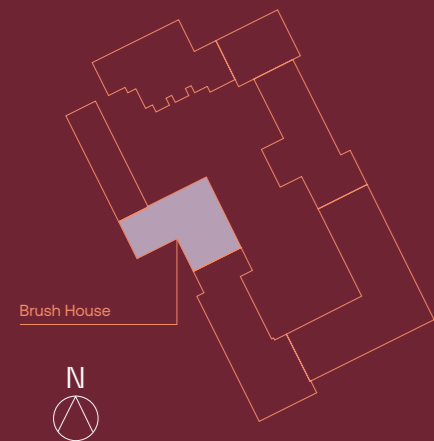
Apartment B5

Living/Dining/Kitchen	8.75m x 3.46m	28'8" x 11'4"
Bedroom 1	4.48m x 3.00m	14'8" x 9'10"
Bedroom 2	5.00m x 2.90m	16'5" x 9'6"
Bedroom 3	5.00m x 2.39m	16'5" x 7'10"
Balcony	3.38m x 1.55m	11'1" x 5'1"
Total	88.9 sqm	957 sqft

Apartment B6

Living/Dining/Kitchen	6.61m x 5.34m	21'8" x 17'6"
Bedroom	5.34m x 3.06m	17'6" x 10'1"
Balcony	3.38m x 1.55m	11'1" x 5'1"
Total	58.0 sqm	624 sqft

Site Plan



03

Level 03

Apartment B7

Living/Dining/Kitchen	6.27m x 5.86m	20'7" x 19'3"
Bedroom	4.21m x 2.64m	13'10" x 8'8"
Balcony	2.95m x 1.55m	9'8" x 5'1"
Total	50.8 sqm	547 sqft

Apartment B8

Living/Dining/Kitchen	6.61m x 5.34m	21'8" x 17'6"
Bedroom	5.34m x 3.06m	17'6" x 10'1"
Balcony	3.38m x 1.55m	11'1" x 5'1"
Total	57.6 sqm	620 sqft

Apartment B9

Living/Dining/Kitchen	5.87m x 5.71m	19'3" x 18'9"
Bedroom	4.16m x 3.31m	13'8" x 10'10"
Balcony	5.60m x 2.50m	18'4" x 8'2"
Total	51.2 sqm	551 sqft

04

Level 04

Apartment B10

Living/Dining/Kitchen	6.27m x 5.86m	20'7" x 19'3"
Bedroom	4.21m x 2.64m	13'10" x 8'8"
Balcony	2.95m x 1.55m	9'8" x 5'1"
Total	50.8 sqm	547 sqft

Apartment B11

Living/Dining/Kitchen	4.98m x 4.97m	16'4" x 16'4"
Bedroom	4.10m x 3.58m	13'5" x 11'9"
Balcony	4.85m x 1.55m	15'10" x 5'1"
Total	54.1 sqm	582 sqft

Apartment B12

Living/Dining/Kitchen	5.87m x 5.71m	19'3" x 18'9"
Bedroom	4.16m x 3.31m	13'8" x 10'10"
Balcony	2.95m x 1.55m	9'8" x 5'1"
Total	51.4 sqm	553 sqft

Apartment B13

Living/Dining/Kitchen	6.85m x 6.75m	22'6" x 22'2"
Bedroom 1	3.77m x 3.15m	12'4" x 10'4"
Bedroom 2	4.45m x 2.15m	14'7" x 7'1"
Balcony	3.40m x 1.55m	11'3" x 5'1"
Total	69.2 sqm	745 sqft

05

Level 05

Apartment B14

Living/Dining/Kitchen	6.85m x 6.75m	22'6" x 22'2"
Bedroom 1	3.77m x 3.15m	12'4" x 10'4"
Bedroom 2	4.48m x 2.15m	14'7" x 7'1"
Balcony	4.60m x 1.55m	15'1" x 5'1"
Total	69.2 sqm	745 sqft

Apartment B15

Living/Dining/Kitchen	4.98m x 4.97m	16'4" x 16'4"
Bedroom	4.10m x 3.58m	13'5" x 11'9"
Balcony	4.80m x 1.55m	15'1" x 5'1"
Total	54.1 sqm	582 sqft

Apartment B16

Living/Dining/Kitchen	5.87m x 5.71m	19'3" x 18'9"
Bedroom	4.36m x 3.31m	14'4" x 10'10"
Balcony	2.95m x 1.55m	9'8" x 5'1"
Total	51.8 sqm	555 sqft

Apartment B17

Living/Dining/Kitchen	6.27m x 5.86m	20'7" x 19'3"
Bedroom	4.21m x 2.64m	13'10" x 8'8"
Balcony	2.95m x 1.55m	9'8" x 5'1"
Total	50.8 sqm	547 sqft

Level 01

Apartments B1-B3



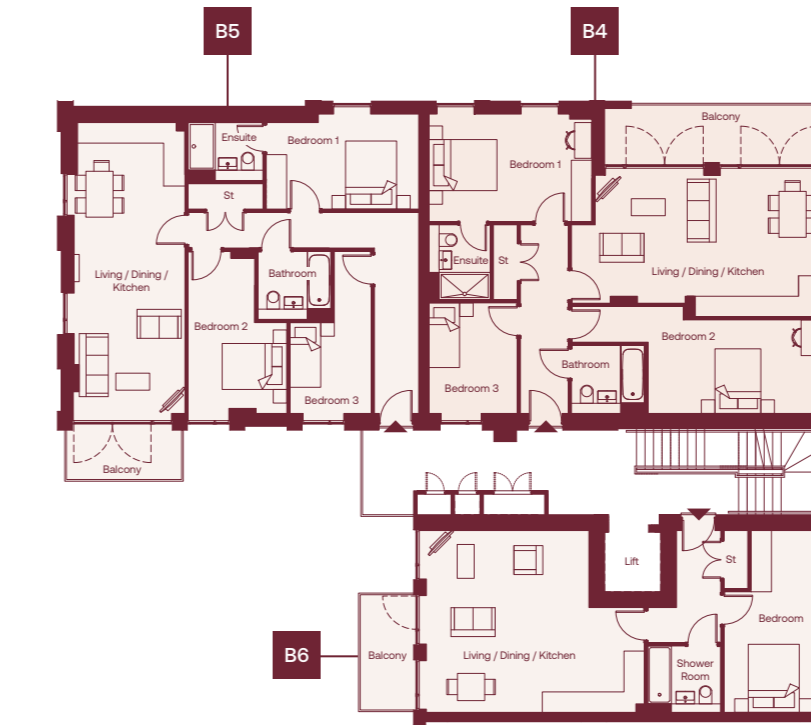
Level 04

Apartments B10-B13



Level 02

Apartments B4-B6



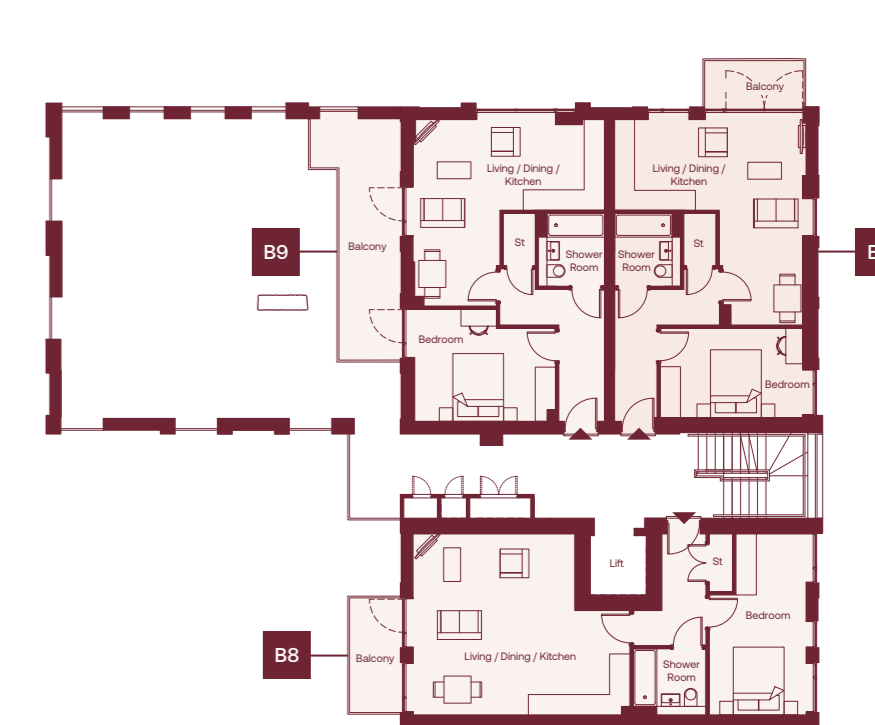
Level 05

Apartments B14-B17



Level 03

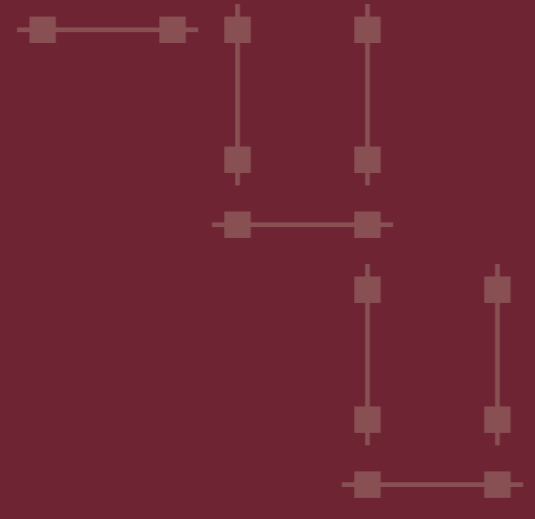
Apartments B7-B9



Clarke House

Levels 01 – 03

Apartments C1 – C6



Computer generated image – indicative only.

01

Level 01

Apartment C1

Living/Dining/Kitchen	9.41m x 3.59m	30'11" x 11'9"
Bedroom	3.60m x 3.45m	11'10" x 11'4"
Balcony	2.70m x 1.55m	8'10" x 5'1"
Total	56.9 sqm	612 sqft

Apartment C2

Living/Dining/Kitchen	7.73m x 3.14m	25'4" x 10'4"
Bedroom 1	4.09m x 3.70m	13'5" x 12'2"
Bedroom 2	4.06m x 2.67m	13'4" x 8'9"
Total	73.1 sqm	787 sqft

02

Level 02

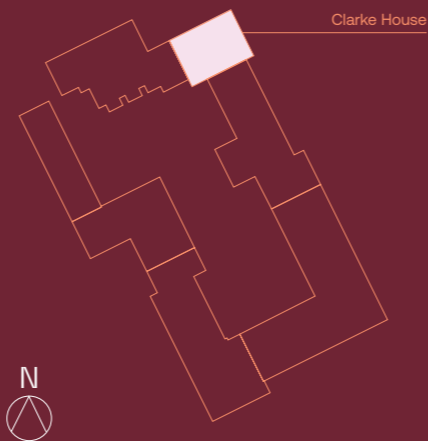
Apartment C3

Living/Dining/Kitchen	6.69m x 4.63m	21'11" x 15'2"
Bedroom	4.63m x 3.00m	15'2" x 9'10"
Balcony	9.50m x 8.70m	31'2" x 28'7"
Total	58.5 sqm	630 sqft

Apartment C4

Living/Dining/Kitchen	6.46m x 5.98m	21'2" x 19'7"
Bedroom	3.51m x 4.05m	11'6" x 13'3"
Balcony	6.60m x 1.15m	21'8" x 3'9"
Total	56.6 sqm	609 sqft

Site Plan



03

Level 03

Apartment C5

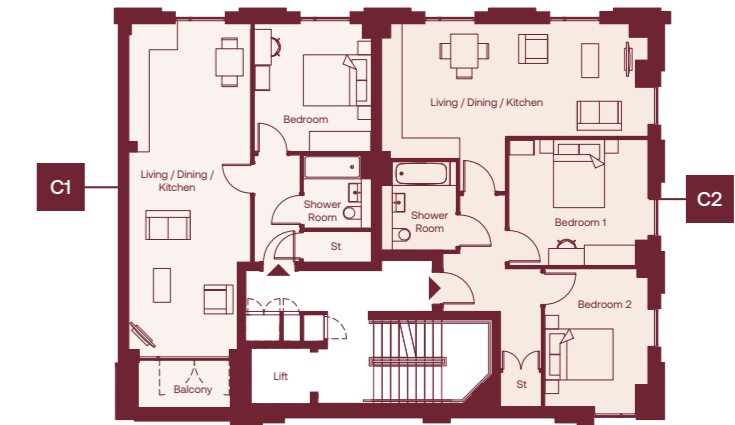
Living/Dining/Kitchen	6.69m x 4.63m	21'11" x 15'2"
Bedroom	4.63m x 3.00m	15'2" x 9'10"
Total	58.5 sqm	630 sqft

Apartment C6

Living/Dining/Kitchen	6.46m x 5.98m	21'2" x 19'7"
Bedroom	3.51m x 4.05m	11'6" x 13'3"
Total	56.6 sqm	609 sqft

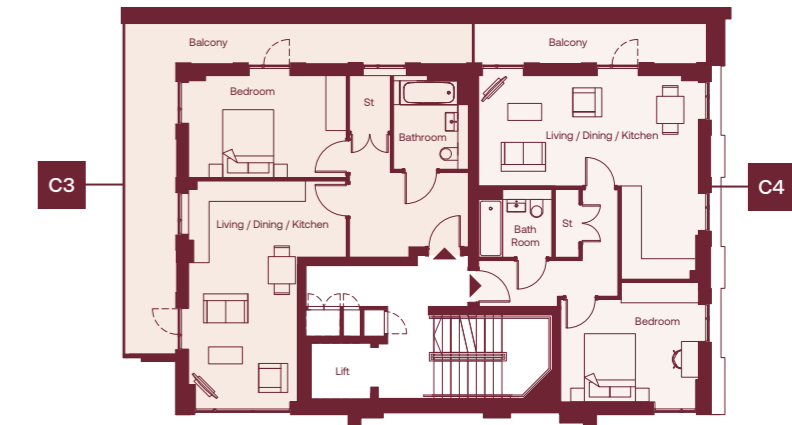
Level 01

Apartments C1–C2



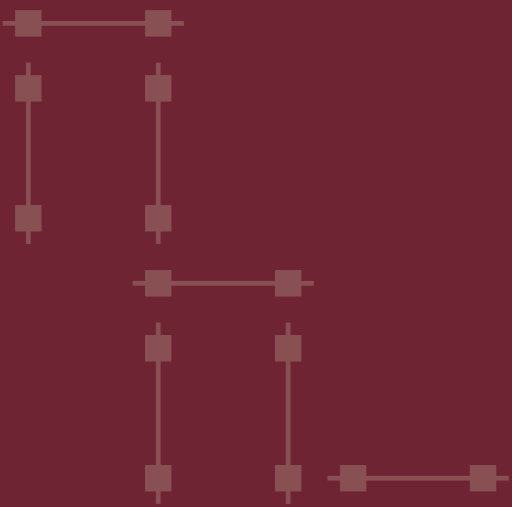
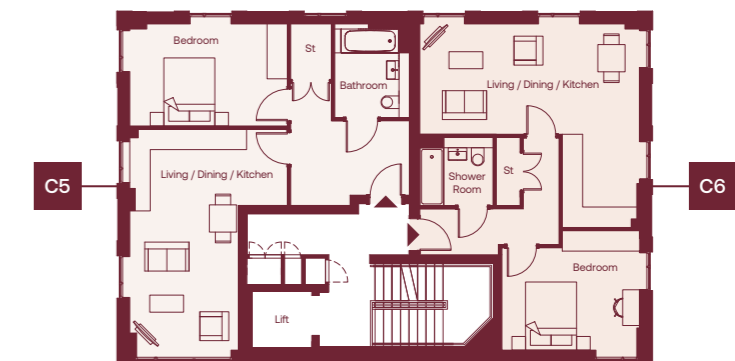
Level 02

Apartments C3–C4



Level 03

Apartments C5–C6



Duddell House

Levels 00 – 03

Apartments D1 – D13

00

Level 00 & Level 01
Duplex Apartment D1 /D2

Living/Dining/Kitchen	9.45m x 5.02m	31'0" x 16'6"
Bedroom 1	5.35m x 2.78m	17'7" x 9'1"
Bedroom 2	4.29m x 2.88m	13'10" x 9'5"
Bedroom 3	3.64m x 2.15m	11'11" x 7'1"
Garden	5.10m x 3.65m	16'9" x 12'0"
Total	94.4 sqm	1016 sqft

Duplex Apartment D3

Living/Dining/Kitchen	9.45m x 5.02m	31'0" x 16'6"
Bedroom 1	5.35m x 2.78m	17'7" x 9'1"
Bedroom 2	4.29m x 2.88m	13'10" x 9'5"
Bedroom 3	3.64m x 2.15m	11'11" x 7'1"
Garden	5.40m x 3.65m*	17'9" x 12'0"
Total	94.4 sqm	1016 sqft

*Max measurement taken.

01

Level 01
Apartment D4

Living/Dining/Kitchen	5.89m x 5.03m	19'4" x 16'6"
Bedroom 1	4.58m x 3.39m	15'0" x 11'2"
Bedroom 2	3.87m x 2.15m	12'8" x 7'1"
Balcony	8.40m x 1.75m	27'7" x 5'9"
Total	69 sqm	743 sqft

02

Level 02
Apartment D5

Living/Dining/Kitchen	6.95m x 5.34m	22'9" x 17'6"
Bedroom	5.43m x 2.75m	17'10" x 9'0"
Balcony	2.80m x 1.55m	9'2" x 5'1"
Total	58.8 sqm	633 sqft

Apartment D6

Living/Dining/Kitchen	5.58m x 4.42m	18'4" x 14'6"
Bedroom	4.16m x 2.97m	13'8" x 9'9"
Balcony	4.35m x 1.50m	14'3" x 4'11"
Total	50.6 sqm	545 sqft

Apartment D7

Living/Dining/Kitchen	5.58m x 4.27m	18'4" x 14'0"
Bedroom	4.16m x 3.05m	13'8" x 10'0"
Balcony	4.35m x 1.50m	14'3" x 4'11"
Total	51.2 sqm	551 sqft

Apartment D8 / D9

Living/Dining/Kitchen	6.95m x 3.94m	22'10" x 12'11"
Bedroom	4.50m x 3.59m	14'9" x 11'9"
Balcony	7.65m x 1.30m	25'1" x 4'3"
Total	51.2 sqm	551 sqft

03

Level 03
Apartment D10

Living/Dining/Kitchen	6.95m x 5.34m	22'9" x 17'6"
Bedroom	5.43m x 2.75m	17'10" x 9'0"
Balcony	3.00m x 1.55m	9'10" x 5'1"
Total	59.4 sqm	639 sqft

Apartment D11

Living/Dining/Kitchen	5.58m x 4.42m	18'4" x 14'6"
Bedroom	4.16m x 2.97m	13'8" x 9'9"
Balcony	4.35m x 1.50m	14'3" x 4'11"
Total	50.6 sqm	545 sqft

Apartment D12

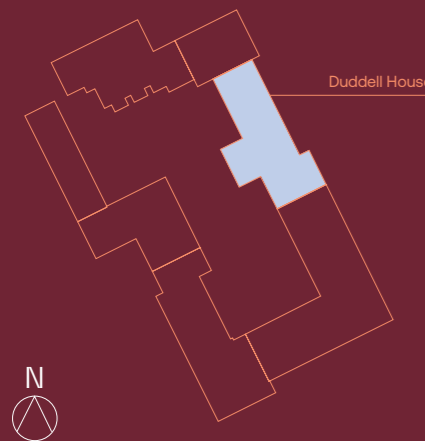
Living/Dining/Kitchen	5.58m x 4.27m	18'4" x 14'0"
Bedroom	4.16m x 3.05m	13'8" x 10'0"
Balcony	4.35m x 1.50m	14'3" x 4'11"
Total	51.2 sqm	551 sqft

04

Level 04
Apartment D13

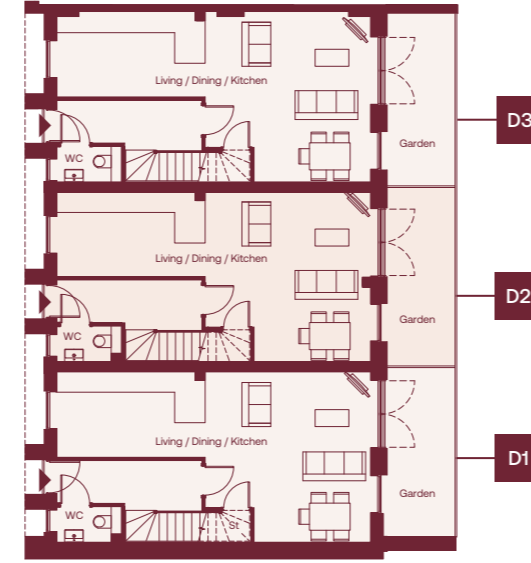
Living/Dining/Kitchen	6.95m x 5.34m	22'9" x 17'6"
Bedroom	5.43m x 2.75m	17'10" x 9'0"
Balcony	2.80m x 1.55m	9'2" x 5'1"
Total	59.4 sqm	639 sqft

Site Plan



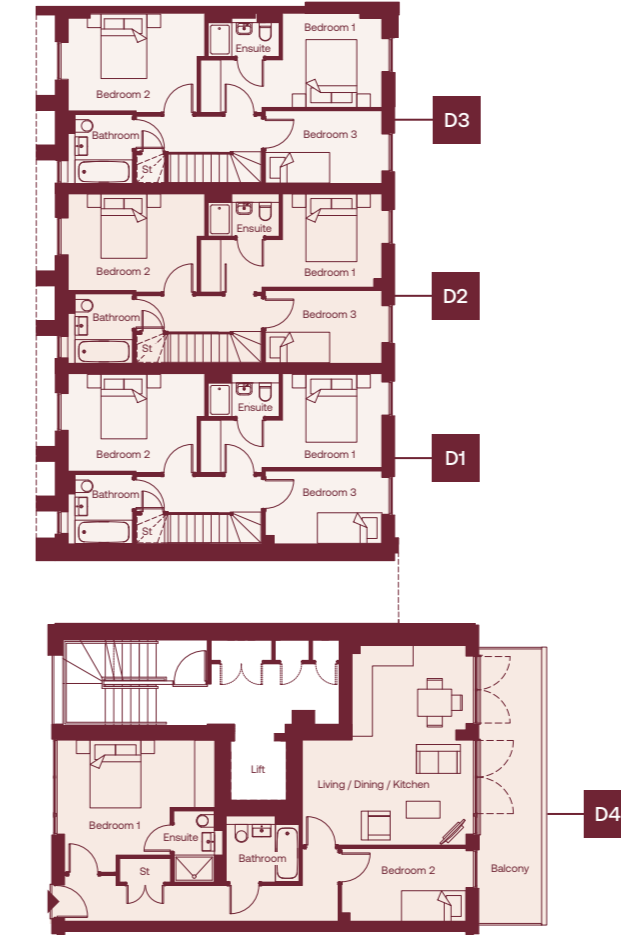
Level 00

Duplex D1-D3



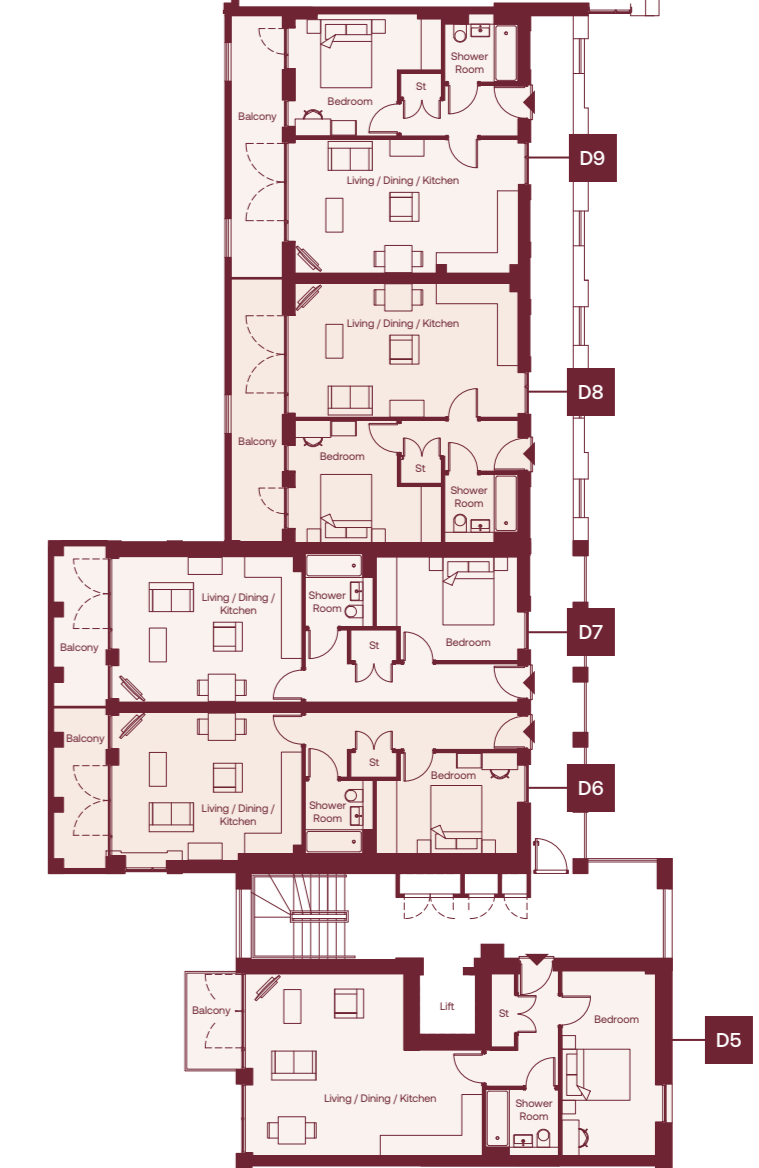
Level 01

Duplex D1-D3 / Apartment D4



Level 02

Apartments D5-D9



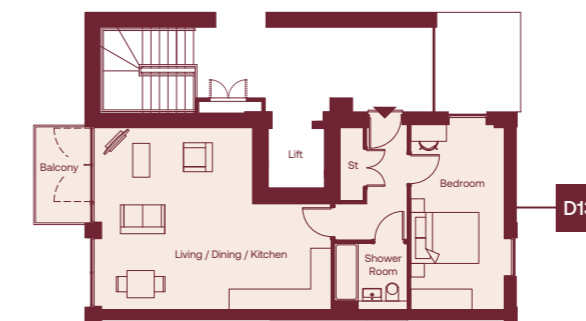
Level 03

Apartments D10-D12



Level 04

Apartments D13



Edison House

Levels 01 – 02

Apartments E1 – E18

01

Level 01

Apartment E1	6.12m x 3.26m	20'1" x 10'8"
Living/Dining/Kitchen	4.79m x 2.76m	15'9" x 9'0"
Bedroom 1	3.57m x 3.06m	11'9" x 10'0"
Bedroom 2	12.15m x 1.80m	39'10" x 5'11"
Terrace 1	6.40m x 1.80m	21'0" x 5'11"
Terrace 2	6.97 sqm	750 sqft
Total		

Apartment E2	6.10m x 3.14m	20'0" x 10'4"
Living/Dining/Kitchen	4.79m x 2.76m	15'9" x 9'0"
Bedroom 1	3.67m x 3.61m	12'1" x 11'10"
Bedroom 2	6.35m x 1.80m	20'10" x 5'11"
Terrace	70 sqm	753 sqft
Total		

Apartment E3 / E6	5.10m x 4.48m	16'9" x 14'8"
Living/Dining/Kitchen	4.41m x 3.00m	14'6" x 9'10"
Bedroom	4.45m x 1.88m	14'7" x 6'2"
Terrace	52.6 sqm	566 sqft
Total		

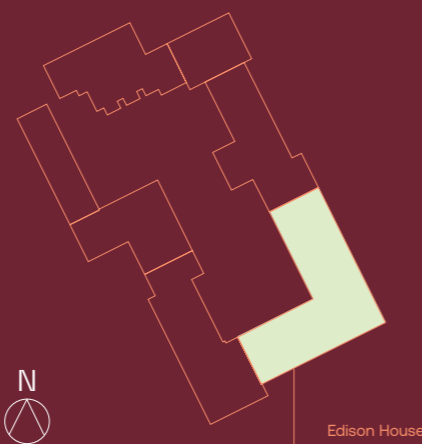
Apartment E4 / E5	5.10m x 4.48m	16'9" x 14'8"
Living/Dining/Kitchen	4.41m x 3.00m	14'6" x 9'10"
Bedroom 1	4.60m x 1.88m	15'1" x 6'2"
Terrace	52.6 sqm	566 sqft
Total		

Apartment E7	5.89m x 4.94m	19'4" x 16'2"
Living/Dining/Kitchen	4.35m x 2.89m	14'3" x 9'6"
Bedroom 1	3.20m x 2.92m	10'6" x 9'7"
Bedroom 2	3.16m x 3.06m	10'3" x 10'0"
Bedroom 3	10.40m x 1.75m	34'1" x 5'9"
Balcony	91.2 sqm	982 sqft
Total		

Apartment E8	6.04m x 5.96m	19'10" x 19'8"
Living/Dining/Kitchen	4.50m x 3.00m	14'9" x 9'10"
Bedroom 1	4.26m x 3.14m	14'0" x 10'4"
Bedroom 2	6.40m x 1.75m	21'0" x 5'9"
Balcony	75.4 sqm	812 sqft
Total		

Apartment E9	5.24m x 5.96m	17'2" x 19'8"
Living/Dining/Kitchen	4.50m x 3.00m	14'9" x 9'10"
Bedroom 1	4.30m x 2.36m	14'1" x 7'8"
Bedroom 2	5.45m x 1.75m	17'10" x 5'9"
Balcony	65.7 sqm	707 sqft
Total		

Site Plan



02

Level 02

Apartment E10	6.12m x 3.26m	20'1" x 10'8"
Living/Dining/Kitchen	4.79m x 2.76m	15'9" x 9'0"
Bedroom 1	3.57m x 3.06m	11'9" x 10'0"
Bedroom 2	6.30m x 1.65m	20'8" x 5'5"
Balcony	69.7 sqm	750 sqft
Total		

Apartment E11	6.10m x 3.14m	20'0" x 10'4"
Living/Dining/Kitchen	4.79m x 2.76m	15'9" x 9'0"
Bedroom 1	3.67m x 3.61m	12'1" x 11'10"
Bedroom 2	6.30m x 1.65m	20'8" x 5'5"
Balcony	70.0 sqm	753 sqft
Total		

Apartment E12 / E13 / E14 / E15	5.10m x 4.48m	16'9" x 14'8"
Living/Dining/Kitchen	4.41m x 3.00m	14'6" x 9'10"
Bedroom	2.70m x 1.55m	8'10" x 5'1"
Balcony	52.6 sqm	566 sqft
Total		

Apartment E16	7.02m x 4.63m	23'0" x 15'2"
Living/Dining/Kitchen	4.50m x 3.13m	14'9" x 10'3"
Bedroom	2.80m x 1.55m	9'2" x 5'1"
Balcony	61.4 sqm	661 sqft
Total		

Apartment E17	8.77m x 3.16m	28'9" x 10'5"
Living/Dining/Kitchen	4.39m x 2.76m	14'5" x 9'0"
Bedroom	2.80m x 1.55m	9'2" x 5'1"
Balcony	52.6 sqm	566 sqft
Total		

Apartment E18	7.60m x 4.24m	24'11" x 13'11"
Living/Dining/Kitchen	5.43m x 2.76m	17'10" x 9'0"
Bedroom 1	3.50m x 2.33m	11'6" x 7'8"
Bedroom 2	2.80m x 1.55m	9'2" x 5'1"
Balcony	65.5 sqm	706 sqft
Total		

Level 01

Apartments E1-E9



Level 02

Apartments E10-E18



Computer generated image – indicative only.

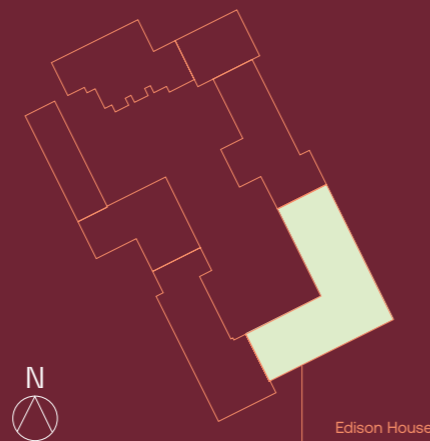
Edison House

Levels 03 – 05
Apartments E19 – E40

03

Level 03			
Apartment E19			
Living/Dining/Kitchen	6.12m x 3.26m	20'1" x 10'8"	
Bedroom 1	4.79m x 2.76m	15'9" x 9'0"	
Bedroom 2	3.57m x 3.06m	11'9" x 10'0"	
Balcony	6.30m x 1.65m	20'8" x 5'4"	
Total	69.7 sqm	760 sqft	
Apartment E20			
Living/Dining/Kitchen	6.10m x 3.14m	20'0" x 10'4"	
Bedroom 1	4.79m x 2.76m	15'9" x 9'0"	
Bedroom 2	3.67m x 3.61m	12'1" x 11'0"	
Balcony	6.30m x 1.65m	20'8" x 5'4"	
Total	70 sqm	753 sqft	
Apartment E21 / E22 / E23 / E24			
Living/Dining/Kitchen	5.10m x 4.48m	16'9" x 14'8"	
Bedroom 1	4.41m x 3.00m	14'6" x 9'10"	
Balcony	2.70m x 1.55m	8'10" x 5'1"	
Total	52.6 sqm	566 sqft	
Apartment E25			
Living/Dining/Kitchen	7.02m x 4.63m	23'0" x 15'2"	
Bedroom	4.50m x 3.13m	14'9" x 10'3"	
Balcony	2.88m x 1.55m	9'5" x 5'1"	
Total	61.4 sqm	661 sqft	
Apartment E26			
Living/Dining/Kitchen	8.77m x 3.16m	28'9" x 10'5"	
Bedroom	4.39m x 2.76m	14'5" x 9'0"	
Balcony	2.88m x 1.55m	9'5" x 5'1"	
Total	52.6 sqm	566 sqft	
Apartment E27			
Living/Dining/Kitchen	7.60m x 4.24m	24'11" x 13'11"	
Bedroom 1	4.24m x 2.76m	13'11" x 9'0"	
Bedroom 2	3.50m x 2.33m	11'6" x 7'8"	
Balcony	2.95m x 1.55m	9'8" x 5'1"	
Total	65.6 sqm	706 sqft	

Site Plan



04

Level 04			
Apartment E28			
Living/Dining/Kitchen	6.12m x 3.26m	20'1" x 10'8"	
Bedroom 1	4.79m x 2.76m	15'9" x 9'0"	
Bedroom 2	3.57m x 3.06m	11'9" x 10'0"	
Balcony	6.30m x 1.65m	20'8" x 5'4"	
Total	69.7 sqm	750 sqft	
Apartment E29			
Living/Dining/Kitchen	6.10m x 3.14m	20'0" x 10'4"	
Bedroom 1	4.79m x 2.76m	15'9" x 9'0"	
Bedroom 2	3.67m x 3.61m	12'1" x 11'0"	
Balcony	6.30m x 1.65m	20'8" x 5'4"	
Total	70 sqm	753 sqft	
Apartment E30 / E31 / E32 / E33			
Living/Dining/Kitchen	5.10m x 4.48m	16'9" x 14'8"	
Bedroom	4.41m x 3.00m	14'6" x 9'10"	
Balcony	2.70m x 1.55m	8'10" x 5'1"	
Total	52.6 sqm	566 sqft	
Apartment E34			
Living/Dining/Kitchen	7.60m x 4.24m	24'11" x 13'11"	
Bedroom 1	4.24m x 2.76m	13'11" x 9'0"	
Bedroom 2	3.50m x 2.33m	11'6" x 7'8"	
Balcony	2.80m x 1.55m	9'2" x 5'1"	
Total	65.6 sqm	706 sqft	
Level 05			
Apartment E35			
Living/Dining/Kitchen	6.12m x 3.26m	20'1" x 10'8"	
Bedroom 1	4.79m x 2.76m	15'9" x 9'0"	
Bedroom 2	3.57m x 3.06m	11'9" x 10'0"	
Balcony	6.30m x 1.65m	20'8" x 5'4"	
Total	69.7 sqm	750 sqft	
Apartment E36			
Living/Dining/Kitchen	6.10m x 3.14m	20'0" x 10'4"	
Bedroom 1	4.79m x 2.76m	15'9" x 9'0"	
Bedroom 2	3.67m x 3.61m	12'1" x 11'0"	
Balcony	6.30m x 1.65m	20'8" x 5'4"	
Total	70 sqm	753 sqft	
Apartment E37 / E38 / E39 / E40			
Living/Dining/Kitchen	5.10m x 4.48m	16'9" x 14'8"	
Bedroom	4.41m x 3.00m	14'6" x 9'10"	
Balcony	2.70m x 1.55m	8'10" x 5'1"	
Total	52.6 sqm	566 sqft	

Level 03 Apartments E19-E27



Level 04 Apartments E28-E34



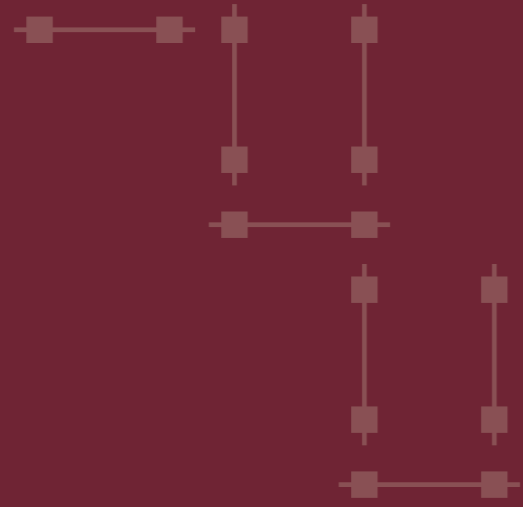
Level 05 Apartments E35-E40



Computer generated image – indicative only.

Faraday House

Levels 01 - 03
Apartments F1 - F18



01

Level 01			
Apartment F1			
Living/Dining/Kitchen	9.66m x 3.27m	31'8" x 10'9"	
Bedroom	5.82m x 2.75m	19'1" x 9'0"	
Terrace	6.30m x 1.62m	20'8" x 5'3"	
Total	61.7 sqm	664 sqft	
Apartment F2 / F3			
Living/Dining/Kitchen	5.92m x 3.88m	19'5" x 12'9"	
Bedroom 1	4.67m x 2.90m	15'4" x 9'6"	
Bedroom 2	4.07m x 2.14m	13'4" x 7'0"	
Terrace	6.30m x 1.62m	20'8" x 5'3"	
Total	64.1 sqm	690 sqft	
Apartment F4			
Living/Dining/Kitchen	7.17m x 3.29m	23'6" x 10'9"	
Bedroom 1	4.14m x 3.00m	13'7" x 9'10"	
Bedroom 2	4.03m x 2.06m	13'3" x 6'9"	
Terrace	5.36m x 1.95m	17'7" x 6'5"	
Total	64.3 sqm	692 sqft	
Apartment F5			
Living/Dining/Kitchen	7.27m x 6.02m	23'10" x 19'9"	
Bedroom	4.82m x 3.09m	15'10" x 10'2"	
Terrace	6.30m x 1.62m	20'8" x 5'4"	
Total	63.7 sqm	686 sqft	
Apartment F6			
Living/Dining/Kitchen	6.02m x 5.84m	19'9" x 19'2"	
Bedroom 1	4.83m x 3.00m	15'10" x 9'10"	
Bedroom 2	4.83m x 2.90m	15'10" x 9'6"	
Bedroom 3	4.83m x 2.17m	15'10" x 7'2"	
Terrace	6.30m x 1.62m	20'8" x 5'4"	
Total	89.1 sqm	959 sqft	

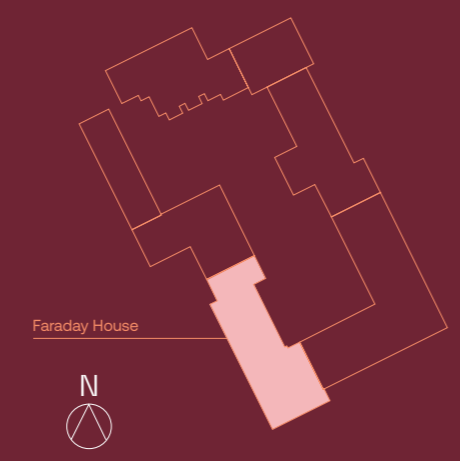
02

Level 02			
Apartment F7 / F8 / F9			
Living/Dining/Kitchen	8.66m x 3.27m	28'5" x 10'9"	
Bedroom	4.44m x 2.75m	14'7" x 9'0"	
Balcony	5.90m x 1.50m	19'4" x 4'11"	
Total	53.3 sqm	574 sqft	
Apartment F10			
Living/Dining/Kitchen	7.17m x 3.43m	23'6" x 11'3"	
Bedroom 1	4.14m x 3.00m	13'7" x 9'10"	
Bedroom 2	3.98m x 2.07m	13'1" x 6'9"	
Balcony	3.38m x 1.55m	11'1" x 5'1"	
Total	64.4 sqm	693 sqft	
Apartment F11			
Living/Dining/Kitchen	8.66m x 3.27m	28'5" x 10'9"	
Bedroom	4.44m x 2.75m	14'7" x 9'0"	
Balcony	5.90m x 1.50m	19'4" x 4'11"	
Total	53.3 sqm	574 sqft	
Apartment F12			
Living/Dining/Kitchen	6.02m x 4.77m	19'9" x 15'8"	
Bedroom 1	4.91m x 3.12m	16'1" x 10'3"	
Bedroom 2	4.91m x 2.17m	16'1" x 7'2"	
Bedroom 3	4.91m x 2.17m	16'1" x 7'2"	
Balcony	5.90m x 1.50m	19'4" x 4'11"	
Total	77.4 sqm	833 sqft	

03

Level 03			
Apartment F13 / F14 / F15			
Living/Dining/Kitchen	8.66m x 3.27m	28'5" x 10'9"	
Bedroom	4.44m x 2.75m	14'7" x 9'0"	
Balcony	5.90m x 1.50m	19'4" x 4'11"	
Total	53.3 sqm	574 sqft	
Apartment F16			
Living/Dining/Kitchen	7.17m x 3.43m	23'6" x 11'3"	
Bedroom 1	4.14m x 3.00m	13'7" x 9'10"	
Bedroom 2	3.98m x 2.07m	13'1" x 6'9"	
Balcony	3.38m x 1.55m	11'1" x 5'1"	
Total	64.4 sqm	693 sqft	
Apartment F17			
Living/Dining/Kitchen	8.66m x 3.27m	28'5" x 10'9"	
Bedroom	4.44m x 2.75m	14'7" x 9'0"	
Balcony	5.90m x 1.50m	19'4" x 4'11"	
Total	53.3 sqm	574 sqft	
Apartment F18			
Living/Dining/Kitchen	6.02m x 4.77m	19'9" x 15'8"	
Bedroom 1	4.91m x 3.12m	16'1" x 10'3"	
Bedroom 2	4.91m x 2.17m	16'1" x 7'2"	
Bedroom 3	4.91m x 2.17m	16'1" x 7'2"	
Balcony	5.90m x 1.50m	19'4" x 4'11"	
Total	77.4 sqm	833 sqft	

Site Plan

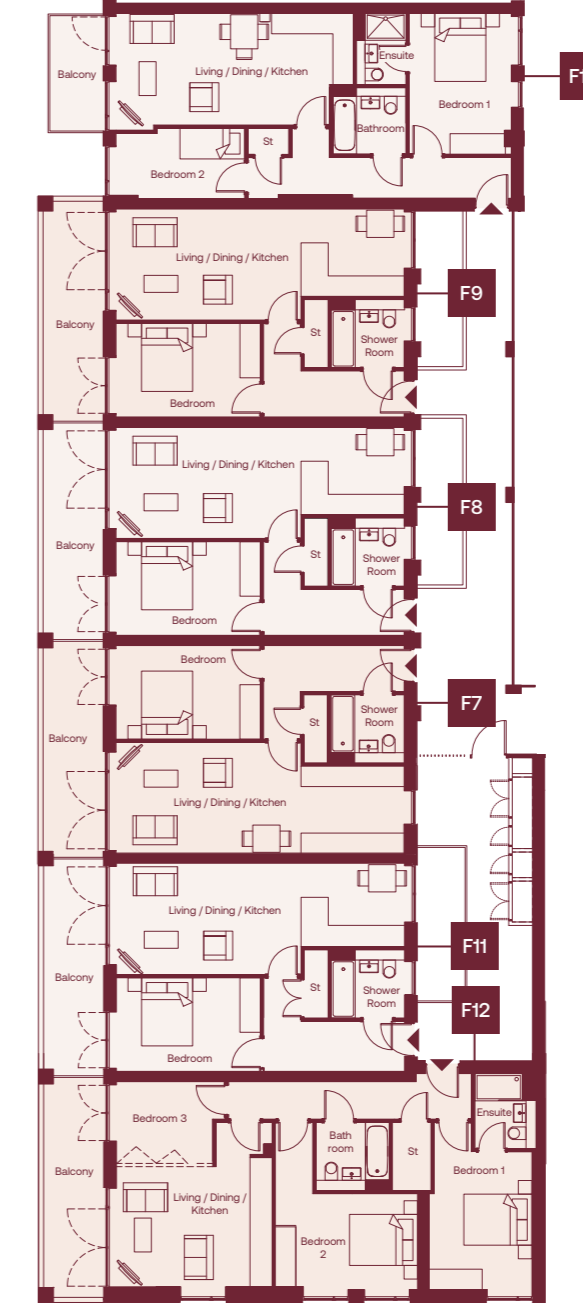


Computer generated image - indicative only.

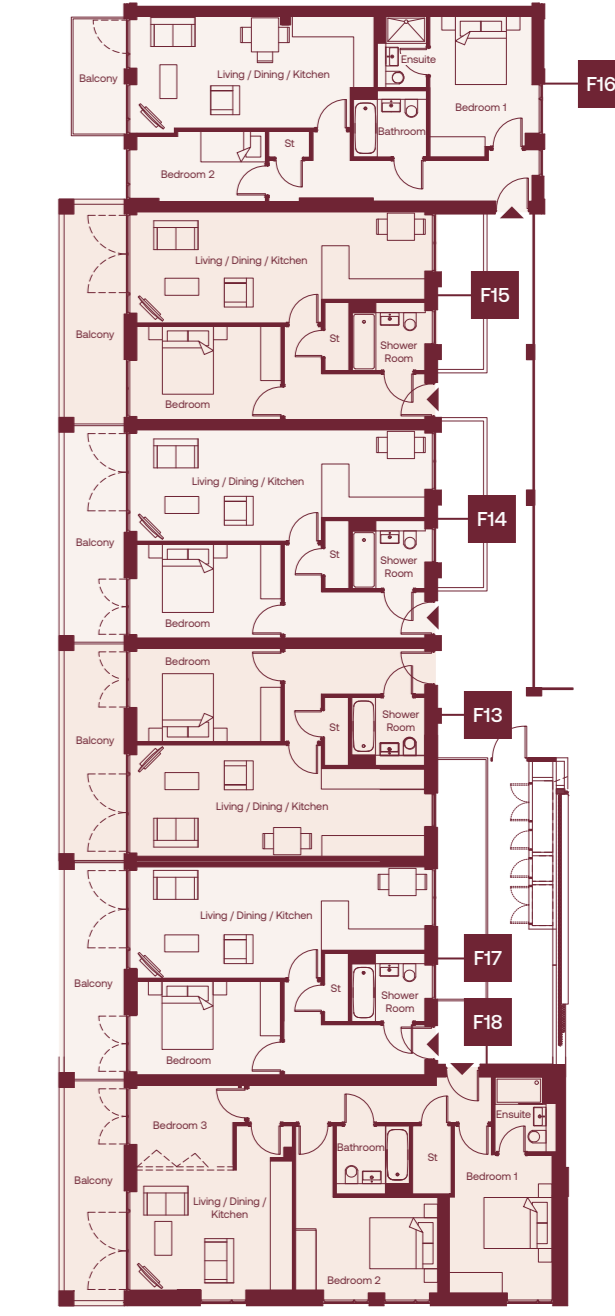
Block F / Level 01 Apartments F1-F6



Block F / Level 02 Apartments F7-F12



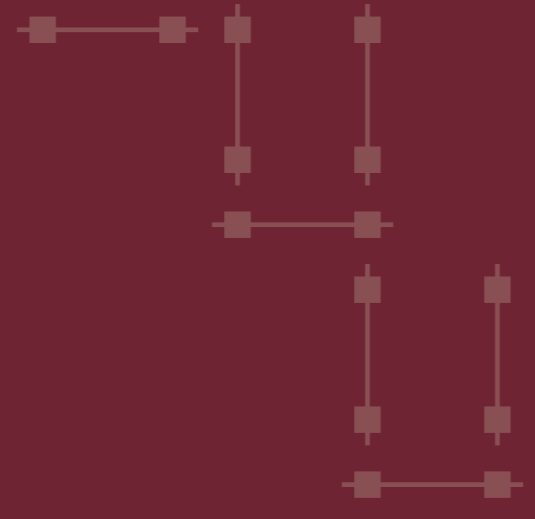
Block F / Level 03 Apartments F13-F18



Goode House

Levels 00 – 03

Houses G1 – G3



Levels 00-03		
House G1 / G2		
Living/Dining/Kitchen	6.78m x 5.60m	22'3" x 18'4"
Terrace	6.80m x 5.50m	22'4" x 18'1"
Bedroom 1	4.53m x 3.56m	14'11" x 11'8"
Bedroom 2	4.52m x 3.06m	14'10" x 10'1"
Bedroom 3	4.10m x 2.43m	13'5" x 8'0"
Roof terrace	6.80m x 1.45m	22'4" x 4'9"
Garden	5.95m x 2.65m	19'6" x 8'8"
Total	116 sqm	1249 sqft

Levels 00-03		
House G3		
Living/Dining/Kitchen	6.78m x 5.60m	22'3" x 18'4"
Terrace	6.80m x 5.50m	22'4" x 18'1"
Bedroom 1	4.53m x 3.56m	14'11" x 11'8"
Bedroom 2	4.52m x 3.06m	14'10" x 10'1"
Bedroom 3	4.10m x 2.43m	13'5" x 8'0"
Roof terrace	6.80m x 1.45m	22'4" x 4'9"
Garden	4.45m x 1.8m	19'6" x 8'8"
Total	116 sqm	1249 sqft



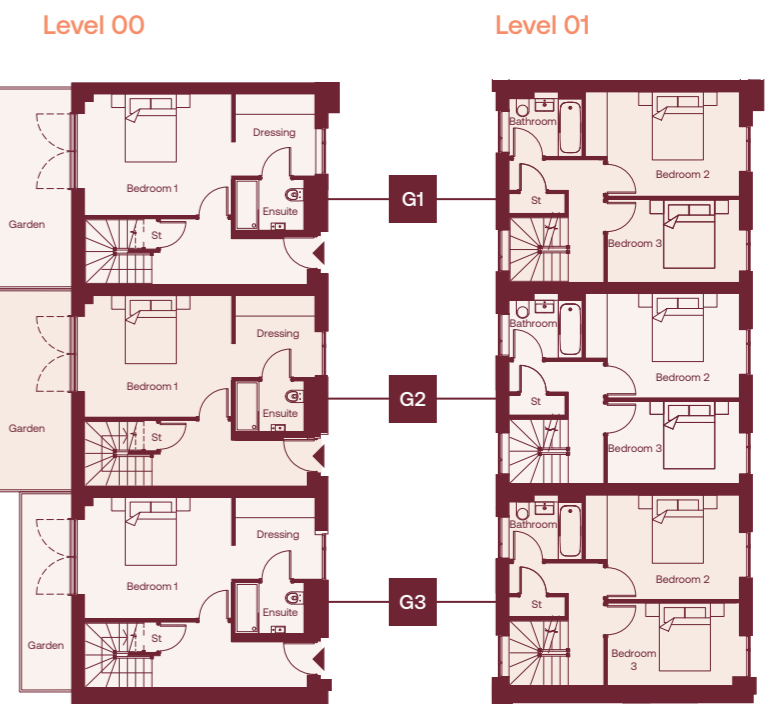
Computer generated image – indicative only.

Site Plan



Level 00 & 01

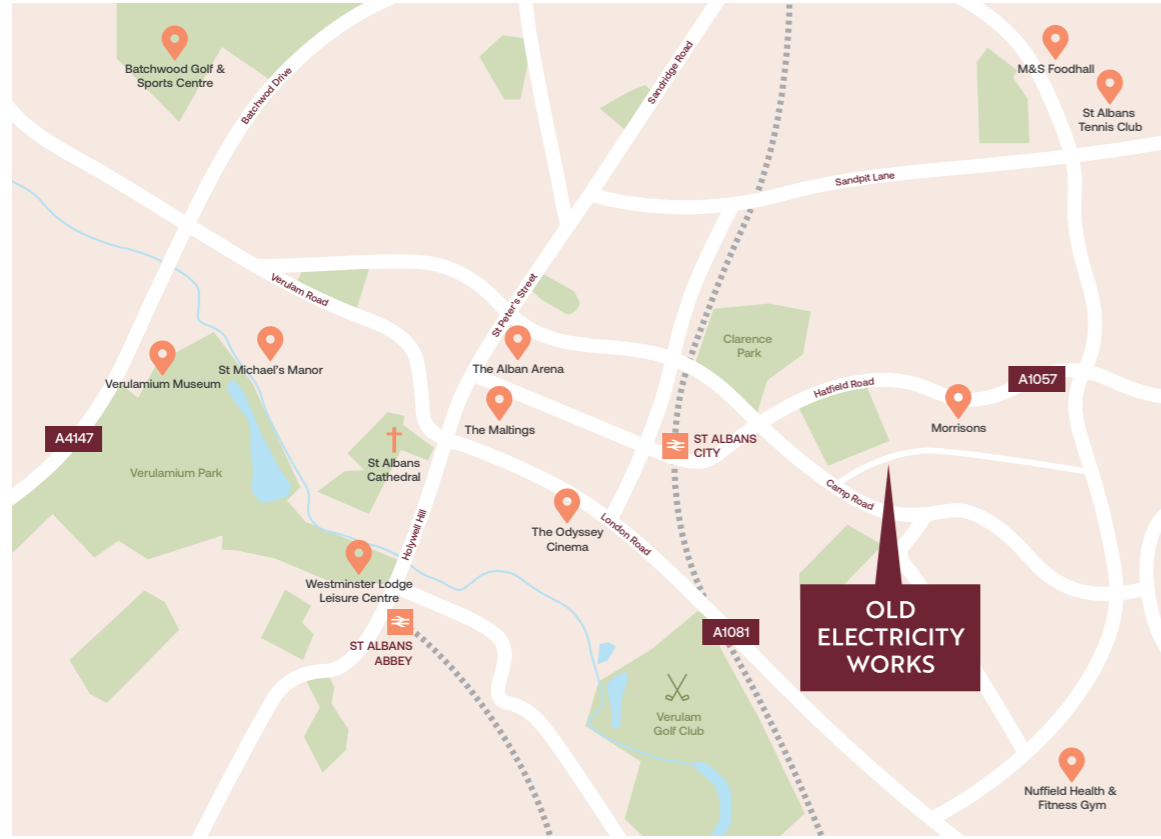
Houses G1-G3



Level 02 & 03

Houses G1-G3





Old Electricity Works
 Campfield Road
 St Albans
 Hertfordshire
 AL1 5HT

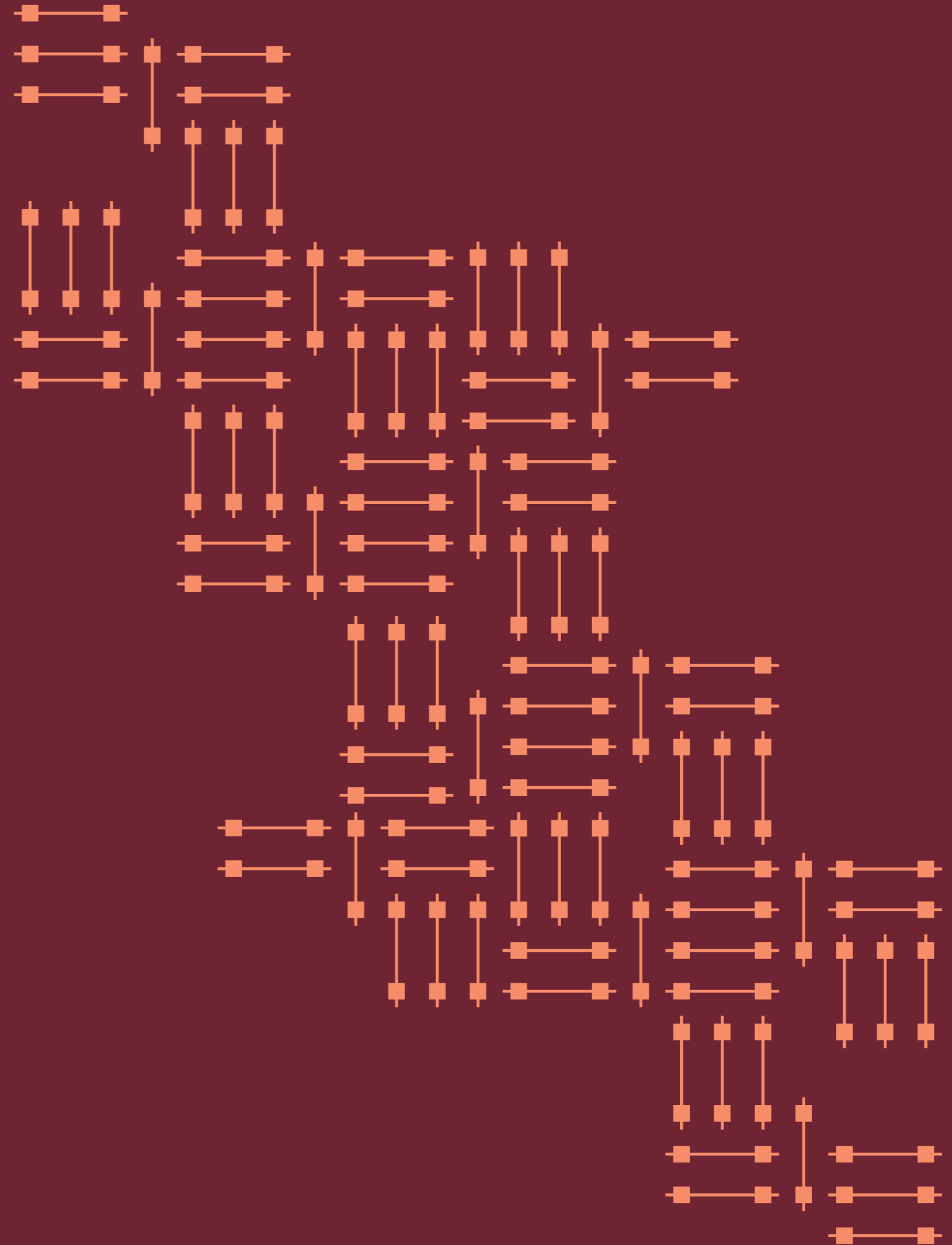


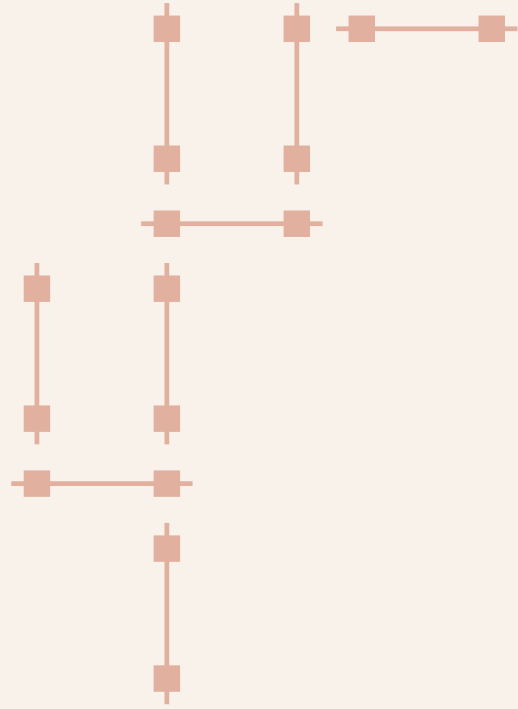
Sales enquiries

01992 940955

herts@lanesexclusivehomes.co.uk
lanesexclusivehomes.co.uk

IMPORTANT NOTICE
 Whilst every care has been taken to ensure accuracy these particulars do not constitute part of any offer or contract and the right to change plans, specifications and materials is reserved. All measurements are given as a guide only. Purchasers are advised to check plot specific dimensions and specifications prior to reservation. No liability can be accepted for any errors arising there from. Development images are indicative and may vary. Specifications for this development may not include fixtures, fittings and furnishings shown in the photographs and illustrations. Features and finishes are shown for illustrative purposes only and are not intended to form part of any contract or warranty. No responsibility is taken for any other error, omission, or mis-statements in these particulars. Neither the vendor nor its agents make or give, whether in these particulars, during the negotiations or otherwise, any representation or warranty in relation to this property. Designed by Fresh Lemon.





 James Taylor Homes

