



Plot 6, The Tamworth, Granary & Chapel Tamworth £799,950



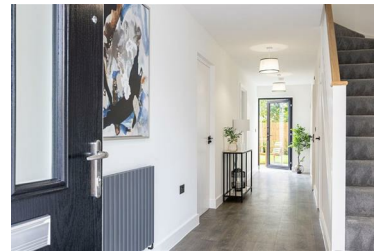
SHOW HOME AVAILABLE TO VIEW!

Plot 6, The Tamworth - a spectacularly modern 4 bedroom home offering spacious accommodation with garage and driveway.

Welcome to Granary & Chapel by Durkan Homes, a superior and modern development consisting of urban-style 1 & 2 bedroom apartments and 3 & 4 bedroom houses situated within the idyllic market town of Hertford. Each home has been thoughtfully designed to provide luxurious living with bright open spaces and high-end specification finishes throughout.

Enjoy everything Hertford has to offer, renowned for its charming and affluent historic town, which plays host to a twice weekly street market along with

- The Tamworth house type, a wonderful and well-designed 1,767 sq.ft. 4 • Garage and driveway parking bedroom home
- ASSISTED MOVE SCHEME AVAILABLE! *
- High specification finishes throughout
- Walking distance to both Hertford East and Hertford North Train Stations offering easy access to the city
- SHOW HOME AVAILABLE TO VIEW!
- Contemporary urban-style architecture inspired by the industrial heritage of the site
- Close proximity to a number of highly regarded schools



2 Market Street, Hertford, Hertfordshire, SG14 1BD
T | 01992 940955

info@lanesexclusivehomes.co.uk | lanesexclusivehomes.co.uk