



Oak Cottage  
Willows Green | Chelmsford | Essex | CM3 1QB



# KEY FEATURES

## Oak Cottage

Three bedroom cottage with a Well and an abundance of high quality living space, including a vaulted garden room with bifold doors leading out to the rear garden and log burner located in this popular and accessible hamlet.

Step inside Oak Cottage through the front door into the welcoming entrance hallway with Suffolk White brick flooring, underfloor heating and exposed brick and beamed walls with doors leading to both the breakfast room and the dining room with lead windows and feature brick fireplace. The breakfast room which can also work perfectly as a downstairs 4th bedroom is beamed and has windows to both sides and a front aspect. Leading from the dining room is the sitting room which has a central cast iron fireplace and oak glazed doors which lead through to the garden room. The garden room (which benefits from under floor heating) has a stunning solid oak beamed vaulted frame with bi-folding doors which open out onto the rear terrace and garden and there is also a log burner making for an extremely cosy feel. Also on the ground floor is the kitchen with a large feature Butler sink and walk-in larder. There is a separate utility room and a ground floor shower room.

On the first floor, there are three double bedrooms all arranged from the central first floor landing and a fantastic family bathroom with underfloor heating.

Step outside and you will find the detached tandem garage. The rear garden has a paved patio terrace to the rear of the property and is majority laid to lawn with a range of shrubs and trees around the borders. To the back end of the garden is a pig sty, a turkey house and chicken coop. To the front of the cottage is a front lawn with well stocked shrub borders and planting, and a driveway.

Oak Cottage is located along a quiet country road in the small village of Willows Green, Chelmsford. The City of Chelmsford is 9.5 miles, Great Dunmow is 8.5 miles and Braintree only 5.7 miles away. All have a range of shopping, schooling and leisure facilities. Chelmsford mainline railway offers direct trains into Liverpool Street and Stratford.

The plot diagram is indicative and should not be relied upon.





























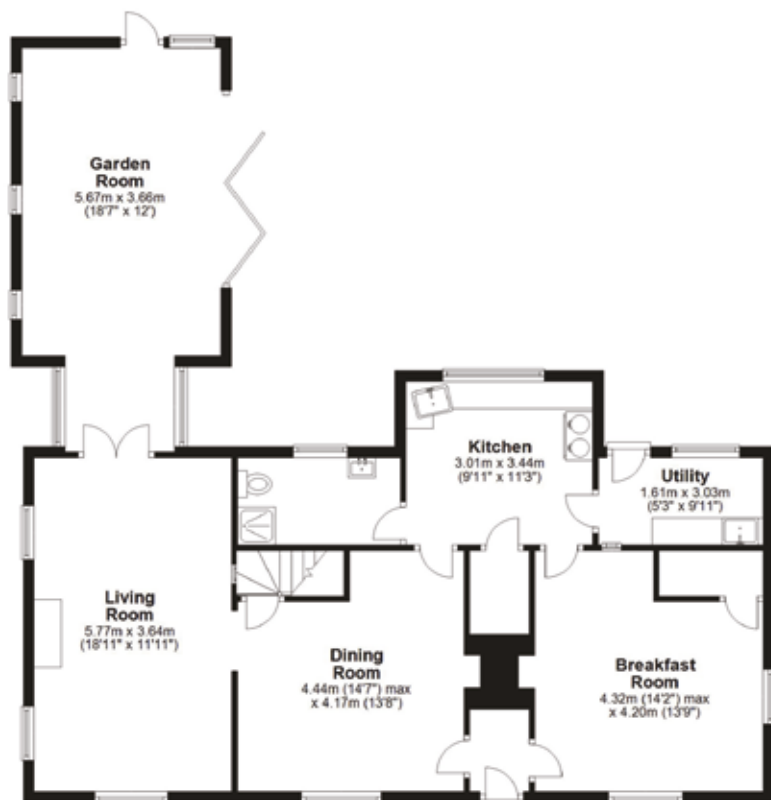




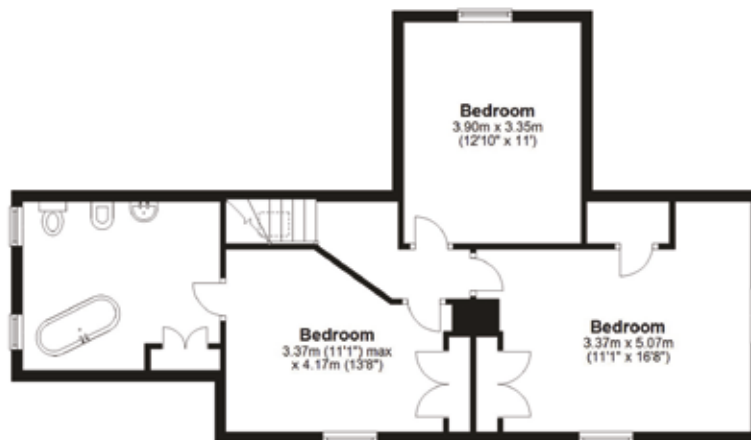




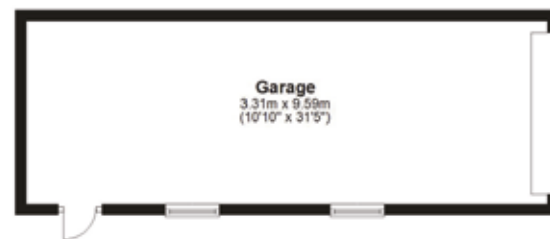
**Ground Floor**  
Approx. 108.2 sq. metres (1164.5 sq. feet)



**First Floor**  
Approx. 62.9 sq. metres (677.0 sq. feet)



**Outbuilding**  
Approx. 31.7 sq. metres (341.6 sq. feet)



**Total area: approx. 202.8 sq. metres (2183.0 sq. feet)**

FOR ILLUSTRATIVE PURPOSES ONLY. NOT TO SCALE

Whilst every attempt has been made to ensure the accuracy of the floor plan shown, all measurements, positioning, fixtures, features, fittings and any other data shown are an approximate interpretation for illustrative purposes only and are not to scale. No responsibility is taken for any error, omission, miss-statement or use of data shown.

Property marketing provided by [www.matthewkyle.co.uk](http://www.matthewkyle.co.uk)

EPC Exempt  
Council Tax Band: E  
Tenure: Freehold



Agents notes: All measurements are approximate and for general guidance only and whilst every attempt has been made to ensure accuracy, they must not be relied on. The fixtures, fittings and appliances referred to have not been tested and therefore no guarantee can be given that they are in working order. Internal photographs are reproduced for general information and it must not be inferred that any item shown is included with the property. For a free valuation, contact the numbers listed on the brochure. Copyright © 2023 Fine & Country Ltd. Registered in England and Wales. Company Reg No. 12293451 Registered Office: F&C Area 25 Limited, 46 Hullbridge Road, South Woodham Ferrers CM3 5NG. Printed





follow Fine & Country Mid Essex on



Fine & Country Mid Essex  
Suite A Imperial House, Cottage Place, Victoria Road, Chelmsford, Essex CM1 1NY  
Tel: +44 (0)1245 979 777 | [midessex@fineandcountry.com](mailto:midessex@fineandcountry.com)

