



MONTGREENAN
PROPERTY GROUP



2 The Crescent
Prestwick, KA9 1BQ

Offers in excess of £260,000



2 The Crescent

Prestwick, KA9 1BQ

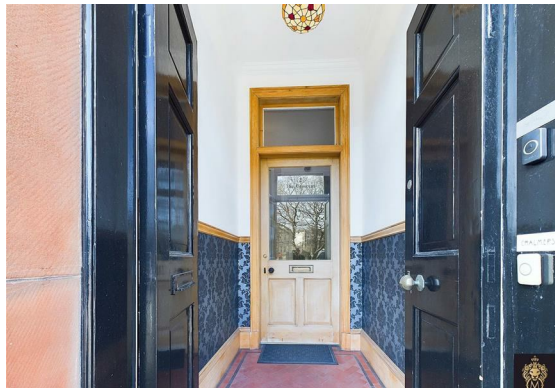
Welcome to 2 The Crescent, a rare and elegant upper conversion in the heart of Prestwick's most exclusive garden crescent. This remarkable four-bedroom residence combines period grandeur with modern refinement, offering an elevated coastal lifestyle just moments from the town's charming cafés, boutiques, and golden shoreline.

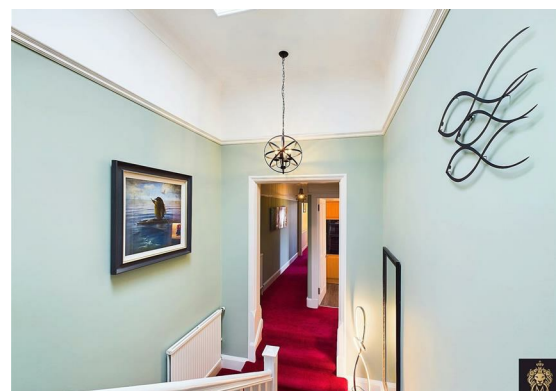
From the moment you step through the private entrance, the sense of space and sophistication is undeniable. The expansive front-facing reception room is the heart of the home, a statement in both style and comfort. Framed by a magnificent Gibson & Gould feature fireplace, intricate ceiling rose, and original cornicing, it's a room where natural light floods in, creating a warm and inviting atmosphere, perfect for both relaxed evenings and elegant entertaining.

The modern separate kitchen is designed for both form and function, with sleek cabinetry, fitted appliances, and a seamless flow that makes cooking effortless.

Four generous bedrooms offer flexible living, whether for family, guests, or a dedicated home office. One of the bathrooms is 4 piece & spacious whilst the other thoughtfully incorporates a utility room feature, adding a layer of convenience and practicality to the home.

Outside, the property benefits from a large private driveway providing secure private parking for several vehicles, a



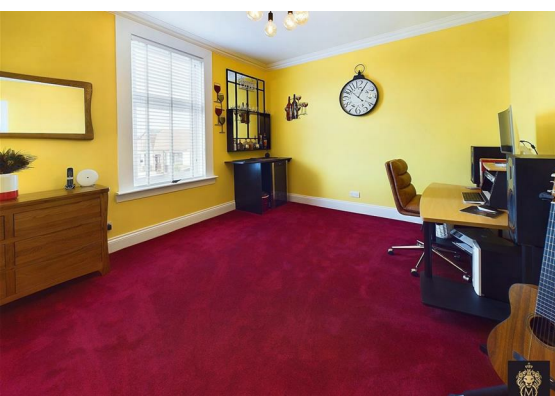


luxury rarely found in such a central location. Set within an exclusive garden crescent, the setting is peaceful and picturesque, yet just a short stroll from Prestwick's vibrant Main Street and the stunning Ayrshire coastline.

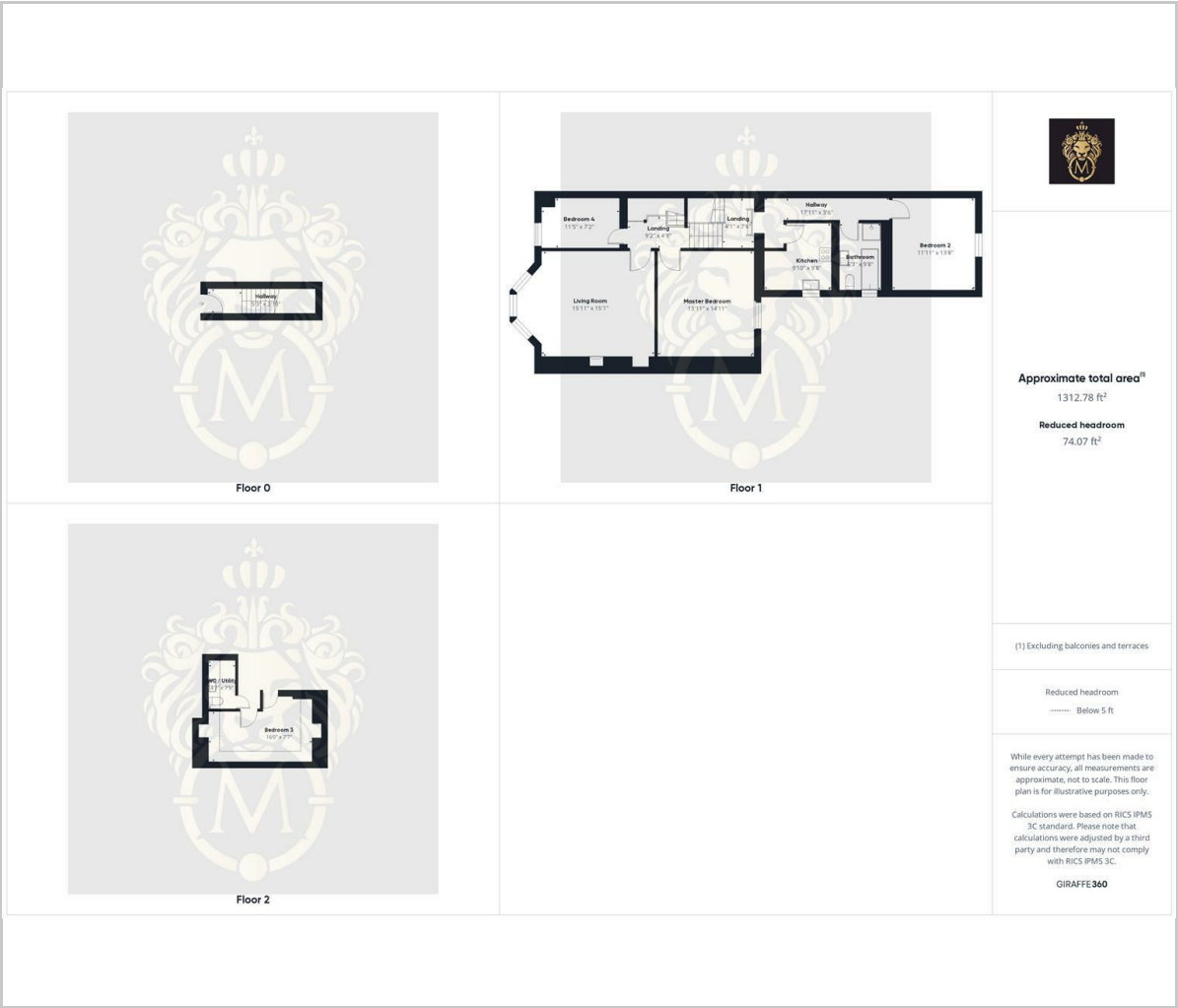
Opportunities to secure a home of this calibre in Prestwick are few and far between. This is more than a property, it's a statement in refined coastal living.

Viewings by appointment only. Contact us today to experience the lifestyle for yourself.

Home Report Value £280,000



Floor Plan

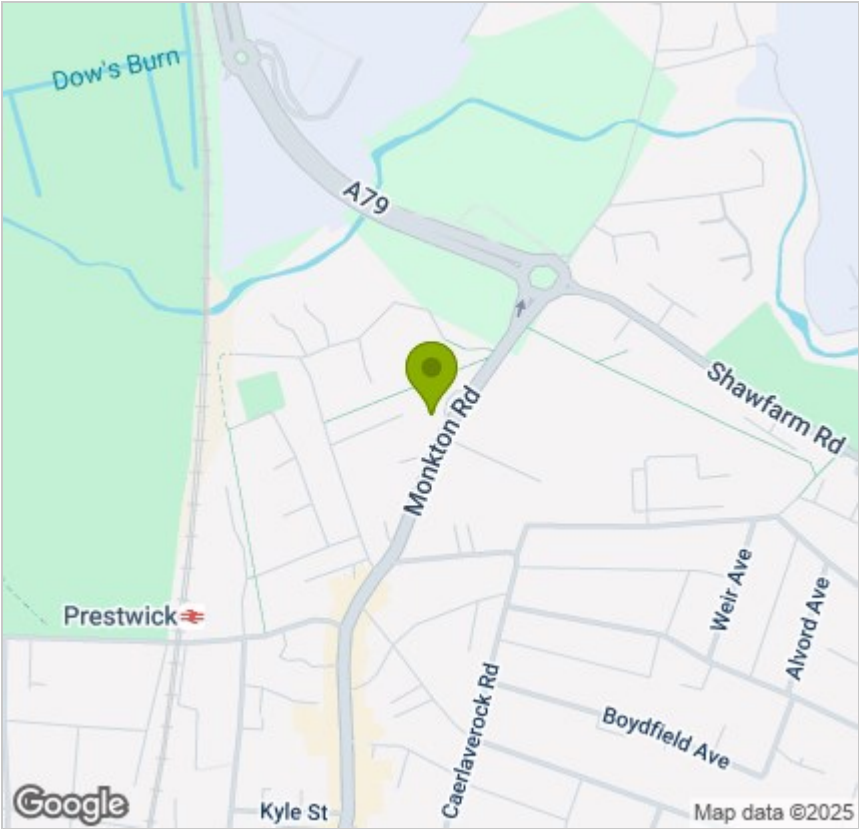


Viewing

Please contact our Montgreenan Property Group Office on 01292 435 601 if you wish to arrange a viewing appointment for this property or require further information.

These particulars, whilst believed to be accurate are set out as a general outline only for guidance and do not constitute any part of an offer or contract. Intending purchasers should not rely on them as statements of representation of fact, but must satisfy themselves by inspection or otherwise as to their accuracy. No person in this firms employment has the authority to make or give any representation or warranty in respect of the property.

Area Map



Energy Efficiency Graph

