



MONTGREENAN
PROPERTY GROUP



Flat H 5 The Laurels South Lodge Court
Ayr, KA7 2TA

Offers in excess of £90,000



Flat H 5 The Laurels South Ayr, KA7 2TA

Montgreenan Property Group are absolutely delighted to present to the market 5 H The Laurels, South Lodge Court, Racecourse Road, Ayr.

A wonderful opportunity to acquire a newly decorated, 1st floor (without lift) one bedroom retirement apartment set within the highly desirable South Lodge Court development, just off of exclusive Racecourse Road. It is worth noting that there is no age restriction on this particular building.

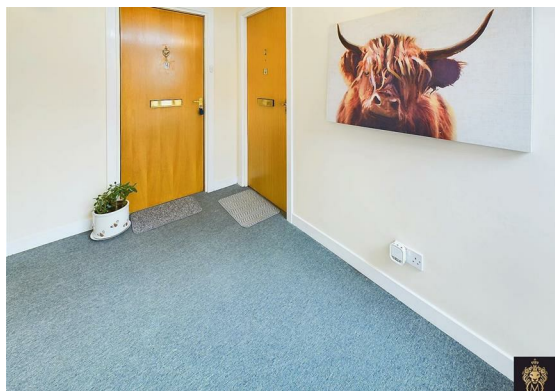
This beautiful apartment is located moments from the seafront, Old Racecourse, Belleisle & Rozelle Country Parks & Ayr town centre.

It is sure to delight a vast array of purchasers throughout the market. Particularly those downsizing who are now looking for a more manageable lateral home within a highly sought after & amenity abundant locale.

5 H The Laurels is arguably the finest positioned apartment within the whole development as it sits conveniently on the 1st floor & to the very front of the building.

Leafy outlooks & an abundance of natural light floods through it's many windows making it hard to believe you are so close to the town centre.

Accessed via a communal entrance hall with secure call entry system, the accommodation comprises; welcoming entrance hallway with useful storage cupboards off, sitting room, fitted





modern kitchen, well proportioned double bedroom & a modern shower room.

The development has private parking & is surrounded by beautifully landscaped garden grounds, featuring a harmonious blend of hard and soft landscaping. Lush lawns, well-stocked borders, mature shrubs, & trees create a serene environment perfect for relaxing & enjoying summer months.

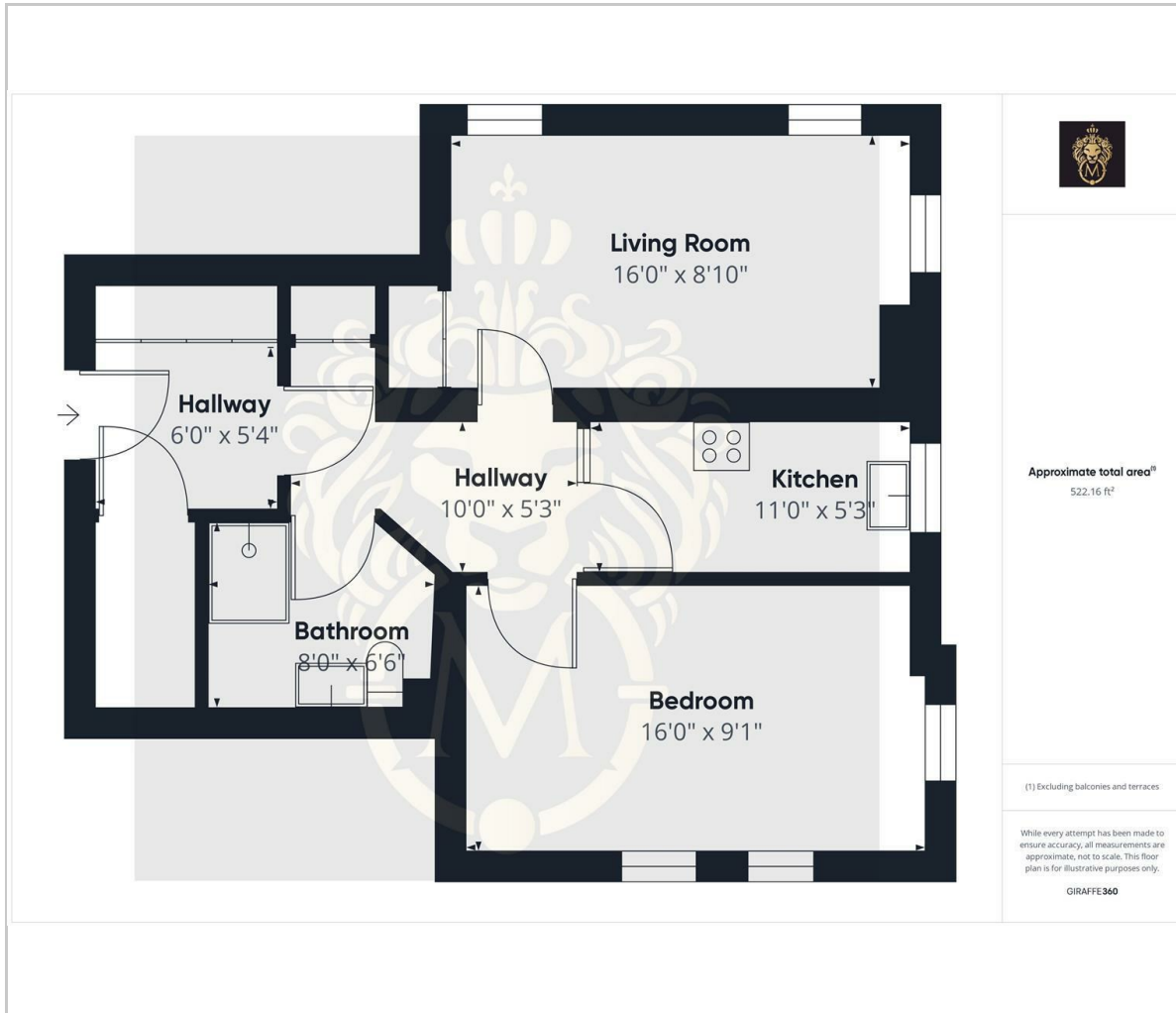
This exquisite property promises a sophisticated lifestyle in a highly desirable location.

Early viewing advised.

Home Report Value £100,000



Floor Plan

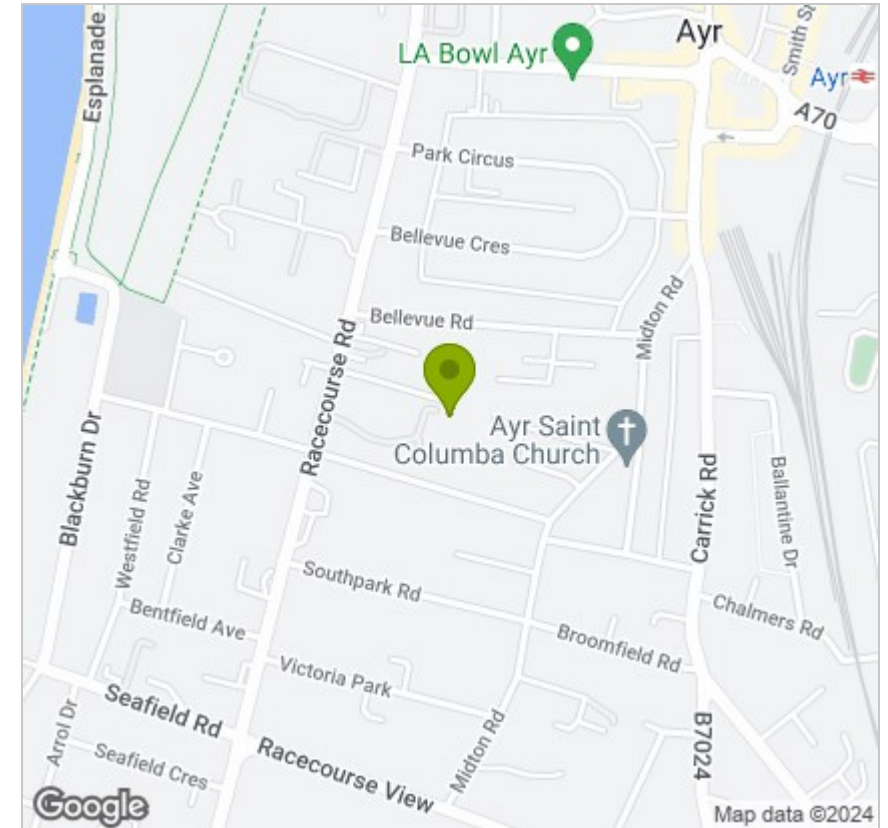


Viewing

Please contact our Montgreenan Property Group Office on 01292 435 601 if you wish to arrange a viewing appointment for this property or require further information.

These particulars, whilst believed to be accurate are set out as a general outline only for guidance and do not constitute any part of an offer or contract. Intending purchasers should not rely on them as statements of representation of fact, but must satisfy themselves by inspection or otherwise as to their accuracy. No person in this firm's employment has the authority to make or give any representation or warranty in respect of the property.

Area Map



Energy Efficiency Graph

