



9 Aspen Drive, Verwood BH31 6TE
Guide price £475,000

 3  1  2  C



9 Aspen Drive, Verwood BH31 6TE

- Large Three Bedroom Bungalow
 - Large Front & Rear Garden
 - Garage & Shed
 - NO FORWARD CHAIN
 - Close To Ringwood Forest
- Newly Fitted Stylish Kitchen With Breakfast Bar & Dining Space
 - Great Size Family Bathroom With Bath & Shower
 - Sizeable Drive With Off Road Parking For Multiple Cars
 - Quiet Cul De Sac
 - Call 01202 117288



Welcome to Aspen Drive, Verwood - a charming location perfect for those seeking tranquillity. This delightful detached bungalow offers not only a spacious 1,189 sq ft of living space but also a prime spot near the enchanting Ringwood Forest.

Step inside this lovely property to discover two inviting reception rooms, ideal for entertaining guests or simply relaxing with your loved ones. With three cosy bedrooms, there's plenty of space for the whole family to unwind and recharge.

The newly fitted stylish kitchen is a standout feature, boasting a breakfast bar, dining space, and French doors that open up to the sunny front garden - perfect for enjoying your morning coffee or hosting al fresco dinners.

Outside, a large driveway leads up to a double garage, providing ample parking space and storage options. The great-sized front garden offers a lovely setting for outdoor activities or simply basking in the sunshine.

Nestled in a quiet cul-de-sac, this property offers a peaceful retreat from the hustle and bustle of everyday life. Don't miss out on the opportunity to make this charming bungalow your new home sweet home in Verwood.



Kitchen

21'7" x 9'10" (6.6 x 3.0)

A beautifully modernised & stylish kitchen bringing a touch of luxury into the home. The kitchen is made up of gloss units with useful storage design & breakfast bar. The kitchen has French doors leading out onto a sunny aspect front garden perfect for al fresco dining.

Living Room

16'0" x 12'1" (4.9 x 3.7)

Large dual aspect living room with French doors leading out onto front garden.

Bedroom 1

15'1" x 13'5" (4.6 x 4.1)

Large master bedroom located at the back of the property looking out onto the rear garden.

Bedroom 2

15'1" x 8'10" (4.6 x 2.7)

Bedroom 3

10'5" x 8'2" (3.2 x 2.5)

Garage

17'0" x 9'2" (5.2 x 2.8)

Large garage with front and rear access from back garden.

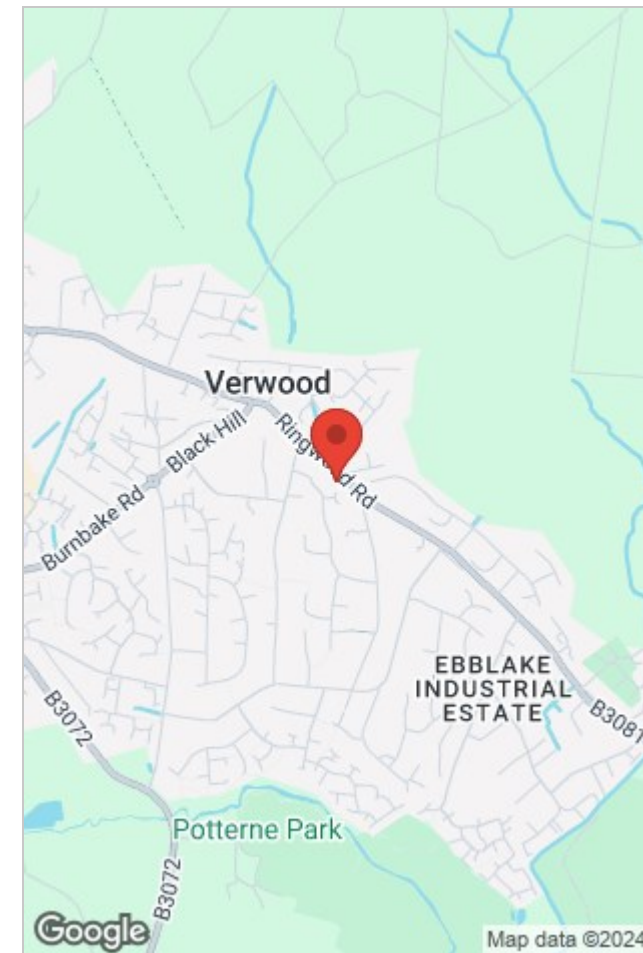
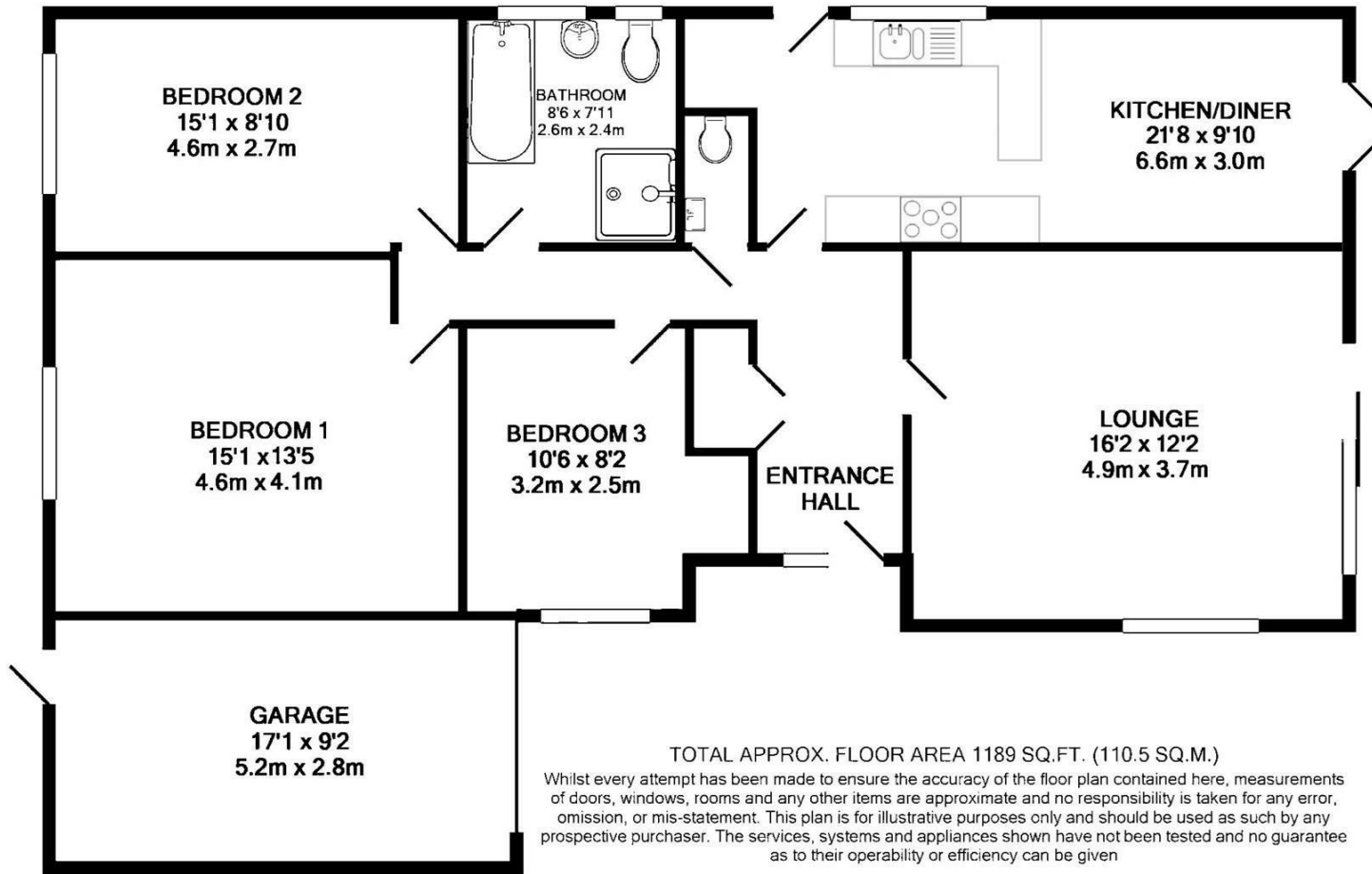
Bathroom

8'6" x 7'10" (2.6 x 2.4)

Large family bathroom with bath & shower.







Viewing

Please contact our Verwood Office on 01202 117288 if you wish to arrange a viewing appointment for this property or require further information.

The particulars are set out as a general outline only for the guidance of intended purchasers or lessees, and do not constitute, any part of a contract. Nothing in these particulars shall be deemed to be a statement that the property is in good structural condition or otherwise nor that any of the services, appliances, equipment or facilities are in good working order. Purchasers should satisfy themselves of this prior to purchasing.

