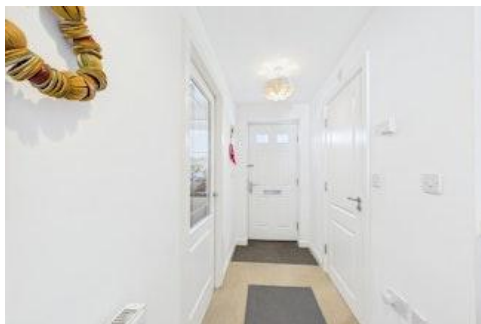




Penney Way, Titherley Park, Tadley

£1,850 PCM



 3  1  0

Council tax band: D | EPC rating: B

- Terrace House
- Living/dining room
- Family and En-suite parking

- Kitchen
- Three double bedrooms
- Garden

BELVOIR!

Property is personal

Email
tadley.lettings@belvoir.co.uk

Phone
01189 820 333

Rooms

Available from 29th May 2025 - Belvoir are pleased to offer for rent this modern, three bedroom, semi-detached town house, located in the Titherley Park development in Tadley, conveniently located for access to local shops and facilities and to AWE. Offered unfurnished and in very good decorative order in neutral colour, this bright and spacious property benefits from gas central heating and upvc double glazing throughout. An allocated parking space is located immediately in front of the property with visitor spaces nearby.

Viewing are highly recommended.

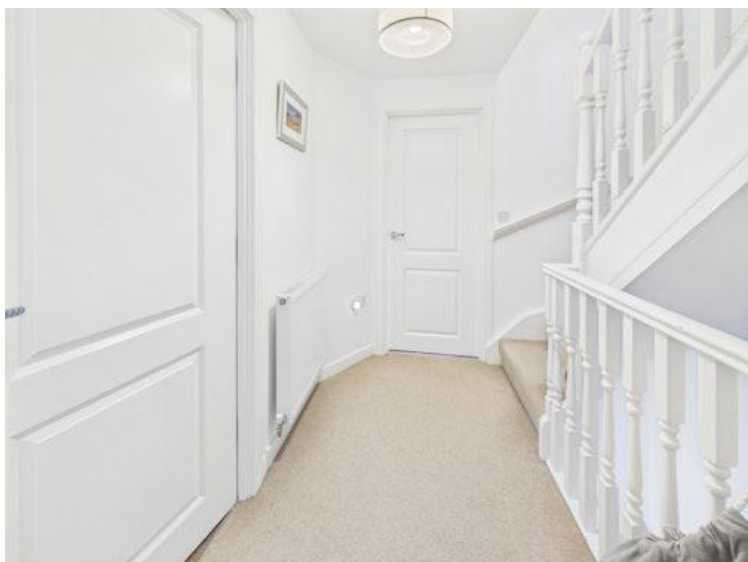
Accommodation is over three storeys.

Ground floor accommodation comprises an entrance hallway with downstairs cloakroom off and stairs to upper floors. Kitchen with vinyl floor covering, gas hob with extractor over, electric oven, built-in fridge/freezer, washer/dryer and dishwasher, and a good amount of cupboard and drawer space. Bright and airy open plan carpeted lounge/ dining area, tv and telephone points, understairs cupboard, French doors to rear garden. 1st floor accommodation comprises a front facing double bedroom with carpeted floor. Central bathroom with vinyl floor covering, white suite with shower over the bath and tiled bath surround. Rear facing double bedroom with carpeted floor. Upper floor accommodation comprises a double bedroom with carpeted floor, built-in double wardrobe, separate airing cupboard. En-suite shower room with white suite.

Rear garden is fully enclosed, part lawn, part patio and comes with a garden shed and rear gate access.

Please note that all viewers attend property viewings at their own risk and must assess any hazards themselves.

Photographs



More photographs



Floorplan



Map

