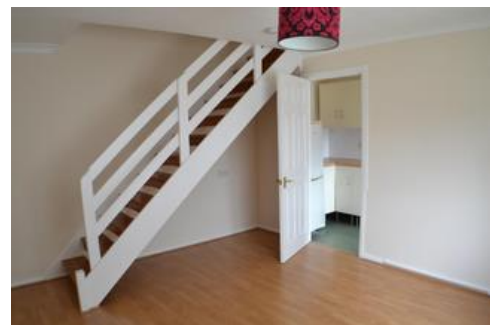




Titchfield Close, Tadley

£1,090 PCM



Council tax band: B | EPC rating: C

- Cluster house
- Living room
- Bathroom with shower shower

- Fully fitted kitchen
- Master bedroom with built in wardrobes

BELVOIR!

Property is personal

Email
tadley.lettings@belvoir.co.uk

Phone
01189 820 333

Description

Available from 2nd June 2024

Belvoir Tadley are pleased to offer for long term rental this delightful one bedroom house in a cul-de-sac location in a popular residential area of Tadley.

The property comprises an entrance hall, lounge, fully fitted kitchen with cooker, washing machine and fridge/freezer, bathroom with shower attachment over the bath and double bedroom with built in wardrobes.

Benefits include gas central heating, garden and one allocated parking space.

Photographs

