



4  2  2 

Stanfield , Tadley

**BELVOIR!**

£1,800 PCM



## Key Features

- > Terrace House
- > Kitchen with white goods
- > Lounge
- > Dining room
- > Cloakroom
- > Four double bedrooms
- > EPC rating C

Belvoir are proud to offer to the lettings market this smartly presented and EXTENDED, four bedroom family home located in the centre of Tadley. To be let furnished or unfurnished.

On the ground floor, there is an entrance hall, fully fitted kitchen with white goods, dining room, living room with patio doors and cloakroom.

On the first floor, there are three good sized bedrooms and a modern family bathroom, with shower over the bath and underfloor heating. On the top floor, the loft has been converted to create a further double bedroom, with an en-suite shower room, whilst retaining some useful eaves storage.

Outside, there is an enclosed rear garden with an area of patio adjacent to the house, with steps leading up to an area of lawn, a seating area, a summer house and gated access to the rear. To the front the garden has been block paved to provide off-street parking for two vehicles.

Please be aware there is a small pond to the back garden. Please note that all viewers attend property viewings at their own risk and must assess any hazards themselves.

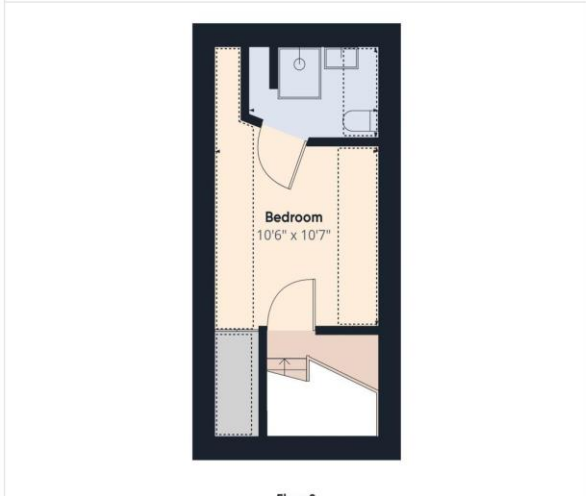
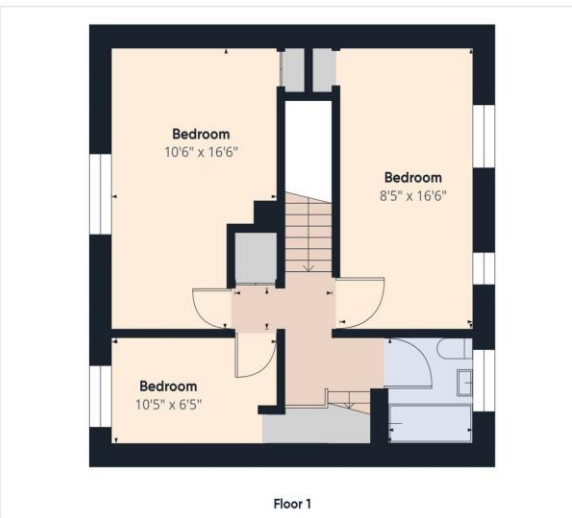
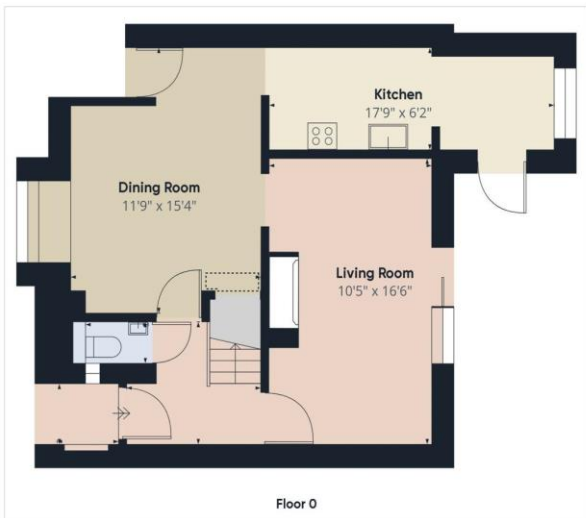












# BELVOIR

Property is personal

**Approximate total area<sup>(1)</sup>**  
1222.51 ft<sup>2</sup>

**Reduced headroom**  
75.31 ft<sup>2</sup>

(1) Excluding balconies and terraces

☐ Reduced headroom  
(below 1.5m/4.92ft)

While every attempt has been made to ensure accuracy, all measurements are approximate, not to scale. This floor plan is for illustrative purposes only.

GIRAFFE360



Contact us today to arrange a viewing...

# BELVOIR!

[www.belvoir.co.uk](http://www.belvoir.co.uk)

01189 820 333