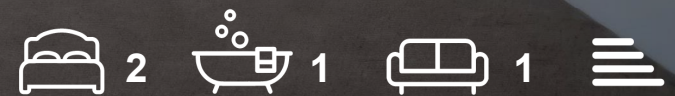




Rabbs Mill House, Uxbridge, UB8 2PD
£1,550 Per Month





Rabbs Mill House, Uxbridge, UB8 2PD

£1,550 Per Month

- Two Bedroom Apartment
- Unrestricted Parking
- Lift Access
- Offered Unfurnished
- Spacious and Bright
- Separate Kitchen
- Neutral Decor
- Convenient Location

Description

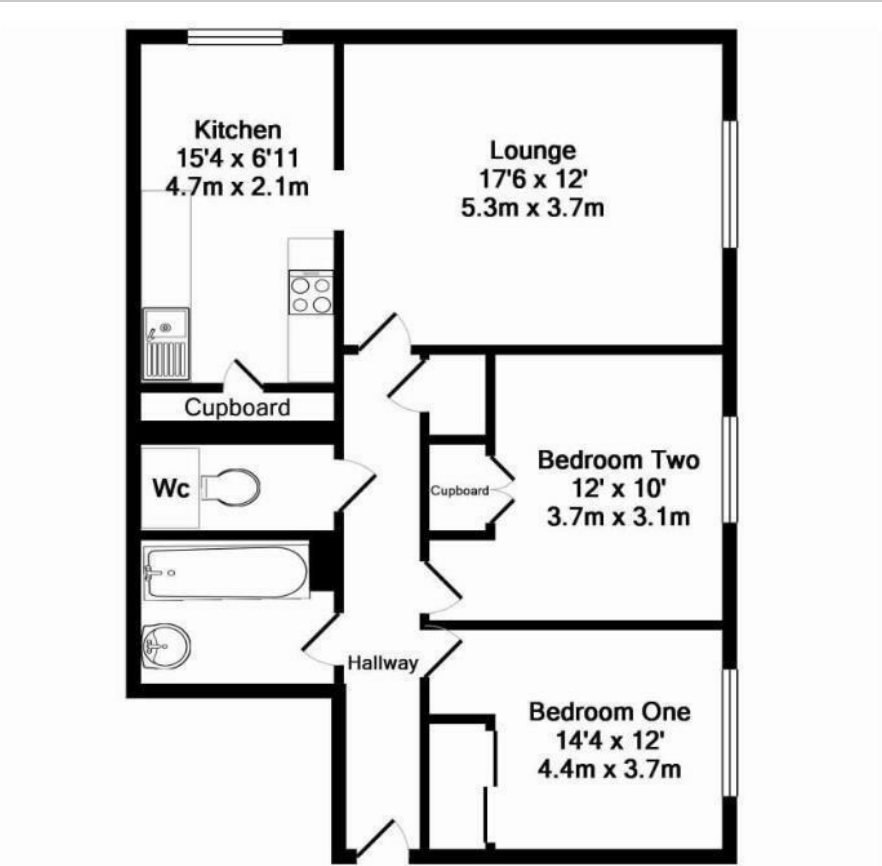
An incredibly spacious two double bedroom apartment, situated a short walk from Uxbridge Town Centre. Neutrally decorated throughout this property boasts lots of natural light and has a lovely, modern separate kitchen. Offered on an unfurnished basis.

Situation

Chiltern View Road can be found just a few moments away from the Cowley Road with a selection of shops and bus routes which connect with Uxbridge town centre (Uxbridge Station, Metropolitan and Piccadilly Line), Hayes Town (Crossrail), Heathrow, Stockley Park, Northolt, Harrow and more.



Floor Plans

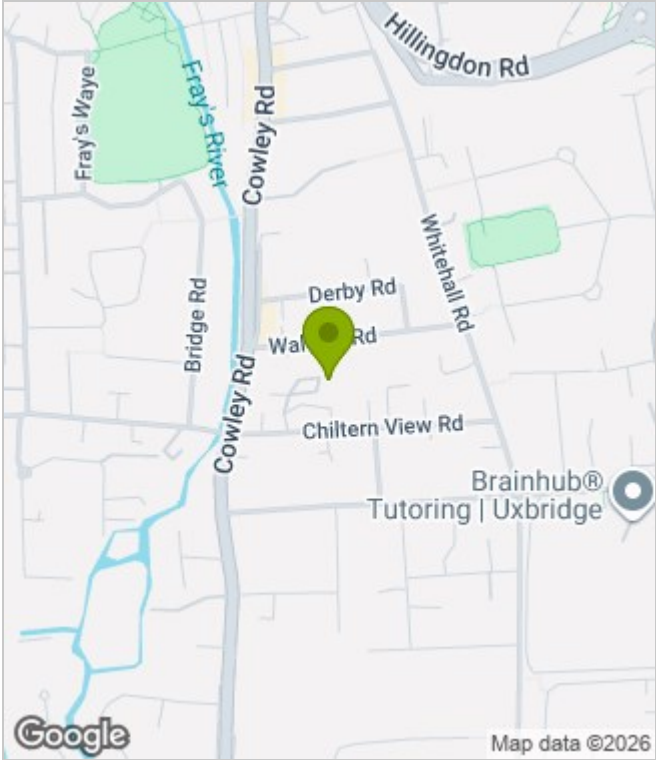


TOTAL APPROX. FLOOR AREA 486 SQ.FT. (45.2 SQ.M.)

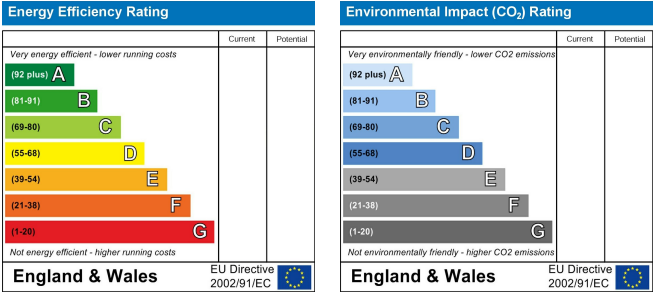
Whilst every attempt has been made to ensure the accuracy of the floor plan contained here, measurements of doors, windows, rooms and any other items are approximate and no responsibility is taken for any error, omission, or mis-statement. This plan is for illustrative purposes only and should be used as such by any prospective purchaser. The services, systems and appliances shown have not been tested and no guarantee as to their operability or efficiency can be given

Made with Metropix ©2014

Area Map



Energy Performance Graph



These particulars, whilst believed to be accurate are set out as a general outline only for guidance and do not constitute any part of an offer or contract. Intending purchasers should not rely on them as statements of representation of fact, but must satisfy themselves by inspection or otherwise as to their accuracy. No person in this firms employment has the authority to make or give any representation or warranty in respect of the property.