

ALLDAY  
& MILLER



Harefield Road, Uxbridge, UB8 1PS  
£750,000

4 2 1 c





Harefield Road, Uxbridge, UB8 1PS

**£750,000**

- Four Double Bedroom Semi Detached
- Master Bedroom with En Suite
- North Uxbridge Location
- Off Street Parking for Multiple Vehicles
- Short Drive to M40/M25
- Two Bathrooms
- Open Plan Kitchen Diner
- Walking Distance to Vyners & Hermitage Schools
- Private Rear Garden
- Close to Uxbridge High Street & Station



## Description

This trendy and stylish semi-detached house presents an exceptional opportunity for family living. With a generous layout, the ground floor boasts a modern fitted kitchen and breakfast room.

The ground floor features three generous bedrooms, complemented by two well-appointed bathrooms, ensuring convenience for family living. Each bedroom is filled with natural light, creating a warm and welcoming atmosphere.

Ascending to the first floor, you will find an additional double bedroom with ample of storage space.

To the front there is a secure gated driveway with off street parking for multiple vehicle's. The rear garden is mainly laid to lawn with a raised decked seating area perfect for outside dining and entertaining.

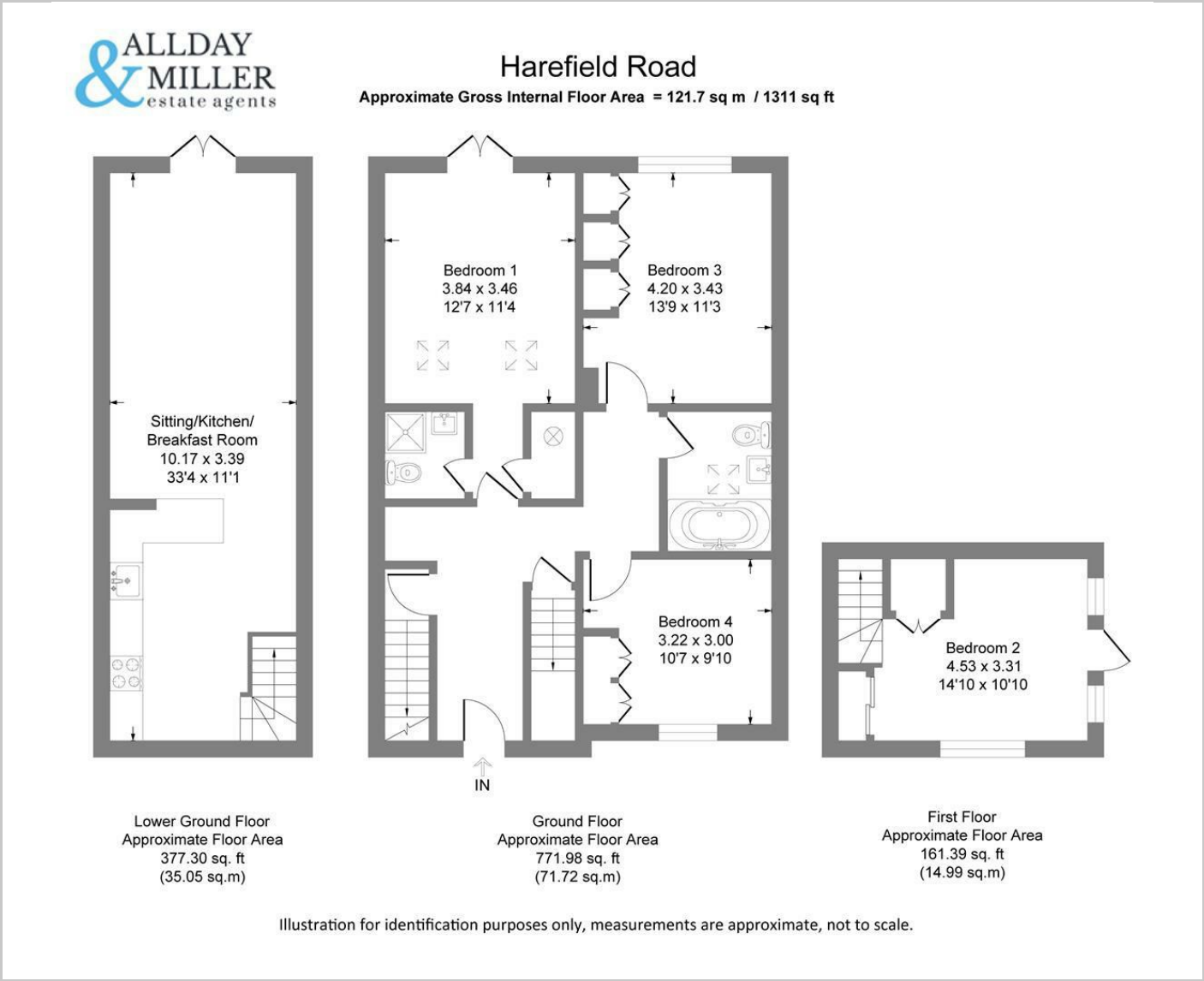
## Situation

Harefield Road is situated in North Uxbridge just moments from Uxbridge town centre with its multitude of shops, restaurants, bars, bus links and Uxbridge Metropolitan/Piccadilly line train station. There are a number of well-regarded local schools within close proximity including Hermitage primary and Vyners secondary school. There are excellent road links close by with A40/M40 and M4 offering access to London, Heathrow and the Home Counties.



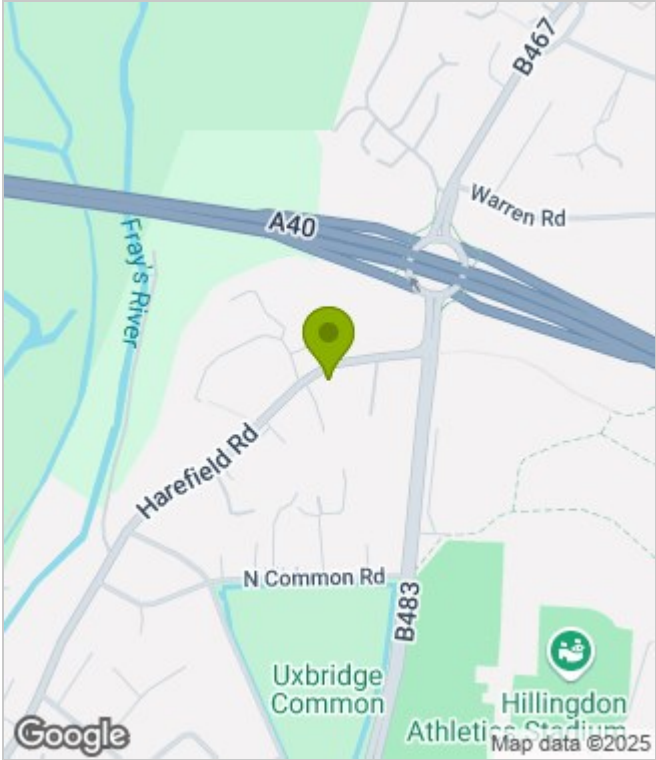


Floor Plans



These particulars, whilst believed to be accurate are set out as a general outline only for guidance and do not constitute any part of an offer or contract. Intending purchasers should not rely on them as statements of representation of fact, but must satisfy themselves by inspection or otherwise as to their accuracy. No person in this firms employment has the authority to make or give any representation or warranty in respect of the property.

Area Map



Energy Performance Graph

