

ALLDAY
& MILLER

Cherry Orchard, West Drayton, UB7 7JR
£725,000

3 2 2 D



Cherry Orchard, West Drayton, UB7 7JR

£725,000

- Detached House
- Two Bathrooms
- Short Walk to Elizabeth Line
- Complete Chain
- Potential To Extend STPP
- Three Double Bedrooms
- Downstairs WC
- Separate Annexe With Own Bathroom
- Large Double Reception Room
- Large Own Driveway

Description

This delightful house presents an exceptional opportunity for those seeking a spacious and well-maintained family home. The property is in lovely condition throughout, offering a warm and inviting atmosphere. Upon entering, you are greeted by a generous double reception room, a well-appointed kitchen and the downstairs WC adds to the practicality of the layout.

The first floor boasts three comfortable bedrooms, with the master suite benefiting from its own ensuite bathroom and a family bathroom serves the other bedrooms.

Externally, the property features a large front driveway, providing off-street parking for multiple vehicles. The rear garden is a private garden mainly laid to lawn with an annex including a bedroom, shower & WC.

Situation

Cherry Orchard is conveniently located in the heart of West Drayton just a short distance from the station with the Elizabeth line providing links to central London and the surrounding areas. The high street with multiple local shops, takeaways, restaurants and coffee shops. Uxbridge town centre is close by with a wider range of shops and entertainment facilities. A number of highly regarded schools in the local area including St Martin's primary school. For the commuters the M4 and M25 motorway networks, Stockley Business Park, Brunel University and Uxbridge are all within easy motoring distance.



Floor Plans

Cherry Orchard, West Drayton, UB7

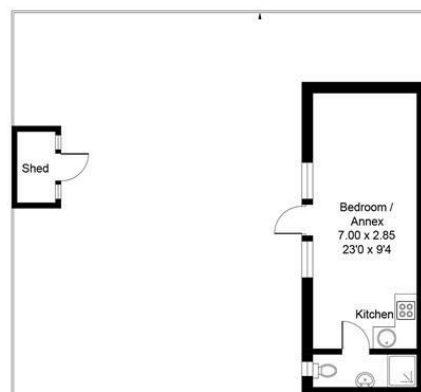
Approximate Area = 1282 sq ft / 119.1 sq m

Annex = 249 sq ft / 23.1 sq m

Total = 1531 sq ft / 142.2 sq m

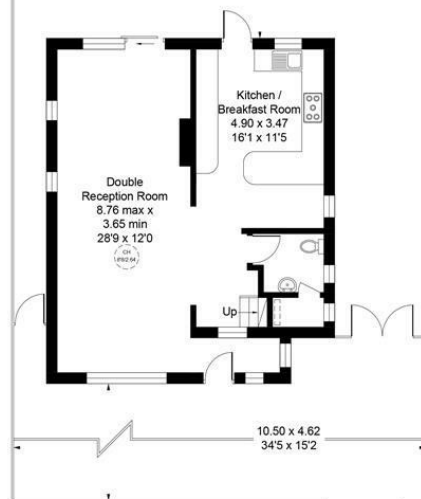
(Excluding Shed)

For identification only - Not to scale



Garden
13.00 x 10.76
42'8 x 35'4

420 x 334



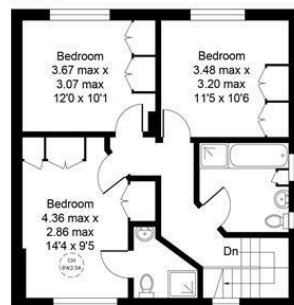
Ground Floor

Floor plan produced in accordance with RICS Property Measurement Standards incorporating International Property Measurement Standards (IPMS2 Residential). ©Vizion Property Marketing 2025. Produced for Allday & Miller.



 = Ceiling Height

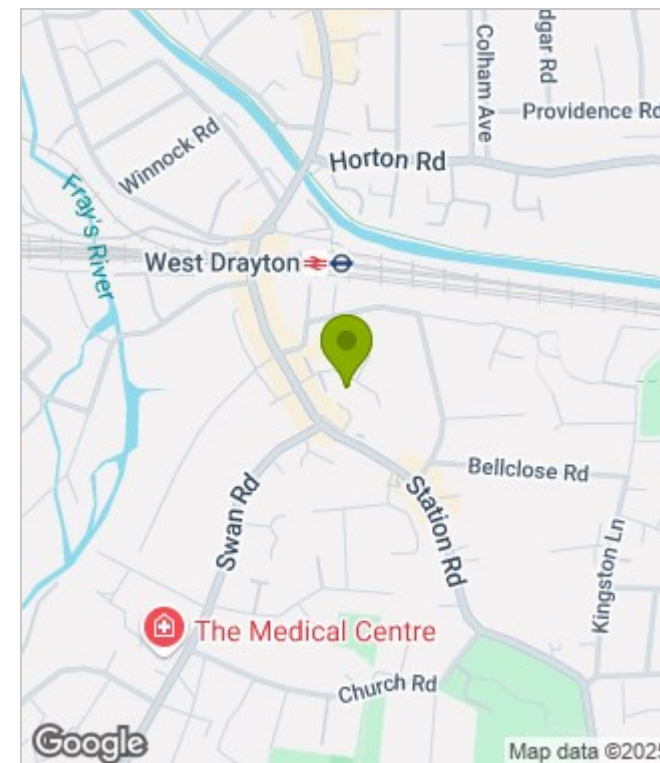
= Reduced headroom below 1.5m / 5'0"



First Floor



Area Map



Energy Performance Graph

Energy Efficiency Rating

Band	Score Range	Color
A	92 plus	Dark Green
B	81-91	Light Green
C	69-80	Medium Green
D	55-68	Yellow
E	39-54	Orange
F	21-38	Red-Orange
G	1-20	Red

Very energy efficient - lower running costs

Not energy efficient - higher running costs

Environmental Impact (CO₂) Rating

Band	Score Range	Color
A	92 plus	Dark Green
B	81-91	Light Green
C	69-80	Medium Green
D	55-68	Yellow
E	39-54	Orange
F	21-38	Red-Orange
G	1-20	Red

Very environmentally friendly - lower CO₂ emissions

Not environmentally friendly - higher CO₂ emissions

England & Wales

EU Directive 2002/91/EC

England & Wales

EU Directive 2002/91/EC

These particulars, whilst believed to be accurate are set out as a general outline only for guidance and do not constitute any part of an offer or contract. Intending purchasers should not rely on them as statements of representation of fact, but must satisfy themselves by inspection or otherwise as to their accuracy. No person in this firm's employment has the authority to make or give any representation or warranty in respect of the property.