

ALLDAY
& MILLER



Sylvana Close, Hillingdon, UB10 0BH
£650,000

3 2 2





Sylvana Close, Hillingdon, UB10 0BH

£650,000

- Three Bedrooms
- Two Bathrooms
- Located just Off Vine Lane
- Beautiful Gardnes
- Outstanding Kitchen/Diner
- Detached
- Close to John Locke Academy
- Quiet North Hillingdon Cul de sac
- New Wiring and Heating
- Large Driveway

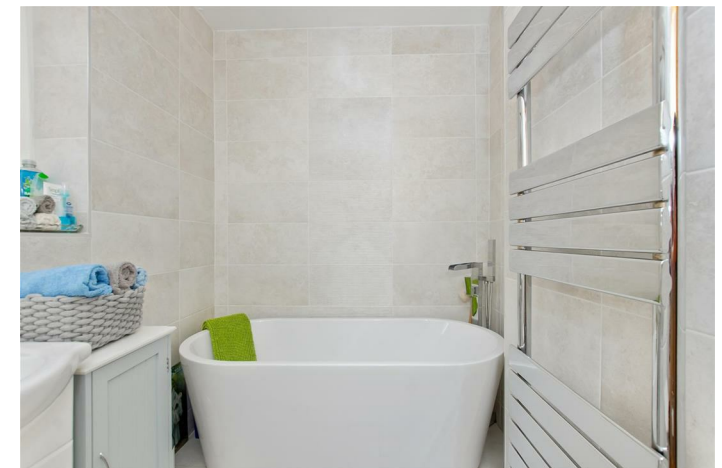
Description

This impressive family home enjoys bright accommodation that comprises of; large entrance hallway, living room that overlooks the garden, state of the art Kitchen/breakfast room with integrated appliances, a modern ground floor bathroom. The first floor provides three bedrooms and a family bathroom. The whole property has been recently improved with new Gas, electrics and engineered oak flooring throughout.

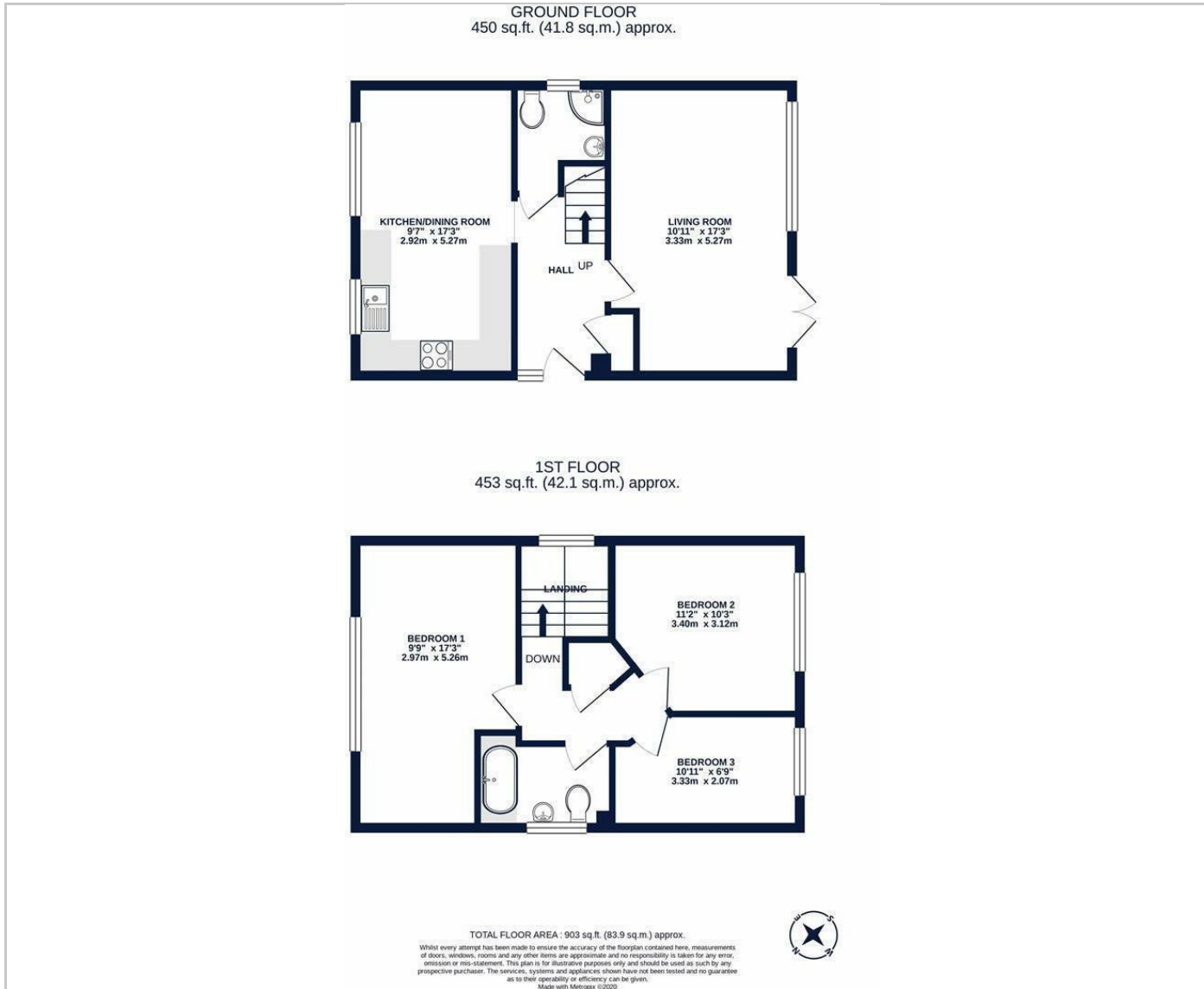
Outside the front has a large driveway for parking. The rear garden is approx. 65ft with lawn, patio area and storage shed. The garden enjoys beautiful borders and privacy.

Situation

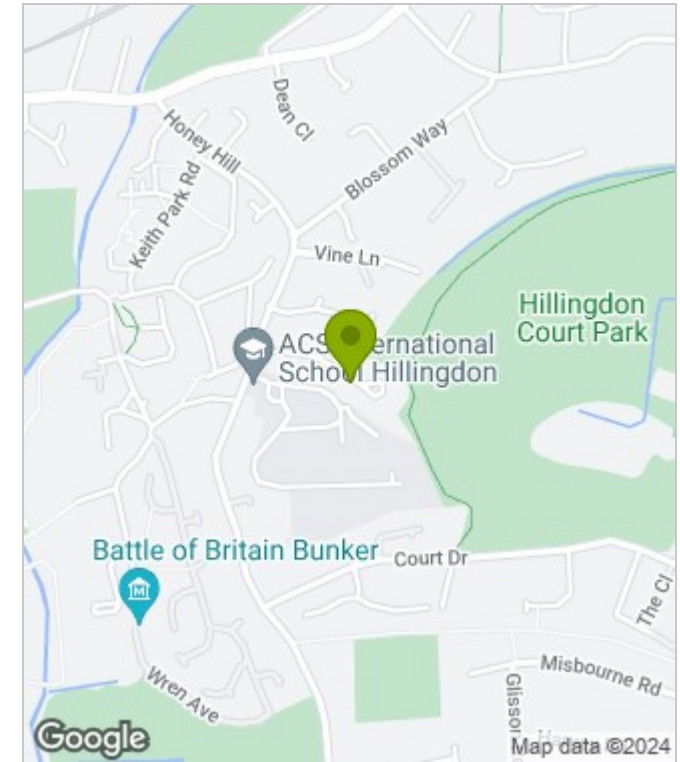
Sylvana Close is a sought after Cul-De-Sac in North Hillingdon. There are well regarded schools in close proximity and recreational facilities also nearby such as the very scenic Court Park, Hillingdon Golf and Cricket Club and the newly opened fitness and leisure centre in Uxbridge. Uxbridge Town Centre with its array of shopping facilities, restaurants and bars and the Piccadilly/Metropolitan Line Station is a short distance away along with the A40/M40/M4 and M25 giving access to London and the Home Counties.



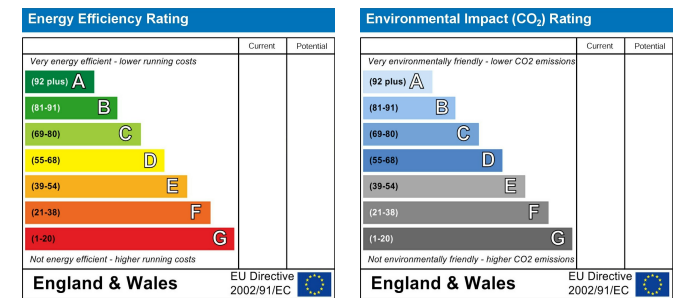
Floor Plans



Area Map



Energy Performance Graph



These particulars, whilst believed to be accurate are set out as a general outline only for guidance and do not constitute any part of an offer or contract. Intending purchasers should not rely on them as statements of representation of fact, but must satisfy themselves by inspection or otherwise as to their accuracy. No person in this firm's employment has the authority to make or give any representation or warranty in respect of the property.