

ALLDAY  
& MILLER



Dexter Road, Harefield, UB9 6RF  
£525,000

3 1 2 D



Dexter Road, Harefield, UB9 6RF

**£525,000**

- Three Bedrooms
- Downstairs W/C
- Separate Dining Room
- Garage Converted into Dining Room
- Sought After Location
- End of Terrace
- Kitchen/Diner
- Private Driveway With Off Street Parking
- Private Rear Garden
- Walking Distance to Harefield High Street

## Description

This property brought to the market comprises of an inviting entrance hall, downstairs WC, bright and spacious reception lounge, sleek fitted kitchen leading into the conservatory overlooking and providing access to the rear, a dining room to complete the ground floor.

Rising to the first floor boasts three bedrooms and a family bathroom suite.

To the front a low maintenance garden leading to the accommodation with a driveway for off road parking for three vehicles. To the rear enjoys a private and secluded garden with a lawn and patio area and a shed ideal for extra storage space.

## Situation

Dexter Road is within walking distance (0.1 miles) to Harefield Village and its shops and amenities. Harefield is surrounded by some beautiful countryside along the Grand Union Canal and it is well placed for an abundance of activities such as walking/hiking, fishing, horse riding, football, cricket and golf. For the commuter, there is access into London on the Chiltern Line at Denham and Rickmansworth and the underground stations at Uxbridge, Rickmansworth, Ruislip and Northwood. Bus routes also towards Uxbridge, Rickmansworth, Ruislip and Northwood. Easy motorist access to the A/M40 and M25. There are a number of highly regarded schools in the local area including Harefield Junior school and Harefield Academy.

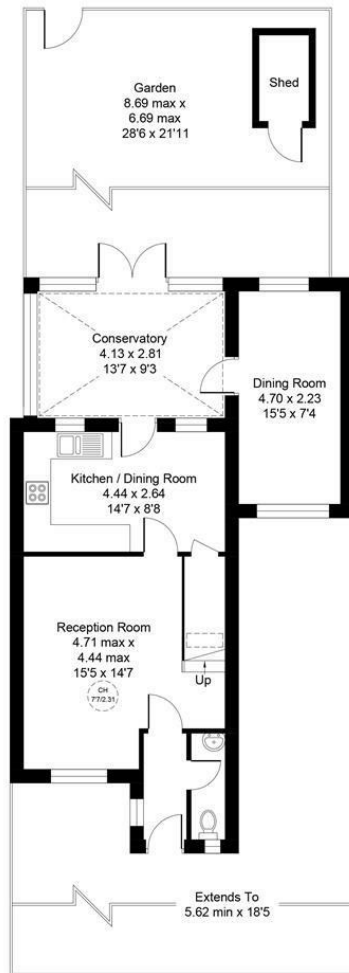


## Floor Plans

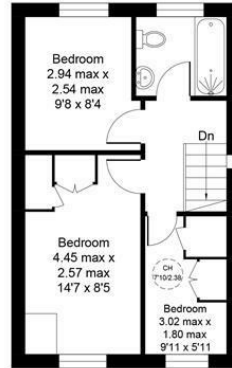
### Dexter Road, Harefield, Uxbridge, UB9

Approximate Area = 1016 sq ft / 94.4 sq m  
(Excluding Shed)

For identification only - Not to scale



Ground Floor



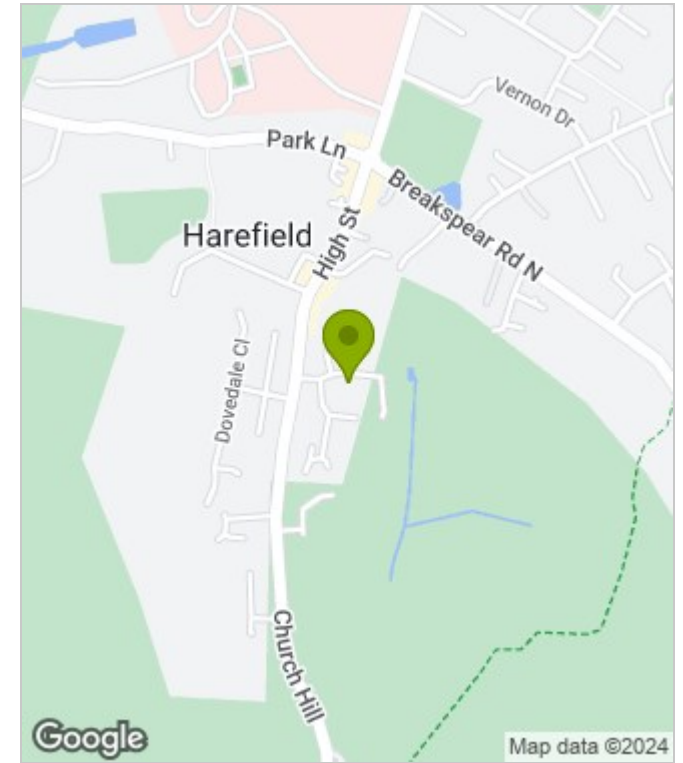
First Floor



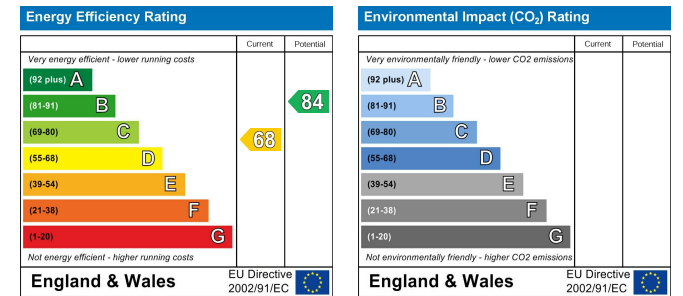
Floor plan produced in accordance with RICS Property Measurement Standards incorporating International Property Measurement Standards (IPMS2 Residential). ©Vizion Property Marketing 2024. Produced for Allday & Miller.

**ALLDAY & MILLER**  
estate agents

## Area Map



## Energy Performance Graph



These particulars, whilst believed to be accurate are set out as a general outline only for guidance and do not constitute any part of an offer or contract. Intending purchasers should not rely on them as statements of representation of fact, but must satisfy themselves by inspection or otherwise as to their accuracy. No person in this firm's employment has the authority to make or give any representation or warranty in respect of the property.

[www.alldayandmiller.co.uk](http://www.alldayandmiller.co.uk)

192 High Street, Uxbridge, Middlesex, UB8 1LB

T: 01895 641 000 | E: sales@alldayandmiller.co.uk

T: 01895 379 549 | E: lettings@alldayandmiller.co.uk