

ALLDAY  
& MILLER



Rushes Mead, Uxbridge, UB8 2SZ  
£2,000 Per month

3 1 1





## Rushes Mead, Uxbridge, UB8 2SZ

**£2,000 Per month**

- Three Bedroom House \*Furnished or Unfurnished\*
- Modern kitchen With Appliances
- Ample Storage Throughout
- Off Street Parking
- Open Plan Kitchen/ Reception
- Smart Family Bathroom
- Gated Garden With Decked Patio
- Electric Charging Point

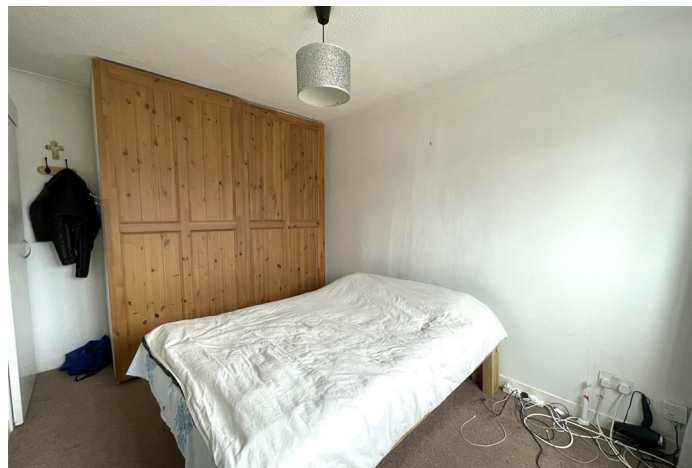


## Description

This family home is modern and convenient. Situated a short stroll from Uxbridge Town Centre, this property is accessible for people travelling by car or public transport. Boasting three bedrooms, smart family bathrooms and a delightful open plan kitchen/ reception room. Externally the property benefits from a private gated garden, with raised patio and off street parking with electric charging point.

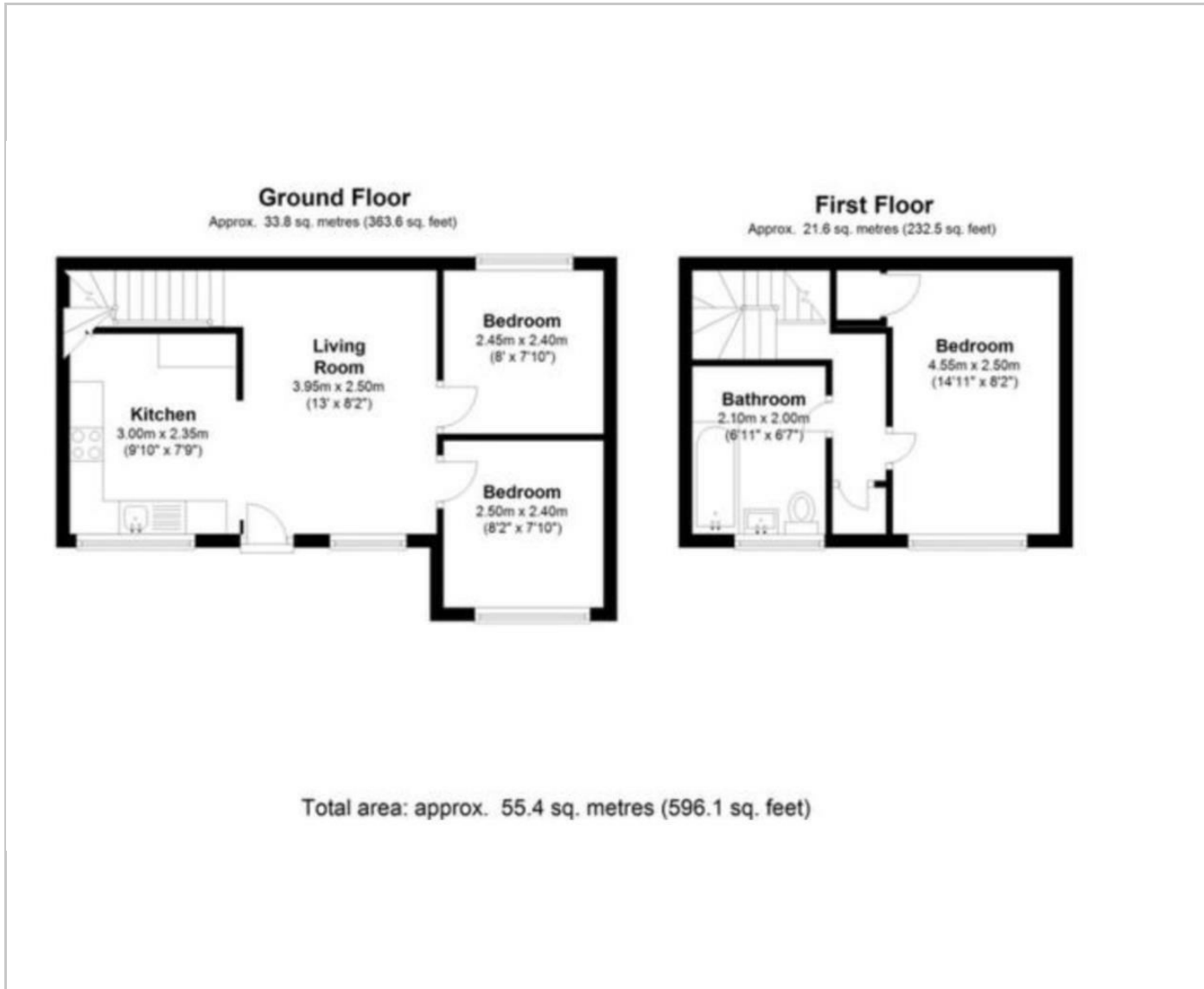
## Situation

Rushes Mead is a quiet Cul-De-Sac in a popular residential area within close proximity of good local amenities. Uxbridge town centre is a short walk away, with plentiful bars, restaurants, gyms, two shopping centres, plus the Metropolitan and Piccadilly lines run from Uxbridge station. Brunel University, Hillingdon Hospital and Stockley Park are all within close proximity, as are a number of well-regarded schools.

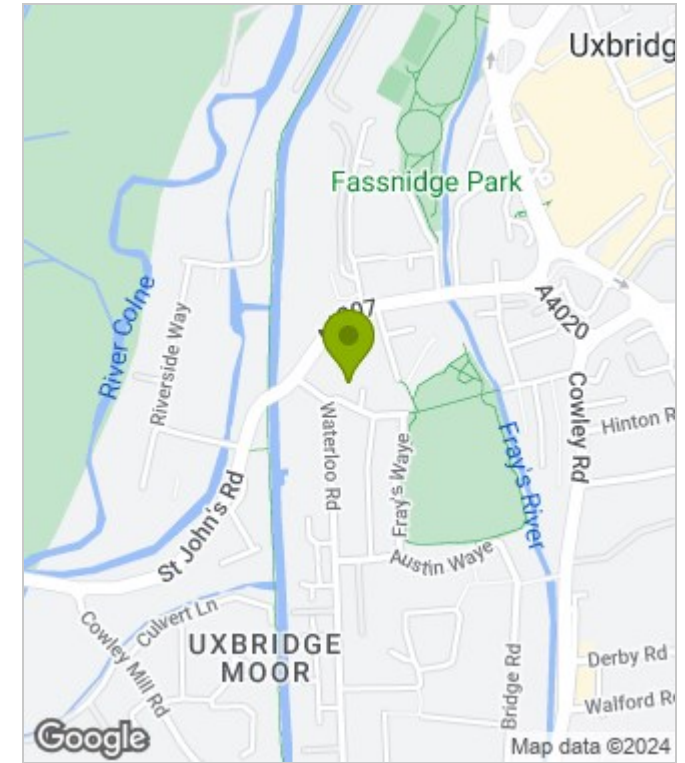




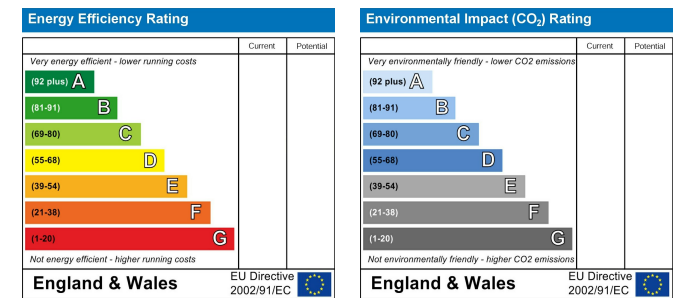
## Floor Plans



## Area Map



## Energy Performance Graph



These particulars, whilst believed to be accurate are set out as a general outline only for guidance and do not constitute any part of an offer or contract. Intending purchasers should not rely on them as statements of representation of fact, but must satisfy themselves by inspection or otherwise as to their accuracy. No person in this firm's employment has the authority to make or give any representation or warranty in respect of the property.