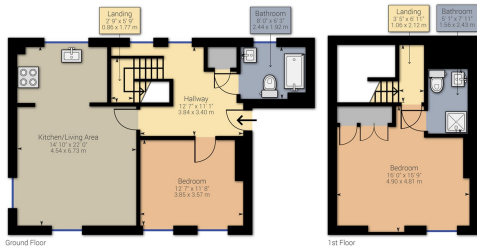


- Two double bedroom Penthouse apartment
- Duplex split level Luxury accomodation
- En-suite to main bedroom
- Furnished
- Rarely Available
- GCH and double glazed
- Allocated parking
- Close to Uni and Town Centre
- No Smokers, Pets, Children
- Available 10 October



Approximate net internal area: 941.41 sq ft / 87.48 sq m
While every attempt has been made to ensure accuracy, all measurements are approximate, not to scale. This floor plan is for illustrative purpose only and should be used as such by any prospective tenant or purchaser.

Powered by Grafic360

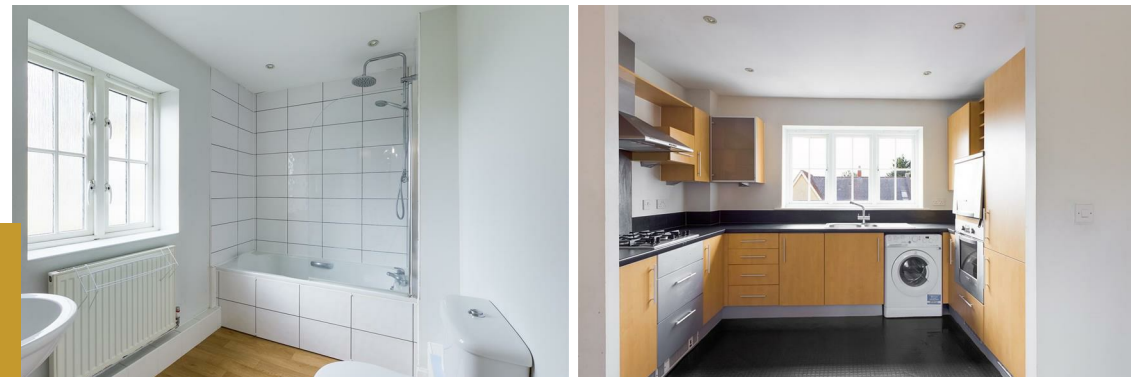


| Energy Efficiency Rating | | |
|---|----------------------------|-----------|
| | Current | Potential |
| Very energy efficient - lower running costs | | |
| (92 plus) A | | |
| (81-91) B | | |
| (69-80) C | | |
| (55-68) D | | |
| (39-54) E | | |
| (21-38) F | | |
| (1-20) G | | |
| Not energy efficient - higher running costs | | |
| England & Wales | EU Directive 2002/91/EC | |

GREENWOOD
PROPERTY CONSULTANTS

Tarrett Drive
Colchester, CO1 2NJ

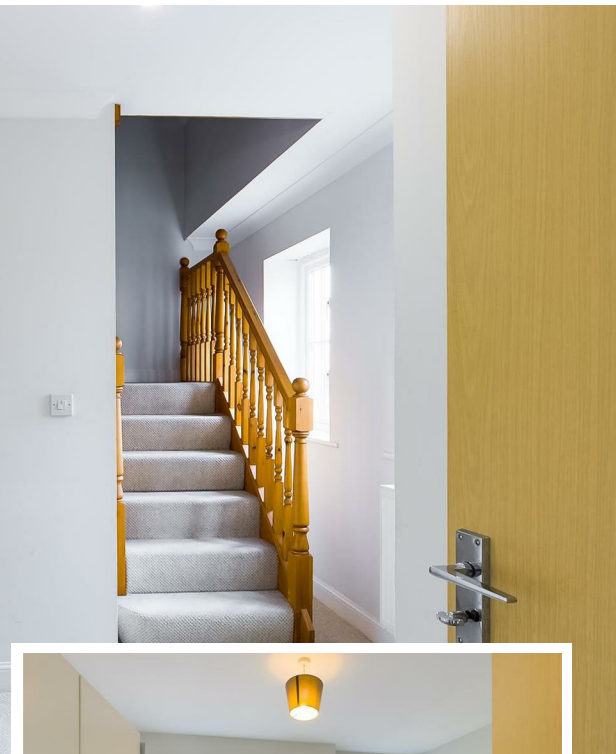
£1,500 PCM
£1,730: Deposit
8th October 2024: Available Date



Essex House
42 Crouch Street
Colchester
Essex
CO3 3HH

<http://www.greenwoodpc.co.uk>
info@greenwoodpc.co.uk
01206 616820

Agents Note: Whilst every care has been taken to prepare these particulars, they are for guidance purposes only. All measurements are approximate and are for general guidance purposes only and whilst every care has been taken to ensure their accuracy, they should not be relied upon and potential buyers/tenants are advised to recheck the measurements



Property Description

**** Students/ Workers **** A Furnished Luxury top floor duplex apartment with high specification and finish. Ideally located close to the Town Centre and the University of Essex. Entrance hall with staircase to large main bedroom with fitted wardrobes and en-suite double shower room.

Ground floor: Family bathroom with shower. Large living room leading to open plan fitted kitchen with integrated fridge/ freezer, washer/ dryer, stainless steel gas hob, extractor and oven. Bedroom 2 large double with Juliette balcony.

GCH and double glazed. Modern furniture. Allocated parking.

