

BU HOMES

Per month

£1,250

**KINETON GREEN
ROAD, SOLIHULL,
B92 7EF**



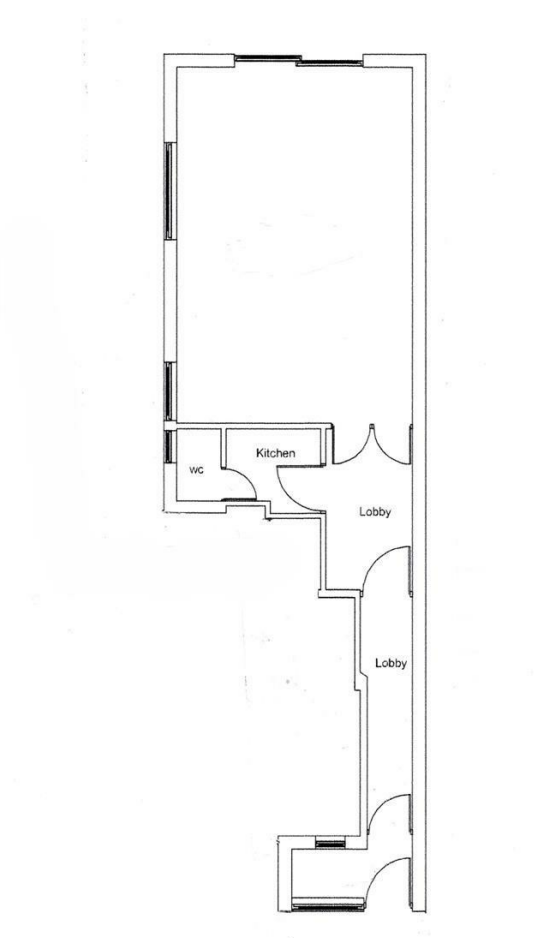
A fantastic opportunity to establish your business in a prime location! This ground floor commercial unit is available for let, offering a versatile layout perfect for a variety of uses.

- Key features include:
- A dedicated office area, ideal for private meetings or administrative work
 - A convenient kitchenette, perfect for staff breaks
 - A well-maintained toilet facility
 - A loading bay

The unit benefits from its ground floor position, providing excellent accessibility and high visibility. With a flexible floor layout, you can easily adapt the space to meet your business needs.

The property is located approximately 6 miles from Birmingham City Centre and under 2.5 miles from Solihull Town Centre whilst the nearby A41 Warwick Road and A34 Stratford Road also provides easy access to the Midlands Motorway network.

Don't miss out, contact us today to arrange a viewing!



Call us on
0121 7784443
info@buhomes.co.uk
www.buhomes.co.uk

Council Tax Band
Exempt

Energy Efficiency Rating		
	Current	Potential
Very energy efficient - lower running costs		
(92 plus) A		
(81-91) B		
(69-80) C		
(55-68) D		
(39-54) E		
(21-38) F		
(1-20) G		
Not energy efficient - higher running costs		
England & Wales	EU Directive 2002/91/EC	

Agents Note: Whilst every care has been taken to prepare these particulars, they are for guidance purposes only. All measurements are approximate and are for general guidance purposes only and whilst every care has been taken to ensure their accuracy, they should not be relied upon and potential buyers are advised to recheck the measurements.

