

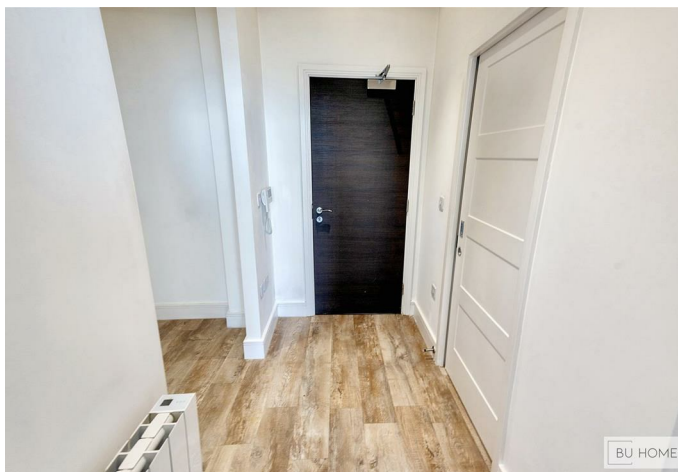


# BU HOMES

Per month

## £950 Per

### COVENTRY ROAD, SHELDON, B26 3DF



- Stylish 4th Floor Apartment
- Entrance Hall
- Kitchen Area with Integrated Appliances
- Modern Shower Room
- Residents' Gym & Rooftop Garden
- Close To Shops, Pubs & Restaurants
- Open Plan Living Room
- One Double Bedroom
- Concierge Service & Lift Access
- Secure Allocated Parking



This stylish one-bedroom apartment is located on the 4th/top floor of a modern development close to the Aldi supermarket on the A45 and offers excellent access to the HS2 Interchange, Birmingham Airport, Solihull and the Midlands Motorway Network.

Decorated to a high standard, the accommodation features a bright and spacious open-plan living area with large windows offering views of the surrounding area. The kitchen area comes fully equipped with integrated appliances including a fridge-freezer, washer-dryer, dishwasher, oven and hob. The bedroom includes a wardrobe and the bathroom features a modern shower.

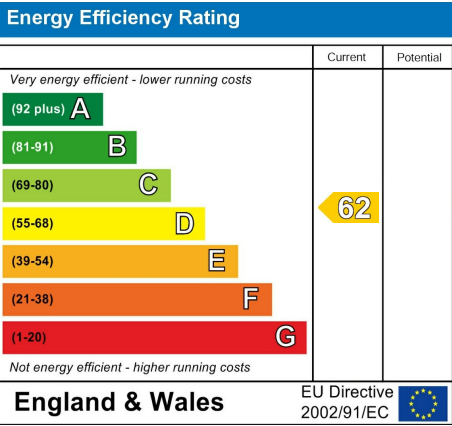
Residents benefit from a dedicated parking space with security cameras, secure bicycle storage and a hotel-style concierge service. Additional amenities include access to a rooftop garden, private residents' gym, outdoor workout space and lift access.

The development is located near the beautiful 300-acre Sheldon Country Park and is surrounded by a wide range of amenities within walking distance; including a variety of shops, pubs and restaurants. This apartment offers modern convenient living, perfect for professionals or couples alike.

Available to rent immediately, please contact us today to arrange a viewing.

Call us on  
**0121 7784443**  
[info@buhomes.co.uk](mailto:info@buhomes.co.uk)  
[www.buhomes.co.uk](http://www.buhomes.co.uk)

**Council Tax Band**  
**A**



Agents Note: Whilst every care has been taken to prepare these particulars, they are for guidance purposes only. All measurements are approximate and are for general guidance purposes only and whilst every care has been taken to ensure their accuracy, they should not be relied upon and potential buyers are advised to recheck the measurements.

