

LEASEHOLD



BU HOMES

£200,000

## TOUCHWOOD HALL CLOSE, SOLIHULL, B91 2UE

- Ground Floor Apartment
- Convenient Town Centre Location
- Spacious Living Room
- Fitted Breakfast Kitchen
- Two Double Bedrooms
- Shower Room & Separate WC
- Single Garage & Unallocated Parking
- Outside Patio & Communal Gardens





A well-presented ground floor apartment being conveniently situated in the heart of Solihull Town Centre within easy reach of the local amenities, public transport links and the Midlands motorway network.

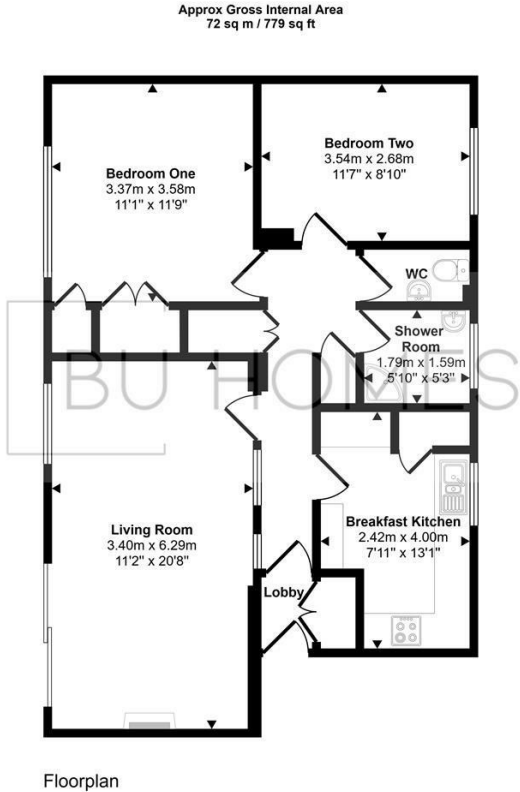
Benefiting from gas fired central heating, uPVC double-glazing and accessed via a communal lobby, the neutrally decorated accommodation comprises in brief: hallway, spacious living room with a patio door opening to a paved terrace, a fitted breakfast kitchen, two double bedrooms, a shower room and a separate WC.

Outside, there are well-maintained communal gardens, unallocated off-road parking and a single garage en-bloc.

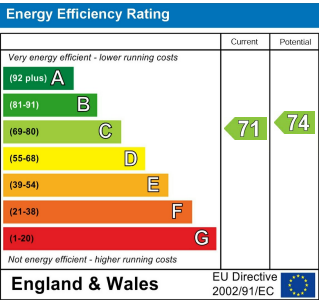
Call us on  
**0121 7784443**

[info@buhomes.co.uk](mailto:info@buhomes.co.uk)  
[www.buhomes.co.uk](http://www.buhomes.co.uk)

**Council Tax Band**  
**C**



This floorplan is only for illustrative purposes and is not to scale. Measurements of rooms, doors, windows, and any items are approximate and no responsibility is taken for any error, omission or mis-statement. Icons of items such as bathroom suites are representations only and may not look like the real items. Made with Made Snappy 360.



Agents Note: Whilst every care has been taken to prepare these particulars, they are for guidance purposes only. All measurements are approximate and are for general guidance purposes only and whilst every care has been taken to ensure their accuracy, they should not be relied upon and potential buyers are advised to recheck the measurements.

