

LEASEHOLD



BU HOMES

Asking price

£250,000

Flat - Purpose Built

4 LOXLEY SQUARE, SOLIHULL, B92 7DW

FEATURES

- Freehold
- Sought After Location
- Beautifully Presented
- Two Reception Rooms
- 15 Minute Walk To Olton Train Station
- 7 Minute Drive To Solihull Town Centre
- Private Parking



2 Bedroom Flat - Purpose Built located in Solihull

Solihull is situated in the heart of England and is considered to be one of the most highly sought after residential areas in the country boasting a range of local amenities including excellent schools, colleges, parks/nature walks, restaurants, bars and an excellent variety of shopping centres including Touchwood shopping centre and Resorts World. Solihull has convenient road networks linking the M42, M6 and A45 Coventry Road giving easy access to the nec Arena, Birmingham International Airport and Railway Station.

The property is conveniently located being near local shops, excellent primary and secondary schools, as well as Olton

Call us on

0121 7784443

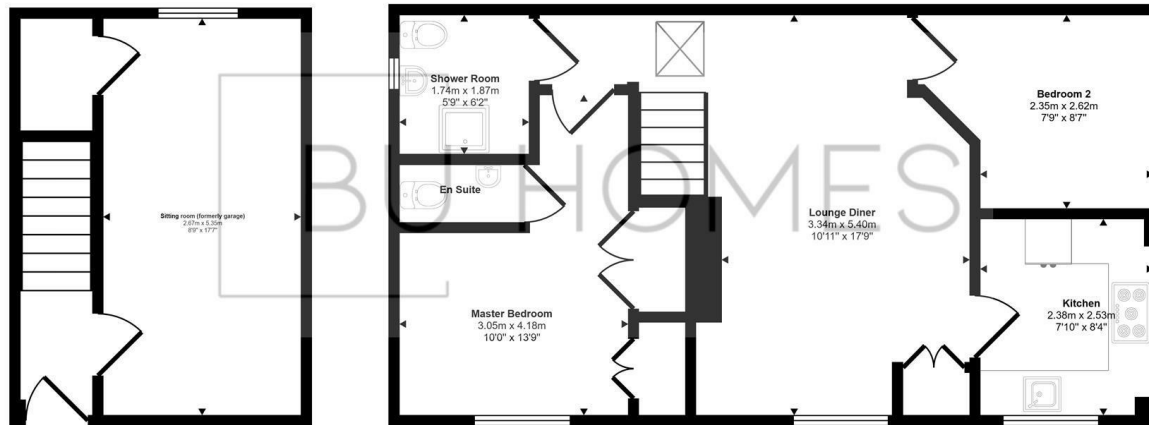
info@buhomes.co.uk

www.buhomes.co.uk

Council Tax Band

D

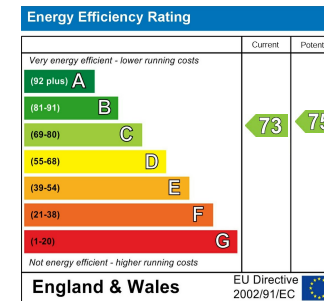
Approx Gross Internal Area
74 sq m / 801 sq ft



Ground Floor
Approx 20 sq m / 218 sq ft

First Floor
Approx 54 sq m / 583 sq ft

This floorplan is only for illustrative purposes and is not to scale. Measurements of rooms, doors, windows, and any items are approximate and no responsibility is taken for any error, omission or mis-statement. Icons of items such as bathroom suites are representations only and may not look like the real items. Made with Made Snappy 360.



Agents Note: Whilst every care has been taken to prepare these particulars, they are for guidance purposes only. All measurements are approximate and are for general guidance purposes only and whilst every care has been taken to ensure their accuracy, they should not be relied upon and potential buyers are advised to recheck the measurements.

