



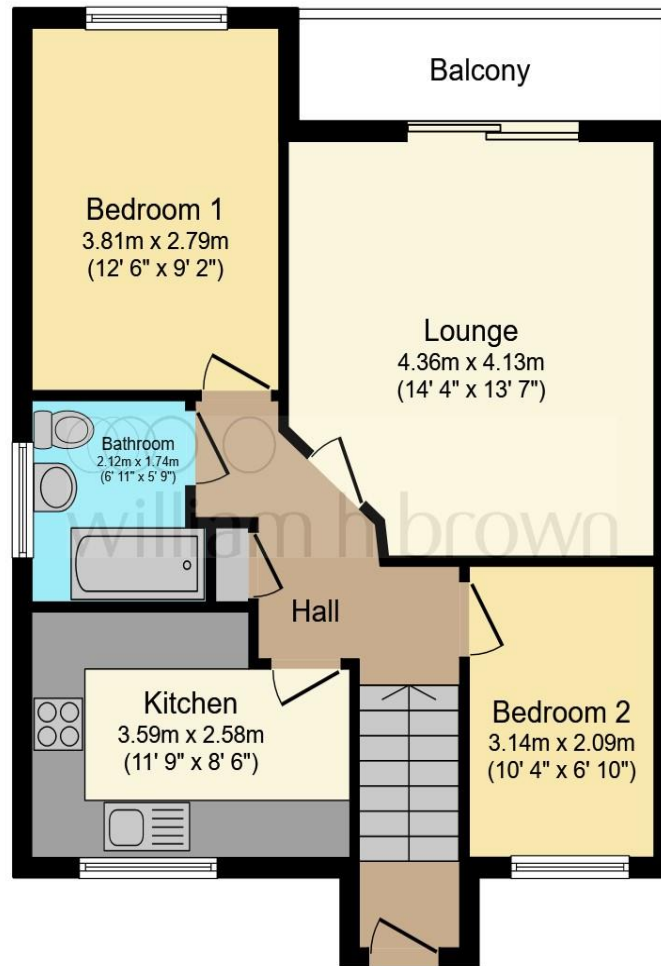
The Lawns, Stevenage, SG2 9RT

welcome to

The Lawns, Stevenage

Set in the sought after location of Poplar's, this over 60's first floor maisonette offers fantastic internal accommodation space, with the bonus of assisted living. The apartment boasts parking to front, and generous balcony with treeline views.





Entrance Hall

Lounge

14' 4" x 13' 7" (4.37m x 4.14m)

Kitchen

11' 9" x 8' 6" (3.58m x 2.59m)

Bedroom 1

12' 6" x 9' 2" (3.81m x 2.79m)

Bedroom 2

10' 4" x 6' 10" (3.15m x 2.08m)

Bathroom

6' 11" x 5' 9" (2.11m x 1.75m)

Balcony

Parking

Allocated Parking

Total floor area 57.2 sq.m. (616 sq.ft.) approx

This floor plan is for illustrative purposes only. It is not drawn to scale. Any measurements, floor areas (including any total floor area), openings and orientation are approximate. No details are guaranteed, they cannot be relied upon for any purpose and they do not form part of any agreement. No liability is taken for any error, omission or misstatement. A party must rely upon its own inspection(s). Powered by www.focalagent.com

welcome to

The Lawns, Stevenage

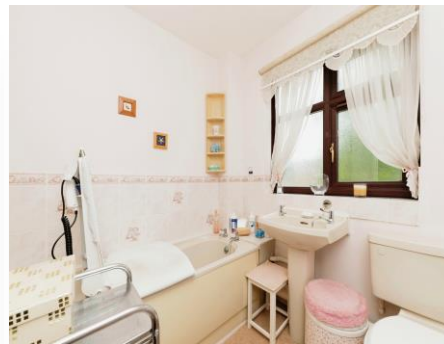
- First Floor Maisonette
- Over 60's Development
- Allocated Parking To Front
- Communal Gardens & Laundry Area
- Walking Distance To Sainsbury's & The Coopers Inn Pub

Tenure: Leasehold EPC Rating: D

This is a Leasehold property with details as follows; Term of Lease 99 years from 19 Jan 2000. Should you require further information please contact the branch. Please Note additional fees could be incurred for items such as Leasehold packs.

offers in excess of

£210,000



Please note the marker reflects the postcode not the actual property

view this property online williamhbrown.co.uk/Property/SVG102532



Property Ref:
SVG102532 - 0006

1. MONEY LAUNDERING REGULATIONS Intending purchasers will be asked to produce identification documentation at a later stage and we would ask for your co-operation in order that there is no delay in agreeing the sale. 2. These particulars do not constitute part or all of an offer or contract. 3. The measurements indicated are supplied for guidance only and as such must be considered incorrect. Potential buyers are advised to recheck measurements before committing to any expense. 4. We have not tested any apparatus, equipment, fixtures or services and it is in the buyers interest to check the working condition of any appliances. 5. Where an EPC, or a Home Report (Scotland only) is held for this property, it is available for inspection at the branch by appointment. If you require a printed version of a Home Report, you will need to pay a reasonable production charge reflecting printing and other costs. 6. We are not able to offer an opinion either written or verbal on the content of these reports and this must be obtained from your legal representative. 7. Whilst we take care in preparing these reports, a buyer should ensure that his/her legal representative confirms as soon as possible all matters relating to title including the extent and boundaries of the property and other important matters before exchange of contracts.

William H Brown is a trading name of Sequence (UK) Limited which is registered in England and Wales under company number 4268443, Registered Office is Cumbria House, 16-20 Hockliffe Street, Leighton Buzzard, Bedfordshire, LU7 1GN. VAT Registration Number is 500 2481 05.



william h brown



01438 576650



stevenage@williamhbrown.co.uk



2-4 Market Place, STEVENAGE, Hertfordshire,
SG1 1DB



williamhbrown.co.uk