

**HERTS  
LIVING**

# FREEMAN DRIVE

---

LETCWORTH GARDEN CITY

  
william h brown




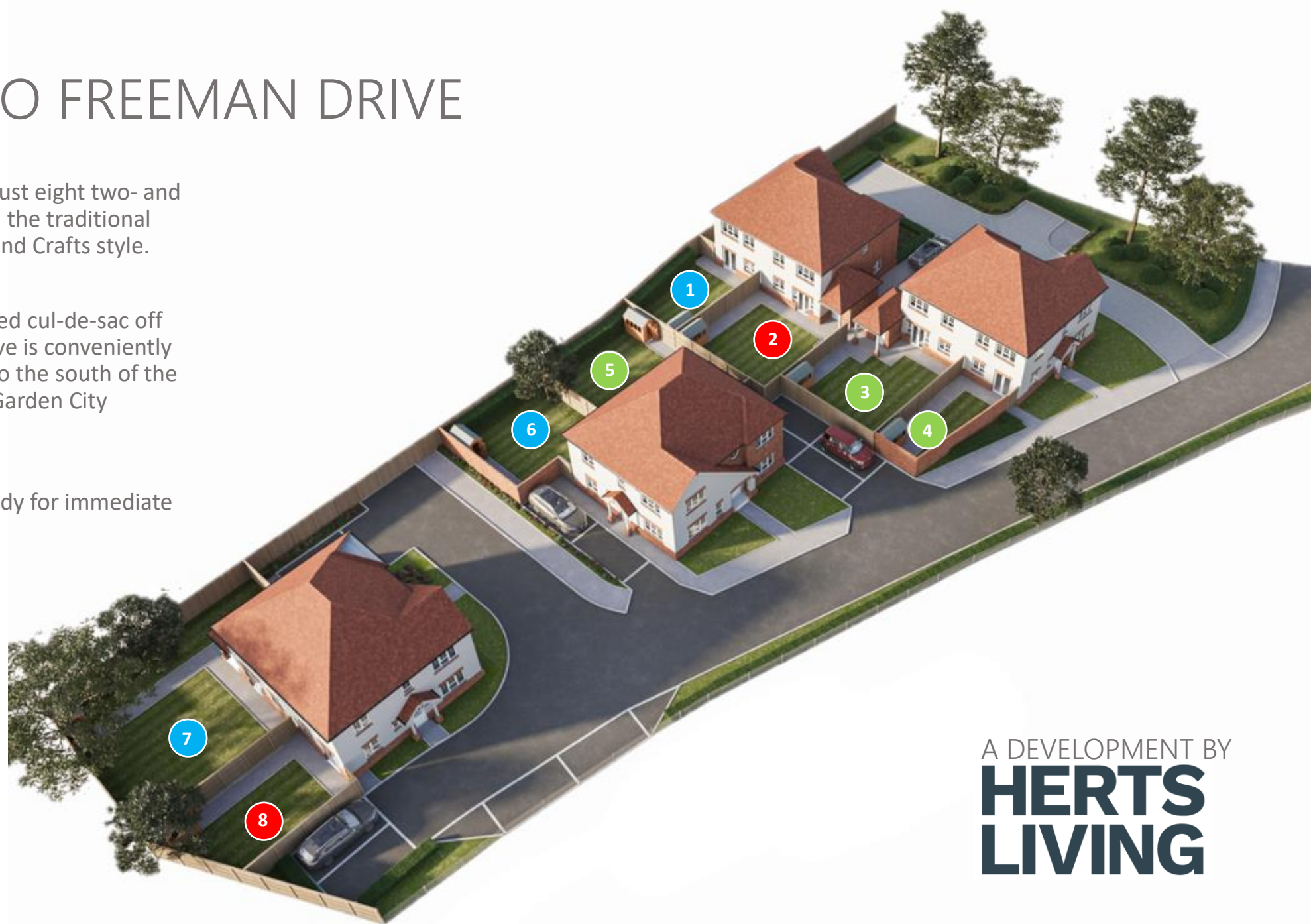
# WELCOME TO FREEMAN DRIVE

An exclusive development of just eight two- and three-bedroom homes built in the traditional Letchworth Garden City Arts and Crafts style.

Nestled within a small, secluded cul-de-sac off of Radburn Way, Freeman Drive is conveniently located just under two miles to the south of the town centre and Letchworth Garden City mainline railway station.

These stunning homes are ready for immediate occupation.

-  AVAILABLE
-  RESERVED
-  COMPLETED



A DEVELOPMENT BY  
**HERTS  
LIVING**

# THE RUSKIN

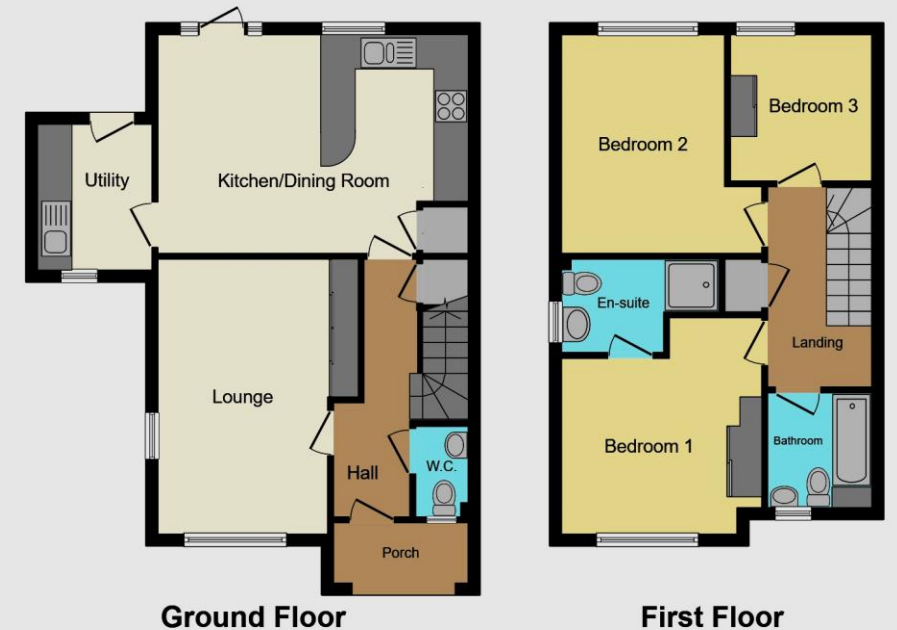
---

## 3 BEDROOM HOUSE

Beautifully balanced, both inside and out, the semi-detached three-bedroom Ruskin combines a peaceful environment with a practical living space.

Inside the thoughtful design credentials extend to a modern open plan kitchen / dining room, cloakroom and light filled dual aspect family lounge to the front. Upstairs you'll discover three bedrooms, a family bathroom and an ensuite to the main bedroom .

The balance of the Ruskin extends to your lifestyle too, with French doors off the dining room to bring the outside in, and a separate laundry room to keep the washing out of your living space. A thoughtfully planned and harmonious home, the Ruskin is the home you've been dreaming of.



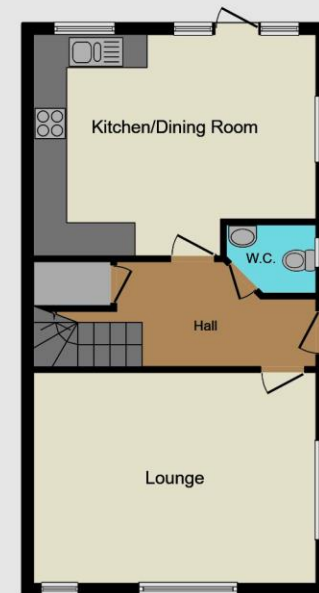
# THE CORBEL

---

## 2 BEDROOM HOUSE

Simple yet stylish, compact yet undeniably elegant, The Corbel is a two-bedroom home quite unlike any that you have seen before. Redefining the concept of the two-up-two-down, this home enjoys a spacious lounge, open plan kitchen/dining room and cloakroom downstairs. Upstairs there are two double bedrooms and a bathroom.

The Corbel embraces the best of the old and new. Traditional exteriors are enhanced by the contemporary style and modern features you'll find inside. These superb homes offer the perfect combination of quality and value, space and savings.



Ground Floor



First Floor



# SPECIFICATION

## KITCHEN/DINER

- Howdens Chelford range fitted kitchen
- Quartz worktops
- Induction hob and oven
- Integrated fridge/freezer, dishwasher and washing machine

## BATHROOMS

- Duravit sanitaryware
- Hansgrohe Raindance Select S shower
- White vanity unit
- Chrome heated towel rail to the bathroom and ensuite (where applicable)
- Porcelanosa wall and floor tiles

## INTERIOR FINISHES

- Wood effect flooring to the ground floor
- Dordogne oak doors
- Dulux paint to all walls
- Carpet to all bedrooms, landing and stairs
- White downlights to the kitchen and bathrooms
- Pendant light fittings to all other rooms

## EXTERNAL

- Lighting to the front and rear of the property
- Paved area to the rear garden
- Outside tap and socket to the rear garden



# THE LOCAL AREA

Designed in the early 20th Century to combine the benefits of town and country, Letchworth Garden City was the world's first example of the 'Garden City' concept. It provides, green open spaces, great schools, a beautiful arcade built in 1922 and leisure facilities, including the amazing Letchworth Lido, a 50m outdoor heated swimming pool.

Freeman Drive benefits from Letchworth's excellent transport links. Located on the London King's Cross to Cambridge mainline with regular services throughout the day, both London and Cambridge can be reached in less than 30 minutes. Freeman Drive itself is on the main bus route and a short 10 minute hop to the train station whilst junction 9 on the A1(M) is under a mile away by car.



# FREEMAN DRIVE

---

LETCWORTH GARDEN CITY

**HERTS  
LIVING**



**william h brown**

Selling Agent:

WILLIAM H BROWN, STEVENAGE

**01438 576650**

[stevenage@williamhbrown.co.uk](mailto:stevenage@williamhbrown.co.uk)