



SOVEREIGN COURT, BOUNDS GREEN ROAD,

£1,800 PCM

* VIRTUAL TOUR AVAILABLE * AVAILABLE IMMEDIATELY * Goldman Greg are delighted to offer this two bedroom luxury apartment located in a prime location very close by to Bounds Green Underground Station and various other bus routes and local amenities.

Benefits include a bright open plan fully fitted kitchen/living room with granite work tops, induction hob, glass splash backs & all modern appliances.

The property has been neutrally decorated throughout & fitted with high quality flooring. There is a modern bathroom which is fully tiled and has been fitted with a top end bathroom suite.

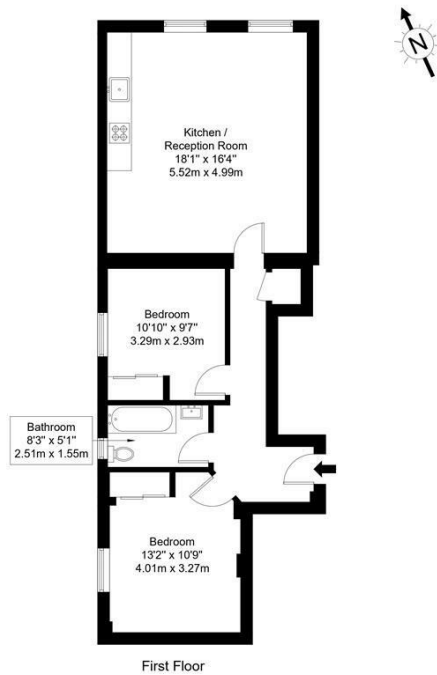
This property is one not to be missed and is available to move in immediately, early viewings are highly recommended.



Goldman Greg

Bounds Green Road, N11 2EU

Approx Gross Internal Area = 65.4 sq m / 704 sq ft



Ref :

Copyright **BLEU PLAN**

The Floor plan is not to scale and measurements and areas shown are approximate and therefore should be used for illustrative purposes only. The plan has been prepared in accordance with the RICS code of Measuring Practice and whilst we have confidence in the information produced it must not be relied on. Maximum lengths and widths are represented on the floor plan. If there is any aspect of particular importance, you should carry out or commission your own inspection of the property.
Copyright @ BLEUPLAN



Energy Efficiency Rating		Current	Potential
Very energy efficient - lower running costs			
(92 plus) A			
(81-91) B		78	78
(69-80) C			
(55-68) D			
(39-54) E			
(21-38) F			
(1-20) G			
Not energy efficient - higher running costs			
England & Wales		EU Directive 2002/91/EC	

Agents Note: Whilst every care has been taken to prepare these particulars, they are for guidance purposes only. All measurements are approximate and are for general guidance purposes only and whilst every care has been taken to ensure their accuracy, they should not be relied upon and potential buyers/tenants are advised to recheck the measurements

Goldman Greg
143 Leman Street
London
E1 8EY

02079770018
leads@goldmangreg.co.uk
www.goldmangreg.co.uk

