



DURWESTON MEWS, LONDON, W1U

£3,700

* VIRTUAL TOUR AVAILABLE * Goldman Greg are delighted to offer this bright and spacious two bedroom split level apartment located in the very heart of Baker Street. The property is ideally situated close to the amenities of Oxford Street and transport links of Baker Street and Bond Street are within close proximity.

On the ground floor, the property benefits from an open plan living room/kitchen, WC and direct access to small private patio.

The lower ground floor offers two double bedrooms which benefit bespoke fitted wardrobes and a family bathroom.

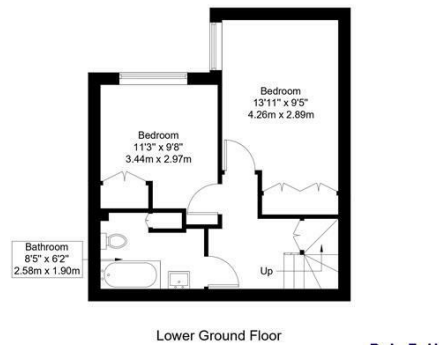
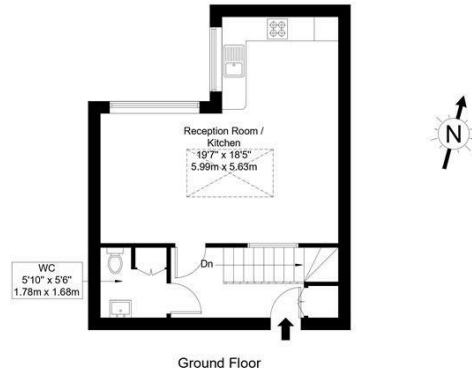
Available 03/11/2025 - early viewings are highly recommend to fully appreciate this property.



Goldman Greg

Durweston Mews, W1U 6DF

Approx Gross Internal Area = 71.6 sq m / 771 sq ft



Ref :

Copyright **BLEU PLAN**

The Floor plan is not to scale and measurements and areas shown are approximate and therefore should be used for illustrative purposes only. The plan has been prepared in accordance with the RICS code of Measuring Practice and whilst we have confidence in the information produced it must not be relied on. Maximum lengths and widths are represented on the floor plan. If there is any aspect of particular importance, you should carry out or commission your own inspection of the property.
Copyright © BleuPlan



Energy Efficiency Rating		
	Current	Potential
Very energy efficient - lower running costs		
(92 plus) A		89
(81-91) B		
(69-80) C		
(55-68) D	59	
(39-54) E		
(21-38) F		
(1-20) G		
Not energy efficient - higher running costs		
England & Wales	EU Directive 2002/91/EC	

Agents Note: Whilst every care has been taken to prepare these particulars, they are for guidance purposes only. All measurements are approximate and are for general guidance purposes only and whilst every care has been taken to ensure their accuracy, they should not be relied upon and potential buyers/tenants are advised to recheck the measurements

Goldman Greg
143 Leman Street
London
E1 8EY

02079770018
leads@goldmangreg.co.uk
www.goldmangreg.co.uk

