



EMPIRE SQUARE WEST, LONDON, SE1

£3,300 PCM

Goldman Greg are delighted to offer this two bedroom, two bathroom apartment located within Empire Square West.

The apartment benefits from two double bedrooms, two bathrooms, a modern fitted kitchen and bathroom and stunning views across London throughout through large glass windows,

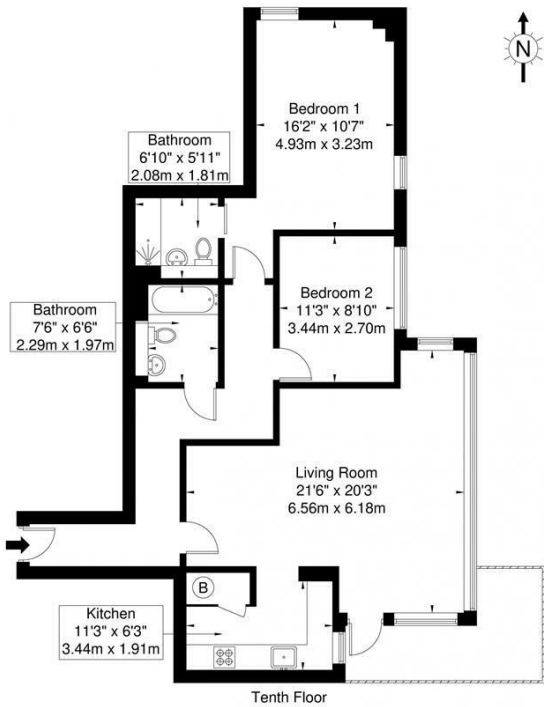
Empire Square West is conveniently located to a choice of stations within less than half a mile including Borough, London Bridge and Elephant and Castle (Bakerloo) Stations.



Goldman Greg

Empire Square West, London, SE1 4NL

Approx. Gross Internal Area = 89.5 sq m / 963 sq ft



Ref _____ Copyright THEBLÉUPLAN
Disclaimer : Floor plan measurements are approximate and are for illustrative purposes only
While we do not doubt the floor plan accuracy and completeness, you or your advisors should
conduct a careful, independent investigation of the property in respect of monetary valuation



Energy Efficiency Rating		
	Current	Potential
Very energy efficient - lower running costs		
(92 plus) A		
(81-91) B		
(69-80) C		
(55-68) D		
(39-54) E		
(21-38) F		
(1-20) G		
Not energy efficient - higher running costs		
England & Wales	EU Directive 2002/91/EC	

Agents Note: Whilst every care has been taken to prepare these particulars, they are for guidance purposes only. All measurements are approximate and are for general guidance purposes only and whilst every care has been taken to ensure their accuracy, they should not be relied upon and potential buyers/tenants are advised to recheck the measurements

Goldman Greg
143 Leman Street
London
E1 8EY

02079770018
leads@goldmangreg.co.uk
www.goldmangreg.co.uk

