

GARDNER COURT, BREWERY YARD, EC1V

£2,650 PCM

Goldman Greg are delighted to offer this modern one bedroom apartment to rent at Gardner Court on Brewery Yard.

The apartment is offered furnished and has a good sized double bedrooms, an open plan kitchen/living room, modern bathroom and Juliet balconies throughout.

The property is finished to a very high standard and is located just 5 minutes walk from Farringdon Station as well as lots of other local shops and amenities close by.

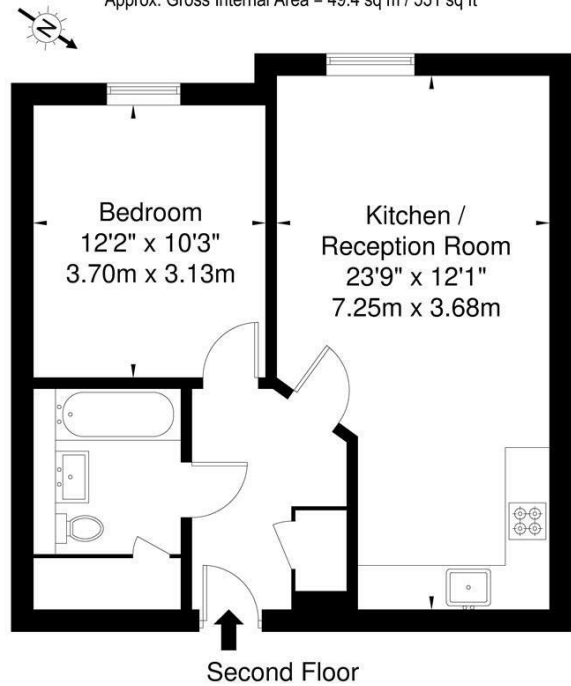
The building benefits from a lift and is fully secure with a 24 hour concierge on site.



Goldman Greg

Gardner Court Brewery Square EC1V 4JH

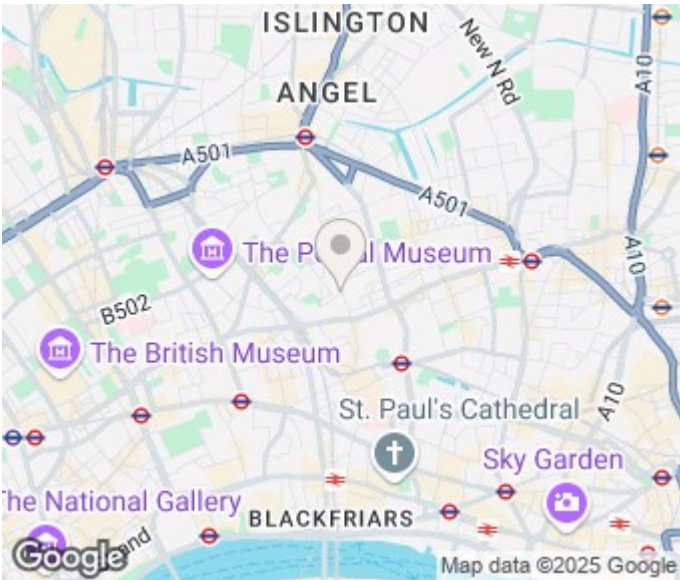
Approx. Gross Internal Area = 49.4 sq m / 531 sq ft



Ref Copyright B L E U P L A N

The Floor plan is not to scale and measurements and areas shown are approximate and therefore should be used for illustrative purposes only. The plan has been prepared in accordance with the RICS code of Measuring Practice and whilst we have confidence in the information produced it must not be relied on. If there is any aspect of particular importance, you should carry out or commission your own inspection of the property.

Copyright © BLEUPLAN



Energy Efficiency Rating		
	Current	Potential
Very energy efficient - lower running costs		
(92 plus) A		
(81-91) B	83	86
(69-80) C		
(55-68) D		
(39-54) E		
(21-38) F		
(1-20) G		
Not energy efficient - higher running costs		
England & Wales	EU Directive 2002/91/EC	

Agents Note: Whilst every care has been taken to prepare these particulars, they are for guidance purposes only. All measurements are approximate and are for general guidance purposes only and whilst every care has been taken to ensure their accuracy, they should not be relied upon and potential buyers/tenants are advised to recheck the measurements

Goldman Greg
143 Leman Street
London
E1 8EY

02079770018
leads@goldmangreg.co.uk
www.goldmangreg.co.uk

