



DEVON HOUSE, CHURCH HILL, WINCHMORE HILL,

£1,800

Nestled in the charming area of Winchmore Hill, London, this delightful office space at Devon House on Church Hill offers a unique opportunity for businesses seeking a professional environment. Spanning an impressive 493 square feet, this first-floor office is designed to provide ample room for productivity and creativity.

The office boasts a spacious layout, allowing for flexible arrangements to suit your business needs. Natural light floods the space, creating an inviting atmosphere that is conducive to both work and collaboration. Additionally, the presence of a kitchen enhances the functionality of the office, making it convenient for staff to prepare refreshments and meals throughout the day.

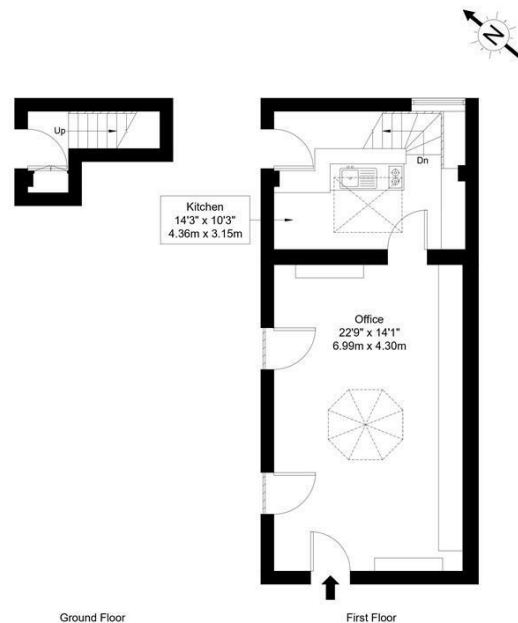
Located in a vibrant community, this property benefits from excellent transport links and local amenities, ensuring that your team and clients can easily access the office. The surrounding area is known for its pleasant surroundings, making it an ideal location for a thriving business.



Goldman Greg

Church Hill, N21 1LE

Approx Gross Internal Area = 45.76 sq m / 493 sq ft



Ref :

Copyright **BLEUPLAN**

The Floor plan is not to scale and measurements and areas shown are approximate and therefore should be used for illustrative purposes only. The plan has been prepared in accordance with the RICS code of Measuring Practice and whilst we have confidence in the information produced it must not be relied on. Maximum lengths and widths are represented on the floor plan. If there is any aspect of particular importance, you should carry out or commission your own inspection of the property.
Copyright @ BLEUPLAN



Energy Efficiency Rating		
	Current	Potential
Very energy efficient - lower running costs		
(92 plus) A		
(81-91) B		
(69-80) C		
(55-68) D		
(39-54) E		
(21-38) F		
(1-20) G		
Not energy efficient - higher running costs		
England & Wales	EU Directive 2002/91/EC	

Agents Note: Whilst every care has been taken to prepare these particulars, they are for guidance purposes only. All measurements are approximate and are for general guidance purposes only and whilst every care has been taken to ensure their accuracy, they should not be relied upon and potential buyers/tenants are advised to recheck the measurements

Goldman Greg
143 Leman Street
London
E1 8EY

02079770018
leads@goldmangreg.co.uk
www.goldmangreg.co.uk

