

CENTRE HEIGHTS, FINCHLEY ROAD, LONDON, NW3

£1,900 PCM

Goldman Greg are delighted to offer this smart one bedroom apartment featuring modern interiors throughout. Centre Heights is a lift and portered serviced building ideally located for the local amenities and transport links of Swiss Cottage and Finchley Road all within a very easy reach.

This immaculate home boasts the benefit of underfloor heating, bespoke fitted wardrobes, a fully integrated kitchen, a fully tiled bathroom with chrome fixtures and engineered oak flooring.

****Available now****

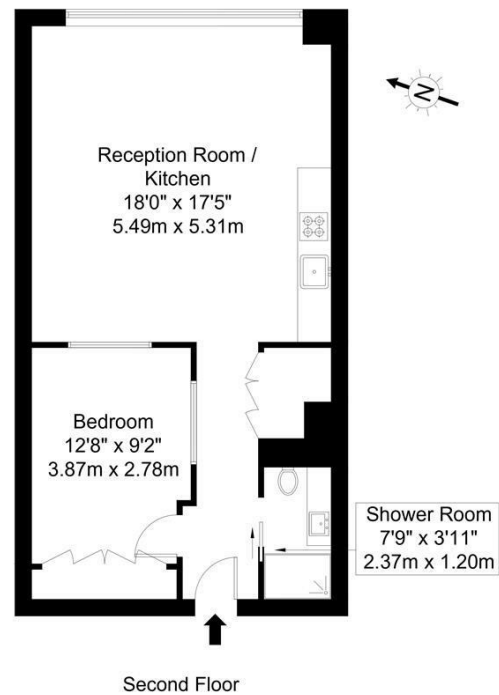
****Early viewings highly recommended.****



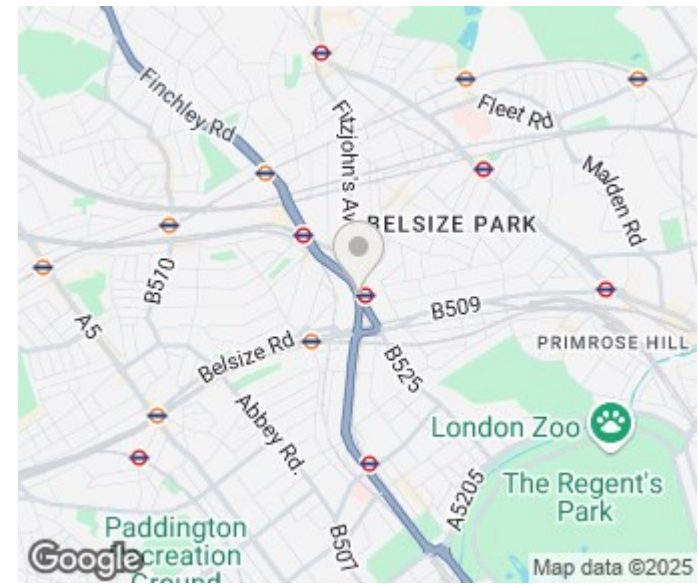
Goldman Greg

Finchley Road, NW3 6JG

Approx Gross Internal Area = 54.89 sq m / 591 sq ft



The Floor plan is not to scale and measurements and areas shown are approximate and therefore should be used for illustrative purposes only. The plan has been prepared in accordance with the RICS code of Measuring Practice and whilst we have confidence in the information produced it must not be relied on. Maximum lengths and widths are represented on the floor plan. If there is any aspect of particular importance, you should carry out or commission your own inspection of the property.
Copyright © BleuPlan



| Energy Efficiency Rating | | |
|---|----------------------------|-----------|
| | Current | Potential |
| Very energy efficient - lower running costs | | |
| (92 plus) A | | |
| (81-91) B | 85 | 85 |
| (69-80) C | | |
| (55-68) D | | |
| (39-54) E | | |
| (21-38) F | | |
| (1-20) G | | |
| Not energy efficient - higher running costs | | |
| England & Wales | EU Directive 2002/91/EC | |

Agents Note: Whilst every care has been taken to prepare these particulars, they are for guidance purposes only. All measurements are approximate and are for general guidance purposes only and whilst every care has been taken to ensure their accuracy, they should not be relied upon and potential buyers/tenants are advised to recheck the measurements

Goldman Greg
143 Leman Street
London
E1 8EY

02079770018
leads@goldmangreg.co.uk
www.goldmangreg.co.uk

