



CENTRE HEIGHTS, FINCHLEY ROAD, LONDON, NW3

£2,200 PER MONTH

* HOT WATER & HEATING INCLUDED *

Goldman Greg are delighted to offer this smart one bedroom apartment featuring modern interiors throughout. Centre Heights is a lift and portered serviced building ideally located for the local amenities and transport links of Swiss Cottage and Finchley Road all within a very easy reach.

This immaculate home boasts the benefit of underfloor heating, bespoke fitted wardrobes, a fully integrated kitchen, a fully tiled bathroom with chrome fixtures and engineered oak flooring.

Available from the beginning of November, early viewings are highly recommended!

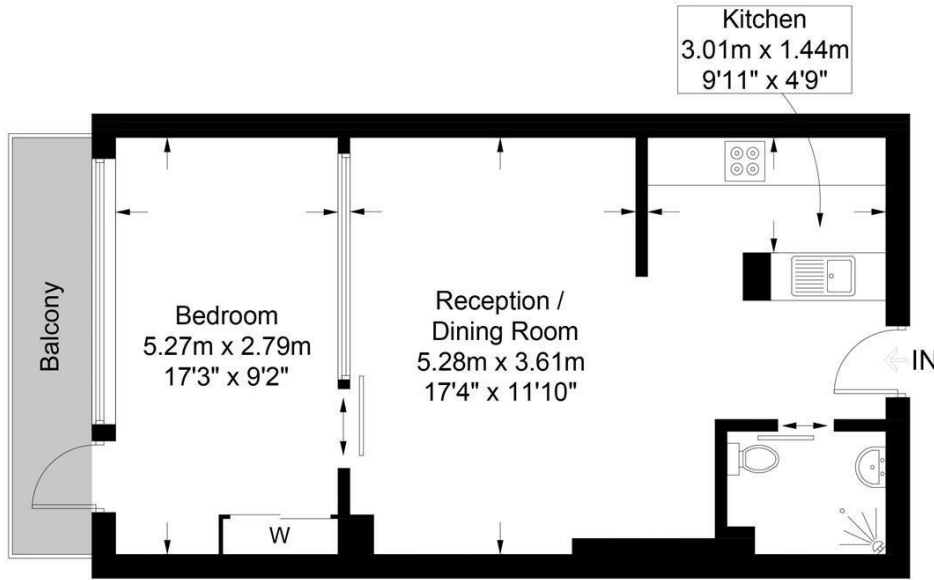


Goldman Greg



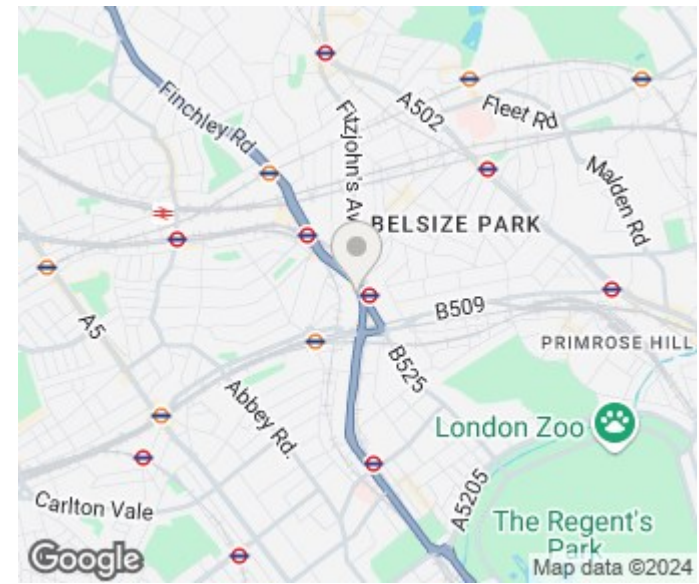
Center Heights, NW3

Approximate Gross Internal Area = 551 sq ft / 51.2 sq m



Eighth Floor

This plan is for layout guidance only. Not drawn to scale unless stated. Windows and door openings are approximate. Whilst every care is taken in the preparation of this plan, please check all dimensions, shapes and compass bearings before making any decisions reliant upon them. (ID673425)



Energy Efficiency Rating		Current	Potential
Very energy efficient - lower running costs			
(92 plus) A		84	
(81-91) B			
(69-80) C			
(55-68) D			
(39-54) E			
(21-38) F			
(1-20) G			
Not energy efficient - higher running costs			
England & Wales		EU Directive 2002/91/EC	

Agents Note: Whilst every care has been taken to prepare these particulars, they are for guidance purposes only. All measurements are approximate and are for general guidance purposes only and whilst every care has been taken to ensure their accuracy, they should not be relied upon and potential buyers/tenants are advised to recheck the measurements

Goldman Greg
143 Leman Street
London
E1 8EY

02079770018
leads@goldmangreg.co.uk
www.goldmangreg.co.uk

