



## STEPNEY GREEN, LONDON, E1

£1,895

Goldman Greg are delighted to present this bright and spacious one bedroom apartment located within an attractive period mansion block, offering plenty of character, high ceilings and a gated courtyard.

The apartment is located on the first floor and comprises a large reception room, period features including big sash windows, separate kitchen, double bedroom and shower room.

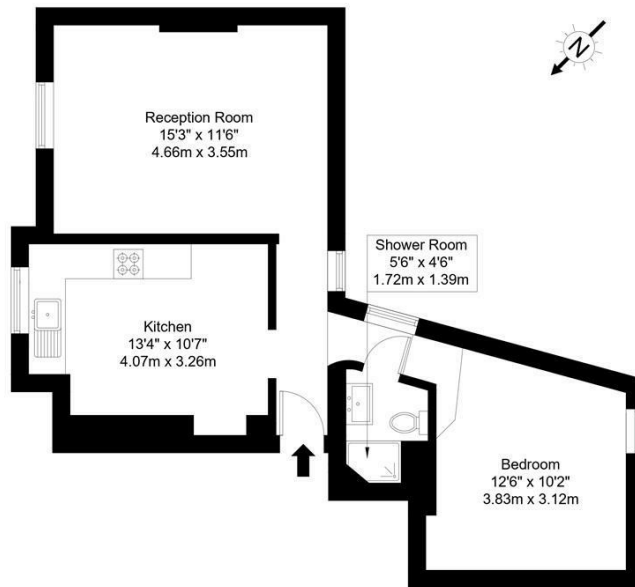
It is ideally situated near to Stepney Green tube station (Hammersmith & City and District lines), providing excellent access to the City and West End.



Goldman Greg

# Stepney Green, E1 3JH

Approx Gross Internal Area = 48.51 sq m / 522 sq ft

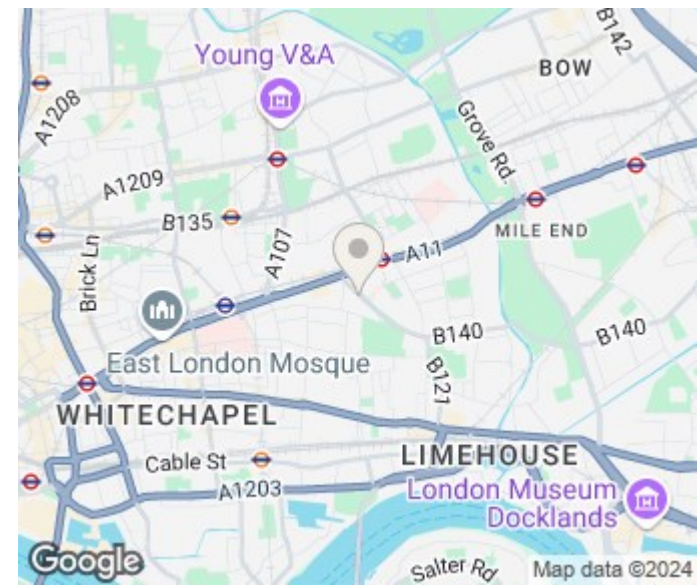


First Floor

Ref :

Copyright **BLEU PLAN**

The Floor plan is not to scale and measurements and areas shown are approximate and therefore should be used for illustrative purposes only. The plan has been prepared in accordance with the RICS code of Measuring Practice and whilst we have confidence in the information produced it must not be relied on. If there is any aspect of particular importance, you should carry out or commission your own inspection of the property.  
Copyright @ BLEUPLAN



Energy Efficiency Rating		Current	Potential
Very energy efficient - lower running costs			
(92 plus) <b>A</b>			
(81-91) <b>B</b>			
(69-80) <b>C</b>			
(55-68) <b>D</b>			
(39-54) <b>E</b>			
(21-38) <b>F</b>			
(1-20) <b>G</b>			
Not energy efficient - higher running costs			
<b>England &amp; Wales</b>		EU Directive 2002/91/EC	

Agents Note: Whilst every care has been taken to prepare these particulars, they are for guidance purposes only. All measurements are approximate and are for general guidance purposes only and whilst every care has been taken to ensure their accuracy, they should not be relied upon and potential buyers/tenants are advised to recheck the measurements

Goldman Greg  
143 Leman Street  
London  
E1 8EY

02079770018  
leads@goldmangreg.co.uk  
www.goldmangreg.co.uk

