



## CENTRE HEIGHTS, FINCHLEY ROAD, LONDON, NW3

£7,500 PCM

\* VIRTUAL TOUR AVAILABLE \* Goldman Greg are delighted to offer this newly refurbished three bedroom, three bathroom penthouse apartment located in the very heart of Swiss Cottage and is ideally located for the amenities of Finchley Road and transport links of Swiss Cottage on the Jubilee Line.

The property benefits from wooden flooring throughout, direct access to a roof terrace, private balconies and a high specification kitchen fitted with state of the art appliances.

This apartment is offered on an unfurnished basis.

Further benefits of Centre Heights also include an on-site concierge, secure telephone entry system and bike storage.

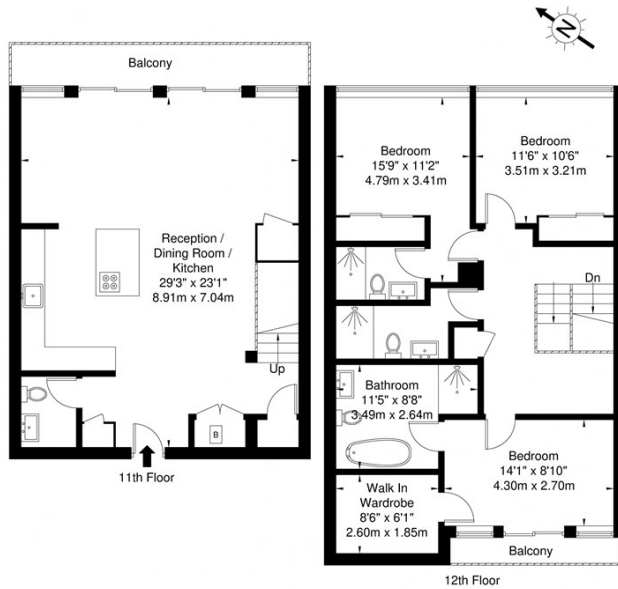
Available from mid October 2024, early viewings are highly recommend to fully appreciate this property.



Goldman Greg

# Centre Heights, Finchley Road, NW3 6JG

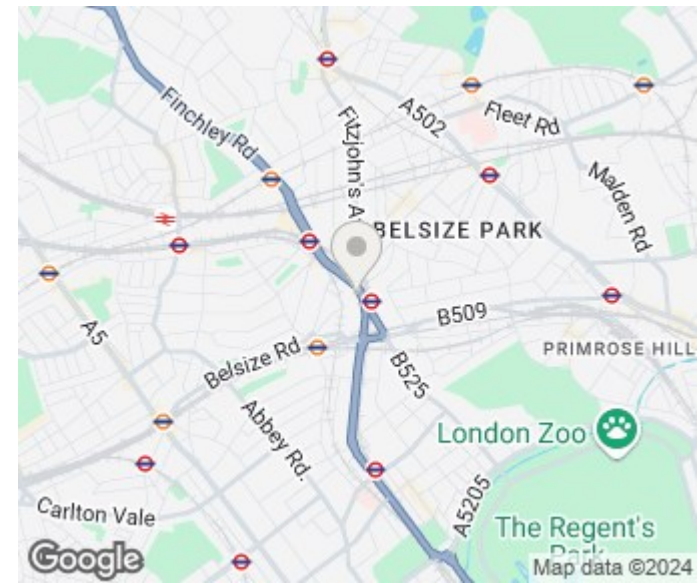
Approx. Gross Internal Area = 141.4 sq m / 1522 sq ft



Ref

Copyright **BLEU PLAN**

The Floor plan is not to scale and measurements and areas shown are approximate and therefore should be used for illustrative purposes only. The plan has been prepared in accordance with the RICS code of Measuring Practice and whilst we have confidence in the information produced it must not be relied on. If there is any aspect of particular importance, you should carry out or commission your own inspection of the property.  
Copyright © BLEUPLAN



Energy Efficiency Rating		Current	Potential
Very energy efficient - lower running costs			
(92 plus) <b>A</b>		89	89
(81-91) <b>B</b>			
(69-80) <b>C</b>			
(55-68) <b>D</b>			
(39-54) <b>E</b>			
(21-38) <b>F</b>			
(1-20) <b>G</b>			
Not energy efficient - higher running costs			
<b>England &amp; Wales</b>		EU Directive 2002/91/EC	

Agents Note: Whilst every care has been taken to prepare these particulars, they are for guidance purposes only. All measurements are approximate and are for general guidance purposes only and whilst every care has been taken to ensure their accuracy, they should not be relied upon and potential buyers/tenants are advised to recheck the measurements

Goldman Greg  
143 Leman Street  
London  
E1 8EY

02079770018  
leads@goldmangreg.co.uk  
www.goldmangreg.co.uk

