



## TREATY STREET, LONDON, N1

£3,500 PER CALENDAR

\* THREE DOUBLE BEDROOMS, NO LOUNGE \* Goldman Greg are delighted to offer this three bedroom third floor apartment located on Treaty Street in Kings Cross, N1.

The apartment benefits from three good size double bedrooms, eat in kitchen with white goods, Gas Central Heating and a clean bathroom.

Treaty Street is well connected to Kings Cross, Angel, Islington, Euston and surrounding areas making this ideal for students or sharers needing access in and out of the City.

Offered on a furnished basis and available from the 16th September 2024, early viewings are highly recommended.

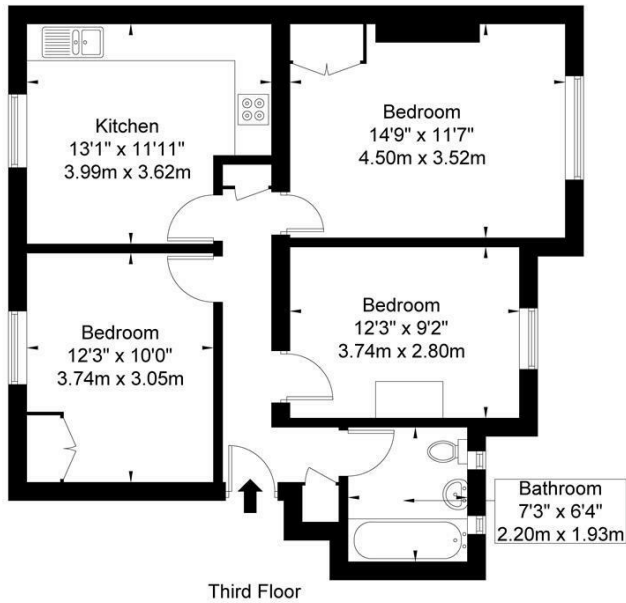
\* VIRTUAL TOUR AVAILABLE \*



Goldman Greg

# Treaty Street N1 0TB

Approx. Gross Internal Area = 65.1 sq m / 700 sq ft



Ref

Copyright **BLEU PLAN**

The Floor plan is not to scale and measurements and areas shown are approximate and therefore should be used for illustrative purposes only. The plan has been prepared in accordance with the RICS code of Measuring Practice and whilst we have confidence in the information produced it must not be relied on. If there is any aspect of particular importance, you should carry out or commission your own inspection of the property.  
Copyright © BLEUPLAN



Energy Efficiency Rating		Current	Potential
Very energy efficient - lower running costs			
(92 plus) <b>A</b>			
(81-91) <b>B</b>			
(69-80) <b>C</b>			
(55-68) <b>D</b>		57	66
(39-54) <b>E</b>			
(21-38) <b>F</b>			
(1-20) <b>G</b>			
Not energy efficient - higher running costs			
<b>England &amp; Wales</b>	EU Directive 2002/91/EC		

Agents Note: Whilst every care has been taken to prepare these particulars, they are for guidance purposes only. All measurements are approximate and are for general guidance purposes only and whilst every care has been taken to ensure their accuracy, they should not be relied upon and potential buyers/tenants are advised to recheck the measurements

Goldman Greg  
143 Leman Street  
London  
E1 8EY

02079770018  
leads@goldmangreg.co.uk  
www.goldmangreg.co.uk

