



PORTER ROAD, LONDON, E6

£3,300 PER MONTH

Goldman Greg are delighted to present this five bedroom HMO mid terrace house in Beckton.

The house is comprised of a spacious living/dining area, separate fitted kitchen and WC on the ground floor, three double bedrooms and a shower room on the first floor, two double bedrooms and a large bathroom on the second floor. There is also a large enclosed rear garden, perfect for enjoying the summer months.

Located in the popular area of Beckton, the property is close to a number of amenities, including supermarkets, shops, restaurants and pubs. Transport connections can be found from the A13, A1020, Beckton, Beckton Park and Cyprus DLR stops with tube links from East Ham station, rail interchange from Barking station and Elizabeth line connections from Custom House for ExCel station.

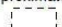
Perfect for sharers!

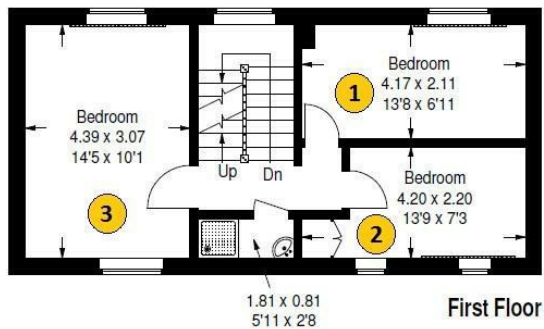
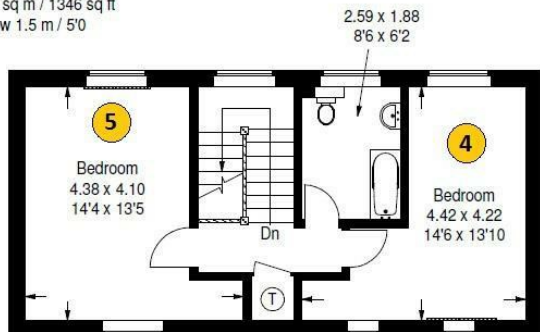
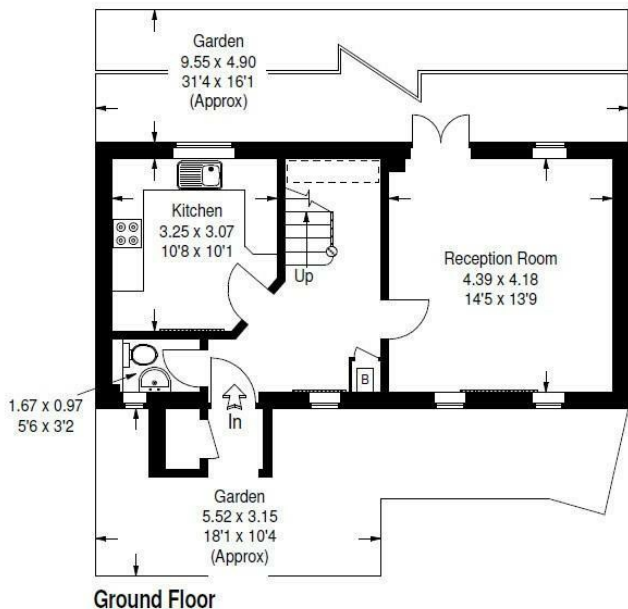



Goldman Greg

Porter Road, E6

Approximate Gross Internal Area :- 125 sq m / 1346 sq ft

 = Reduced headroom below 1.5 m / 5'0"



Energy Efficiency Rating		Current	Potential
Very energy efficient - lower running costs			
(92 plus) A			
(81-91) B			
(69-80) C			
(55-68) D			
(39-54) E			
(21-38) F			
(1-20) G			
Not energy efficient - higher running costs			
England & Wales		EU Directive 2002/91/EC	
		72	83

Agents Note: Whilst every care has been taken to prepare these particulars, they are for guidance purposes only. All measurements are approximate and are for general guidance purposes only and whilst every care has been taken to ensure their accuracy, they should not be relied upon and potential buyers/tenants are advised to recheck the measurements

Goldman Greg
143 Leman Street
London
E1 8EY

02079770018
leads@goldmangreg.co.uk
www.goldmangreg.co.uk

