



WELL STREET, LONDON, E9

£2,100 PCM

* VIRTUAL TOUR AVAILABLE * Goldman Greg are delighted to offer this well presented two double bedroom apartment located on Well Street, Hackney, E9.

This property has two large double bedrooms, a separate kitchen, wood floors and private balcony.

Great location within easy reach of London Fields, Broadway Market and Hackney Central.

Available from the 5th July 2024.

Offered on an unfurnished basis, early viewings are highly recommended.



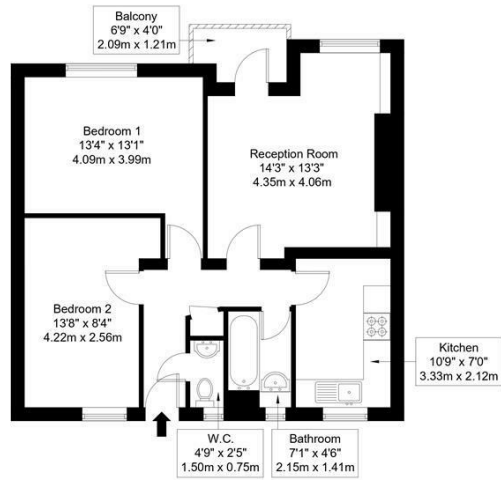
Goldman Greg

Well Street, E9 7NU

Approx Gross Internal Area = 60.63 sq m / 653 sq ft

Balcony = 2.31 sq m / 25 sq ft

Total = 62.94 sq m / 677 m sq ft

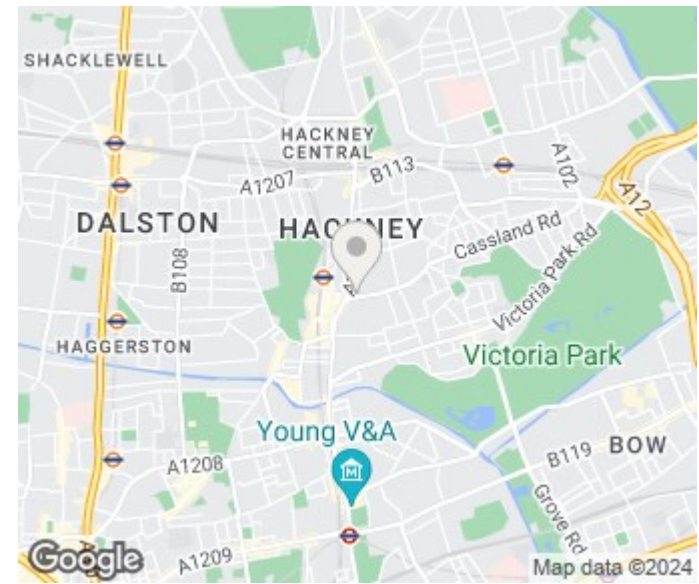


Second Floor

Ref :

Copyright **BLEU PLAN**

The Floor plan is not to scale and measurements and areas shown are approximate and therefore should be used for illustrative purposes only. The plan has been prepared in accordance with the RICS code of Measuring Practice and whilst we have confidence in the information produced it must not be relied on. Maximum lengths and widths are represented on the floor plan. If there is any aspect of particular importance, you should carry out or commission your own inspection of the property.
Copyright @ BLEUPLAN



| Energy Efficiency Rating | | Current | Potential |
|---|--|-------------------------|-----------|
| Very energy efficient - lower running costs | | | |
| (92 plus) A | | | |
| (81-91) B | | 80 | 82 |
| (69-80) C | | | |
| (55-68) D | | | |
| (39-54) E | | | |
| (21-38) F | | | |
| (1-20) G | | | |
| Not energy efficient - higher running costs | | | |
| England & Wales | | EU Directive 2002/91/EC | |

Agents Note: Whilst every care has been taken to prepare these particulars, they are for guidance purposes only. All measurements are approximate and are for general guidance purposes only and whilst every care has been taken to ensure their accuracy, they should not be relied upon and potential buyers/tenants are advised to recheck the measurements

Goldman Greg
143 Leman Street
London
E1 8EY

02079770018
leads@goldmangreg.co.uk
www.goldmangreg.co.uk

