



## MACKLIN STREET, LONDON, WC2B

£2,300 PCM

\* VIRTUAL TOUR AVAILABLE \* INCLUDES ELECTRICITY AND WATER \* Goldman Greg are proud to present to market this newly refurbished stunning one bedroom ground-floor apartment situated in the heart of WC2.

The property includes electricity and water within the rental price, and is suitable for a professional couple or single.

With an abundance of transport links and amenities on your doorstep you'll find every possible need catered to.

Register your interest early to avoid disappointment.

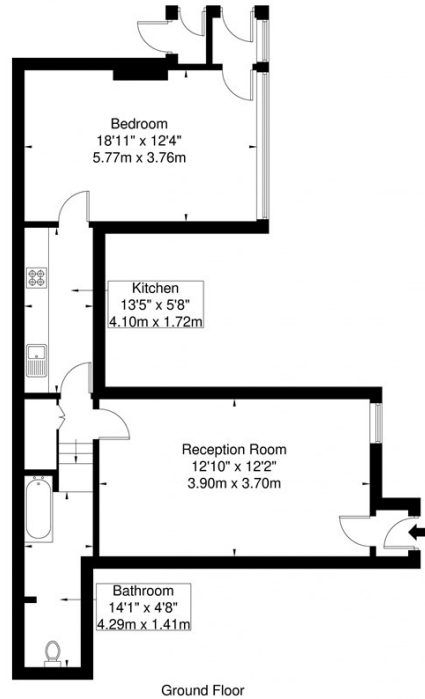
Available from the 29th June 2024.



Goldman Greg

# Macklin Street, WC2B 5NF

Approx. Gross Internal Area = 69.8 sq m / 751 sq ft



Ref

Ground Floor

Copyright **BLEU PLAN**

Disclaimer : Floor plan measurements are approximate and are for illustrative purposes only. While we do not doubt the floor plan accuracy and completeness, you or your advisors should conduct a careful, independent investigation of the property in respect of monetary valuation



Energy Efficiency Rating		
	Current	Potential
Very energy efficient - lower running costs		
(92 plus) <b>A</b>		
(81-91) <b>B</b>		<b>81</b>
(69-80) <b>C</b>		
(55-68) <b>D</b>	<b>58</b>	
(39-54) <b>E</b>		
(21-38) <b>F</b>		
(1-20) <b>G</b>		
Not energy efficient - higher running costs		
<b>England &amp; Wales</b>	EU Directive 2002/91/EC	

Agents Note: Whilst every care has been taken to prepare these particulars, they are for guidance purposes only. All measurements are approximate and are for general guidance purposes only and whilst every care has been taken to ensure their accuracy, they should not be relied upon and potential buyers/tenants are advised to recheck the measurements

Goldman Greg  
143 Leman Street  
London  
E1 8EY

02079770018  
leads@goldmangreg.co.uk  
www.goldmangreg.co.uk

