



TOWER HOUSE, LEWISHAM HIGH STREET, LONDON, £1,500 PER CALENDAR

* VIRTUAL TOUR AVAILABLE * Situated in the vibrant, sought after borough of Lewisham is this well presented second floor one bedroom apartment.

The property benefits a modern kitchen with integrated appliances which is open plan to the bright and spacious living area, double bedroom, and a large tiled bathroom which you can access from both the hallway and bedroom.

The property offers fantastic transport with direct links to Canary Wharf, London Bridge, Charing Cross, and Victoria.

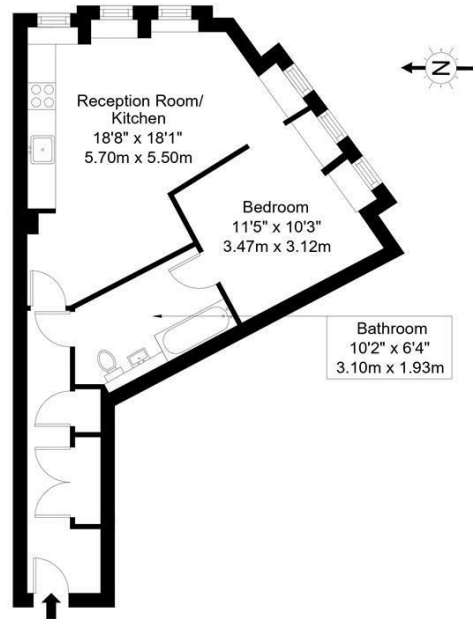
Available 7th June 2024.



Goldman Greg

Tower House, SE13 5JX

Approx Gross Internal Area = 50.88 sq m / 547 sq ft

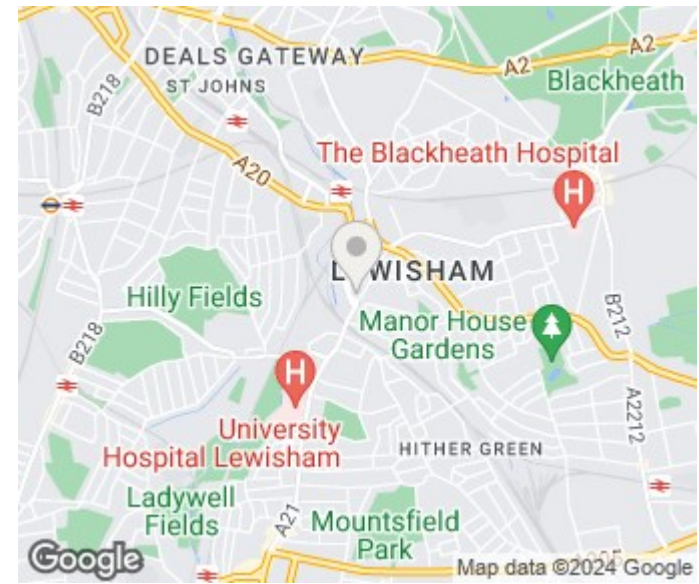


Second Floor

Ref :

Copyright **BLEU PLAN**

The Floor plan is not to scale and measurements and areas shown are approximate and therefore should be used for illustrative purposes only. The plan has been prepared in accordance with the RICS code of Measuring Practice and whilst we have confidence in the information produced it must not be relied on. If there is any aspect of particular importance, you should carry out or commission your own inspection of the property.
Copyright @ BLEUPLAN



Energy Efficiency Rating		
	Current	Potential
Very energy efficient - lower running costs		
(92 plus) A		
(81-91) B	78	78
(69-80) C		
(55-68) D		
(39-54) E		
(21-38) F		
(1-20) G		
Not energy efficient - higher running costs		
England & Wales	EU Directive 2002/91/EC	

Agents Note: Whilst every care has been taken to prepare these particulars, they are for guidance purposes only. All measurements are approximate and are for general guidance purposes only and whilst every care has been taken to ensure their accuracy, they should not be relied upon and potential buyers/tenants are advised to recheck the measurements

Goldman Greg
143 Lemn Street
London
E1 8EY

02079770018
leads@goldmangreg.co.uk
www.goldmangreg.co.uk

