

Shared Ownership

---

---

# Hampton Tower

at

# SQP

LONDON E14

---

---

Studio, 1 & 2 bedroom apartments  
Floorplans & Specification

## This is Hampton Tower

Already an icon, Hampton Tower is a modern landmark development designed by world leading architects Foster + Partners and developed by the trusted Berkeley Group.

Legal & General Affordable Homes is offering a unique opportunity to purchase an apartment through Shared Ownership, giving you a rare chance to invest in prime London, and to own a home in one of the most desirable and conveniently located places in the city.



# It's all in the detail

Attention to detail makes all the difference between good and great. That's why the fixtures and fittings in your apartment have been carefully chosen to be of high standard and taste, both contemporary and timeless

## Kitchen

- Handle-less white matt lacquered kitchens with Silestone composite stone work surfaces in grey
- Stainless steel under-mounted sink with brushed steel mixer tap
- Recessed under-unit lighting to wall cabinets
- Bosch electric oven and ceramic hob
- Grey glass upstands
- Bosch integrated fridge/freezer and dishwasher
- Elica telescopic cooker hood
- Integrated recycling bins

## Bathroom

- Contemporary Vitra white sanitaryware with wall-hung toilet, soft-close seat and semi-recessed basin with composite vanity top
- White bath with bath filler and Vado concealed thermostatic bath/shower mixer and glass shower screen
- Vado chrome mixer tap to basin
- Porcelain full-height wall tiling to bath and shower area with feature tiling to vanity area.
- Chrome heated towel rail
- Chrome toilet roll holder and robe hook
- Recessed cabinet with mirrored doors, shaver socket, and glass shelves

## Flooring

- Engineered flooring to hall, kitchen, dining area and living area
- Porcelain floor tiles to bathroom
- Luxury twist-pile grey carpet to bedrooms

## General

- Free-standing washer/dryer to utility cupboard in hall
- Sprinkler system to each apartment, serviced bi-annually within service charge
- Aluminium framed full-height windows with sliding door panels to living area with glass balustrade externally
- Walls and ceilings painted matt white
- Architraves and skirtings painted satin white
- Walnut wood veneer entrance door, frame and architrave, bespoke door lever with leather inset, chrome letterplate and numerals
- Flush white internal doors with lever on rose chrome door furniture
- Underfloor heating via communal heating plant
- Comfort cooling to habitable rooms
- Wardrobe with matt white doors to master bedroom
- NHBC 12 year warranty and 2 year Berkeley Homes warranty

## Electrical

- Video entry system with handset to hall
- White LED downlights to hall, kitchen, dining area, living area, bedrooms and bathroom
- White slimline sockets and switches throughout except kitchen
- Brushed stainless steel sockets to kitchen worktop
- Media point to living area containing two plug sockets, TV socket, telephone socket, digital extension and FM socket.
- HD digital connectivity to Virgin and/or Sky
- Telephone/data points to living area and bedrooms
- Smoke detector and heat detectors
- Mechanical, ventilation and heat recovery system (MVHR).
- Heating and hot water supplied by Heat Interface Unit (HIU) and individually metered and billed.
- Shaver socket to bathroom set within cabinet

## Communal Areas

- Communal lobby with seating area and 24-hour concierge service
- Six lifts with two fire lifts
- Carpet and perimeter floor tiles to lift lobby and carpet to corridors with recessed feature lighting to ceiling.
- Landscaped gardens at ground level
- Cycle storage in basement

Specification correct at time of print, but is subject to change without notice. Unless specifically incorporated in writing into the sales contract the specification is not intended to form part of any contract or warranty.



# Siteplan

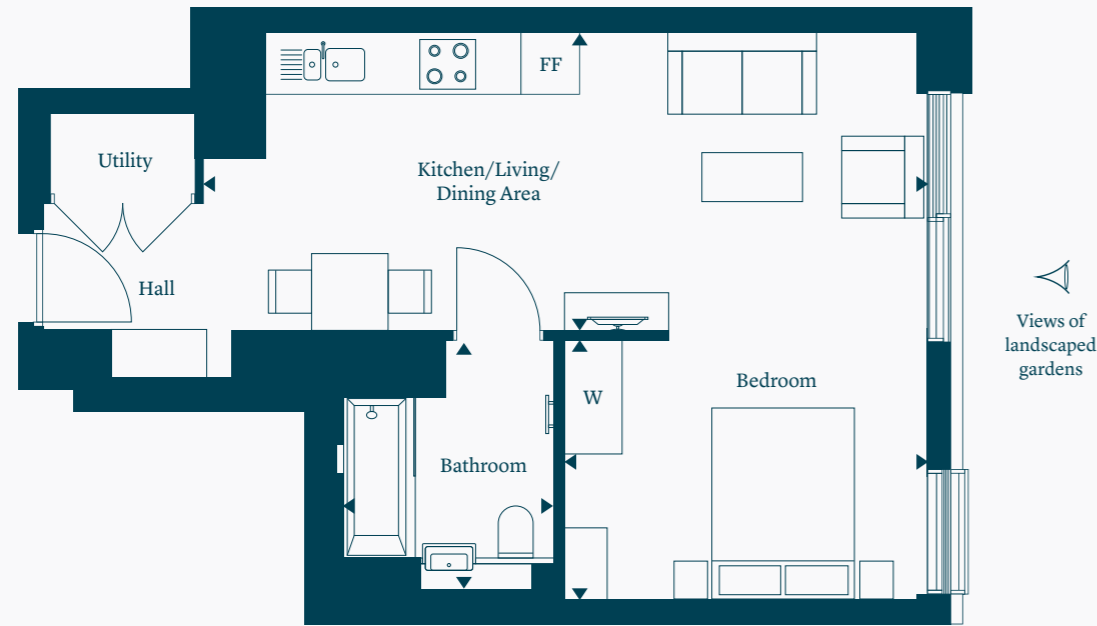


# Type 01

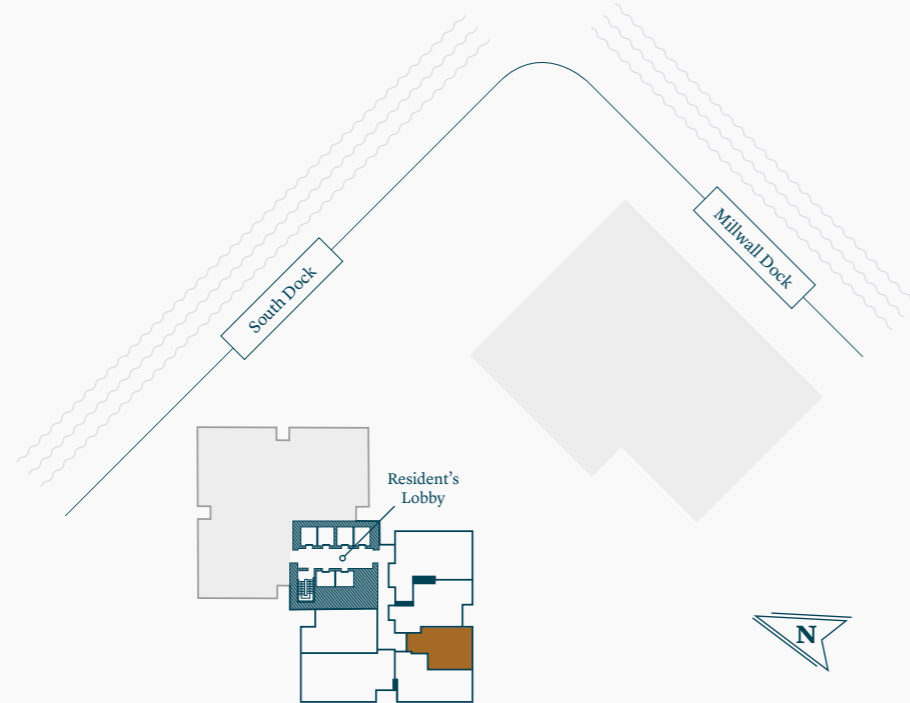
## Studio apartment

Floors 02-14  
 Plots 2.03, 3.03, 4.03, 5.03, 6.03, 7.03, 8.03,  
 9.03, 10.03, 11.03, 12.03, 13.03 & 14.03

Kitchen/Living/Dining Area	7.56m x 3.12m	24'8" x 10'2"
Bedroom	3.80m x 2.72m	12'5" x 8'11"
Bathroom	2.22m x 2.01m	7'3" x 6'7"



FF - Fridge/Freezer  
 W - Wardrobe



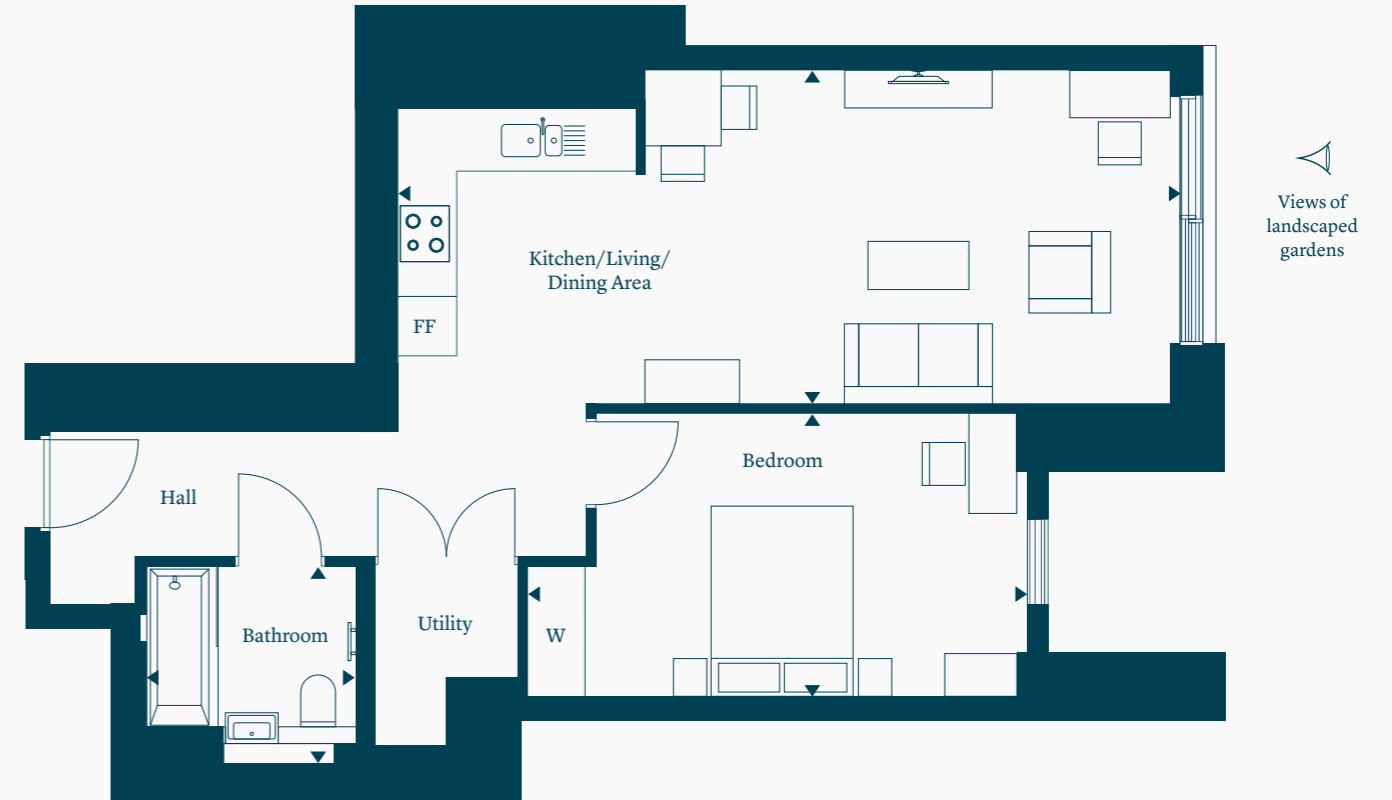
Total Area - 44.65 m<sup>2</sup> / 481 sq.ft

# Type 01

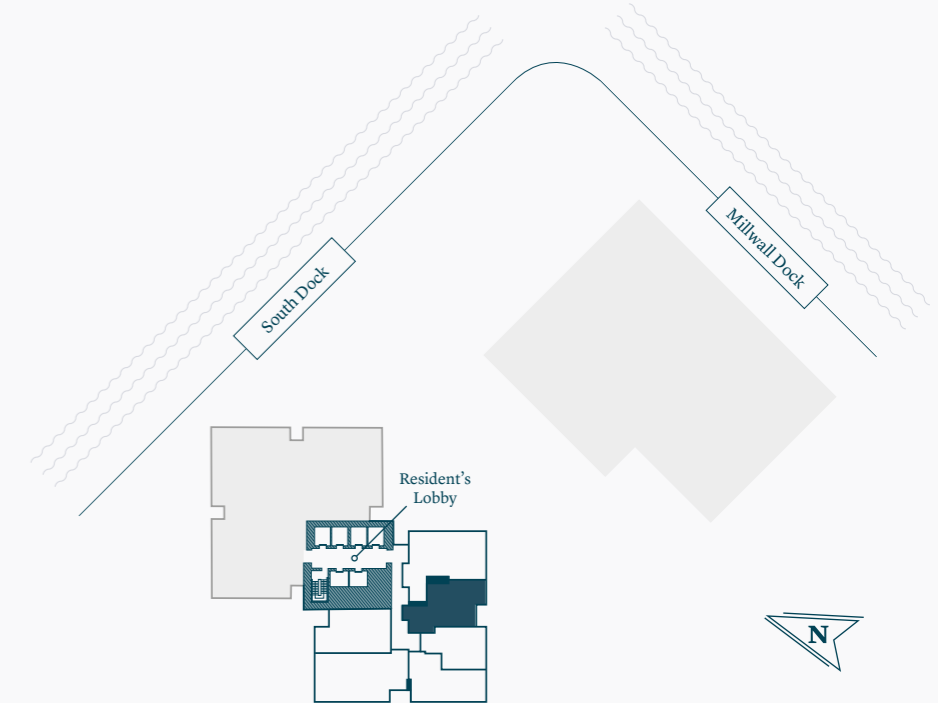
## 1 bedroom apartment

Floors 02-14  
 Plots 2.02, 3.02, 4.02, 5.02, 6.02, 7.02, 8.02,  
 9.02, 10.02, 11.02, 12.02, 13.02 & 14.02

Kitchen/Living/Dining Area	7.51m x 3.51m	24'6" x 11'6"
Bedroom	4.52m x 2.98m	14'10" x 9'9"
Bathroom	2.19m x 1.68m	7'2" x 5'6"



FF - Fridge/Freezer  
 W - Wardrobe



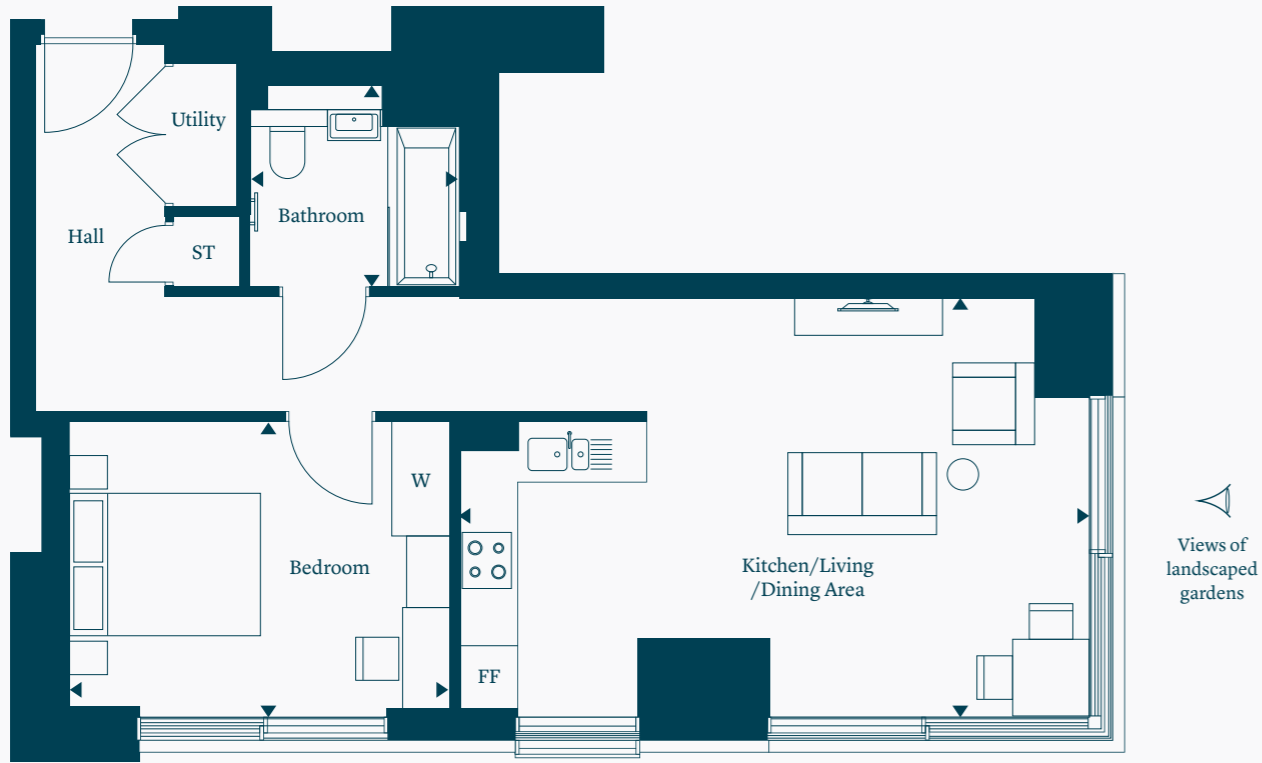
The floor plans provided are intended to only give a general indication of the proposed floor lay out and are not drawn to scale. Measurements are given to the widest point, are approximate and are given as a guide only. Unless specifically incorporated in writing into the sales contract the specification is not intended to form part of any contract or warranty

# Type 02

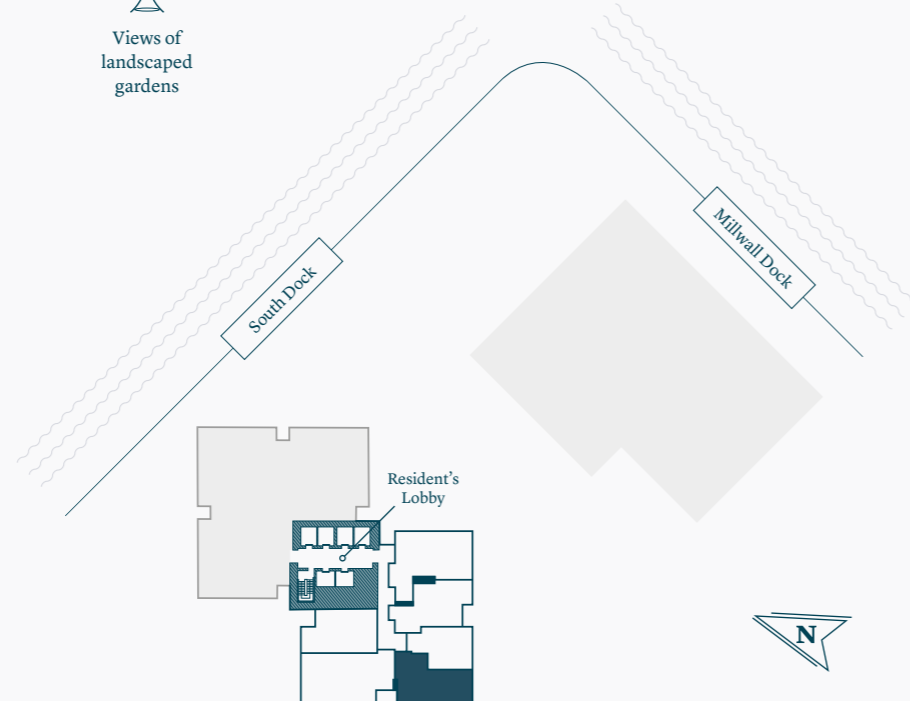
## 1 bedroom apartment

Floors 02-14  
Plots 2.04, 3.04, 4.04, 5.04, 6.04, 7.04, 8.04,  
9.04, 10.04, 11.04, 12.04, 13.04 & 14.04

Kitchen/Living/Dining Area	6.58m x 4.39m	21'3" x 14'5"
Bedroom	4.00m x 3.09m	13'1" x 10'1"
Bathroom	2.22m x 2.12m	7'3" x 6'11"



Views of landscaped gardens



FF - Fridge/Freezer  
ST - Storage  
W - Wardrobe

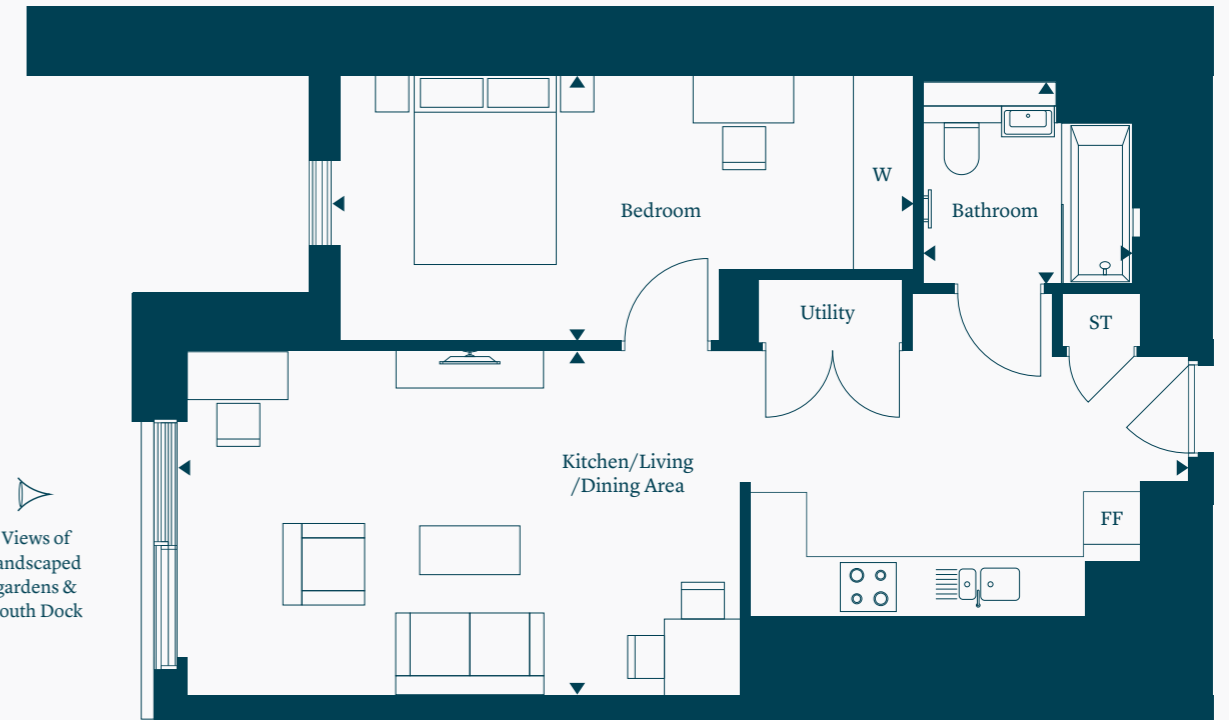
Total Area - 56.86 m<sup>2</sup> / 612 sq.ft

# Type 03

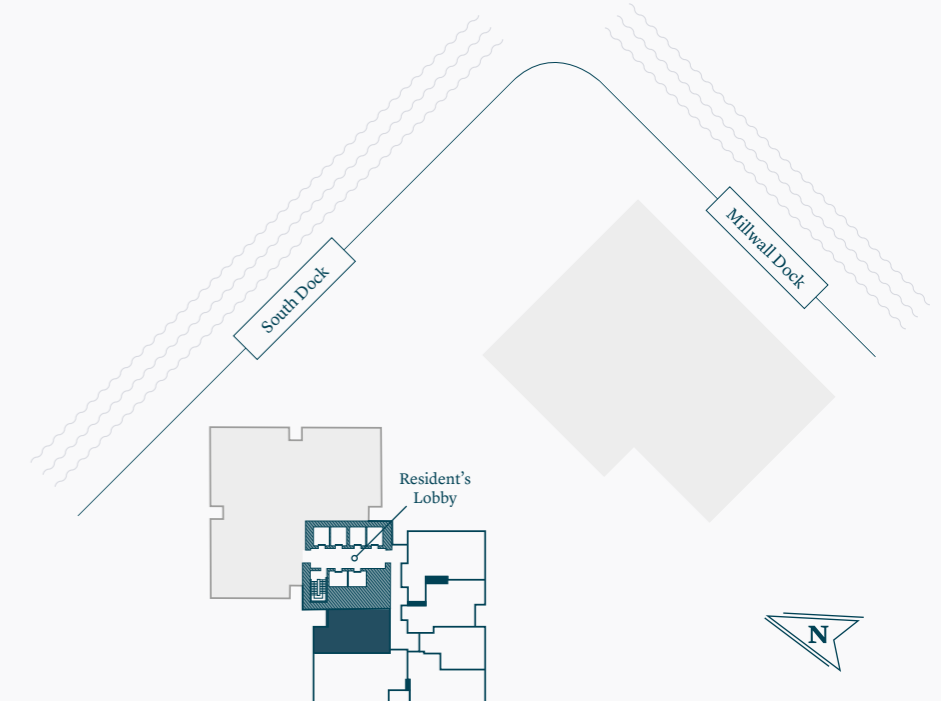
## 1 bedroom apartment

Floors 02-14  
Plots 2.06, 3.06, 4.06, 5.06, 6.06, 7.06, 8.06,  
9.06, 10.06, 11.06, 12.06, 13.06 & 14.06

Kitchen/Living/Dining Area	8.81m x 3.61m	28'9" x 11'10"
Bedroom	6.12m x 2.80m	20'0" x 9'2"
Bathroom	2.22m x 2.12m	7'3" x 6'11"



Views of landscaped gardens & South Dock



FF - Fridge/Freezer  
ST - Storage  
W - Wardrobe

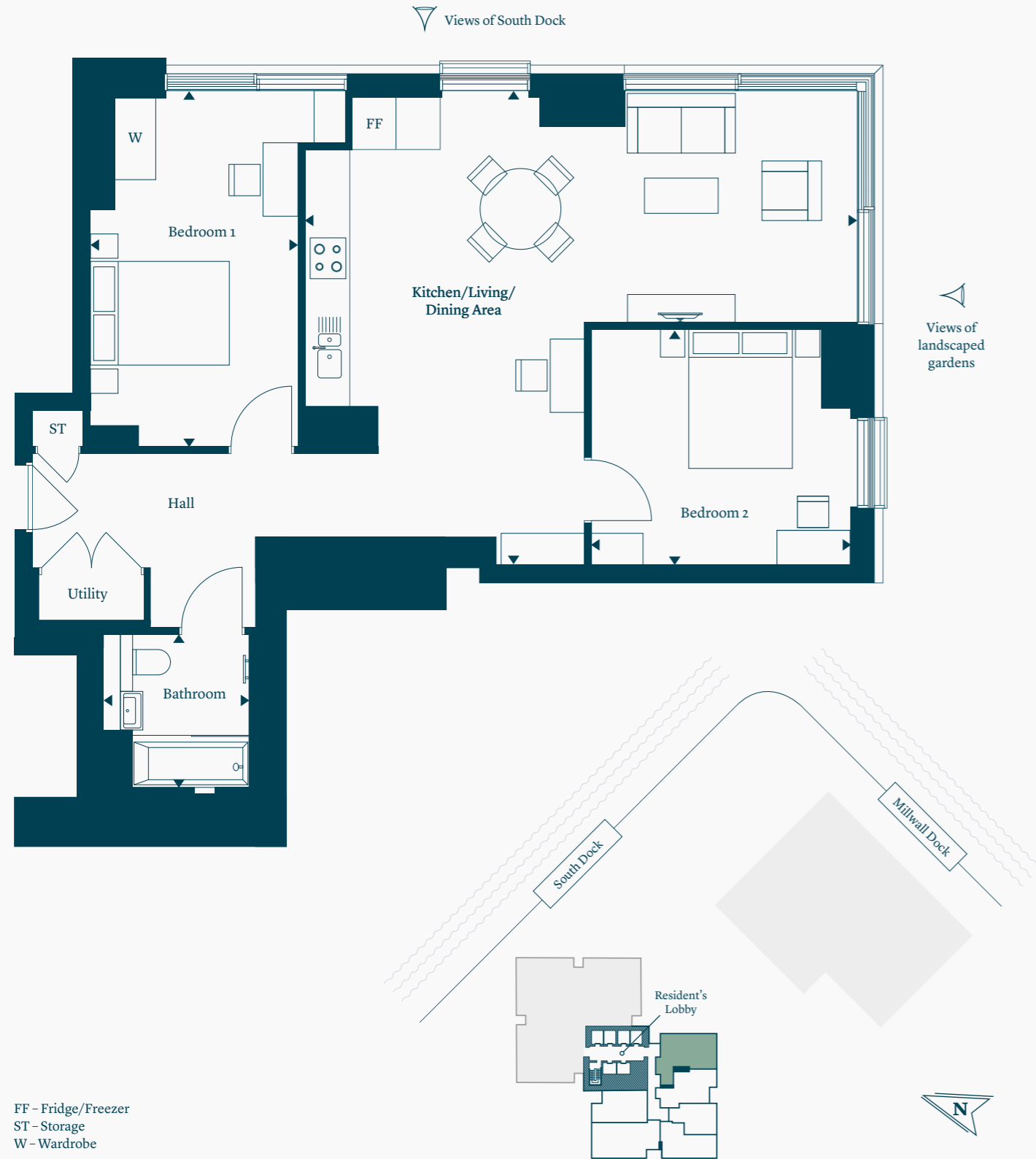
# Type 01

Total Area - 82.15 m<sup>2</sup> / 884 sq.ft

## 2 bedroom apartment

Floors 02-14  
Plots 2.01, 3.01, 4.01, 5.01, 6.01, 7.01, 8.01,  
9.01, 10.01, 11.01, 12.01, 13.01 & 14.01

Kitchen/Living/Dining Area	7.30m x 6.82m	23'11" x 22'4"	Bedroom 2	3.83m x 3.38m	12'6" x 11'1"
Bedroom 1	5.12m x 2.90m	16'9" x 9'9"	Bathroom	2.22m x 2.12m	7'3" x 6'11"



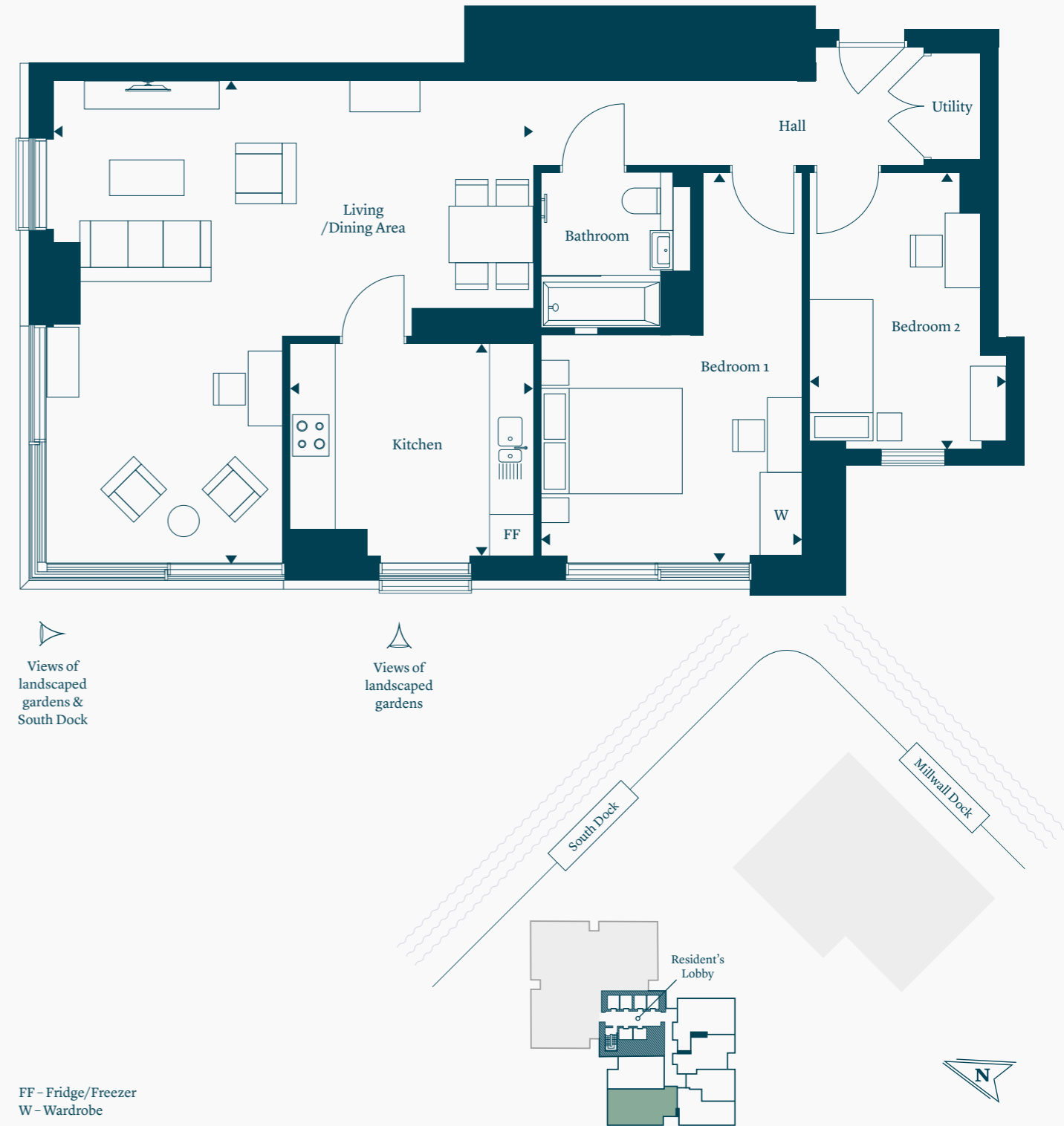
# Type 02

Total Area - 85.92 m<sup>2</sup> / 925 sq.ft

## 2 bedroom apartment

Floors 02-14  
Plots 2.05, 3.05, 4.05, 5.05, 6.05, 7.05, 8.05,  
9.05, 10.05, 11.05, 12.05, 13.05 & 14.05

Kitchen	3.45m x 3.01m	11'4" x 9'10"	Bedroom 2	3.91m x 2.42m	12'9" x 7'11"
Living/Dining Area	6.89m x 6.82m	22'7" x 22'4"	Bathroom	2.22m x 2.12m	7'3" x 6'11"
Bedroom 1	5.52m x 3.59m	18'0" x 11'9"			



The floor plans provided are intended to only give a general indication of the proposed floor lay out and are not drawn to scale. Measurements are given to the widest point, are approximate and are given as a guide only. Unless specifically incorporated in writing into the sales contract the specification is not intended to form part of any contract or warranty

**Hampton Tower at SQP**

Apartment 302, Hampton Tower,  
75 Marsh Wall, London, E14 9WS

0344 892 0121

Email: [sqp@landgah.com](mailto:sqp@landgah.com)

[www.landgah.com/sqp](http://www.landgah.com/sqp)



**Afford. Live. Love.**