



FINE & COUNTRY

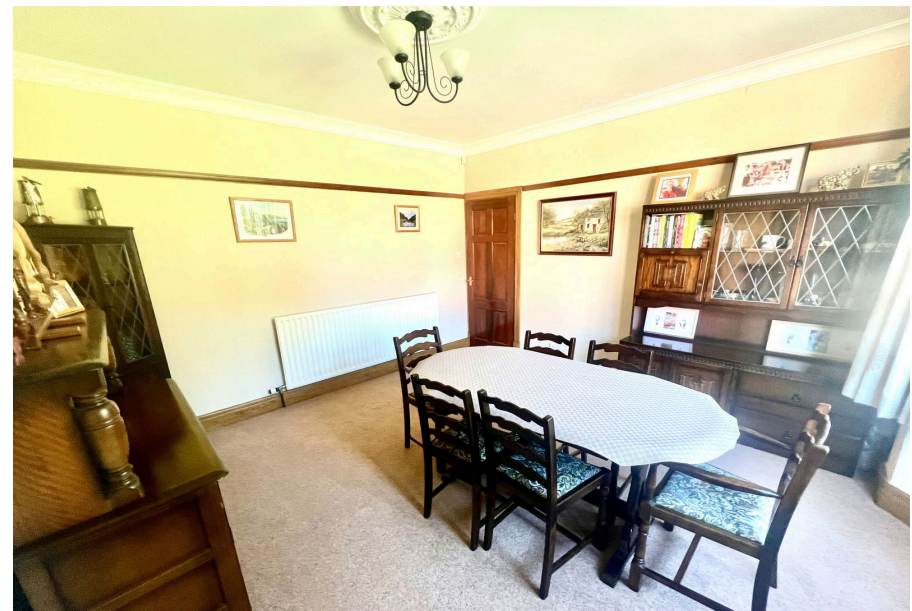
Greenside Lane, Hoyland, Barnsley, S74 9PZ

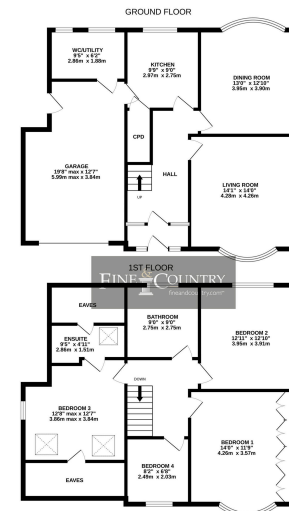
Offers Over £500,000

4 2 2



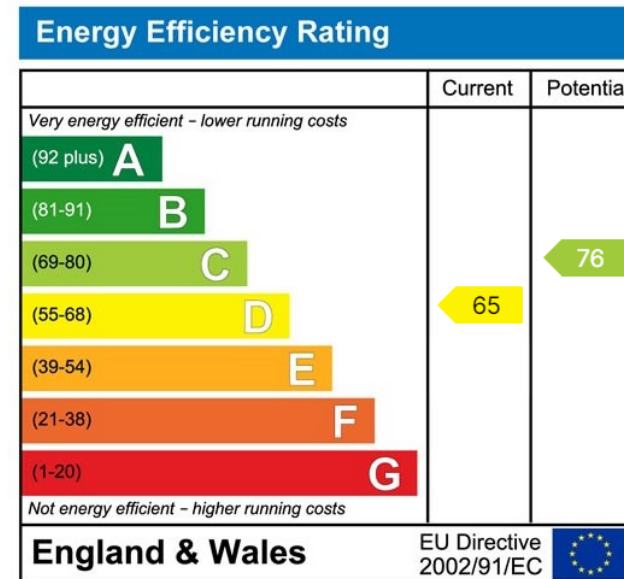
- House & Building Plot (subject to planning)
- Individually Designed 4 Bedroom Home
- Parking & Double Garage
- Open Countryside
- Spacious Accommodation
- 1/4 of an Acre
- Stunning Views
- Local Services & Amenities
- M1 Access
- No Upwards Chain





Whilst every attempt has been made to ensure the accuracy of the floorplan contained herein, measurements of rooms, windows, doors and any other items are approximate and no responsibility is taken for any error, omission or mis-statement. This plan is for illustrative purposes only and should be used as a guide only. Prospective purchasers should verify the accuracy of the floorplan and any other information on their own terms and no guarantee can be given. Map data © OpenStreetMap contributors, Imagery © Mapbox

Occupying 1/4 of an acre grounds, an individually designed & built family home offering spacious accommodation, generous gardens incorporating the potential for a two bedroom detached bungalow, enjoying a sought after position within walking distance of both open countryside and the town centre.



House 42, Locke, 44 Shambles St,
Barnsley S70 2SH
Tel: +44 (0)01226 729009
barnsley@fineandcountry.com

Unit 2 Former Council Offices, Eastgate
Honley, Holmfirth HD9 6PA
Tel: +44 (0)1484 550620
huddersfield@fineandcountry.com

The Balance Floor 7, 2 Pinfold Street
Sheffield, South Yorkshire S1 2GU
Tel: +44 (0)114 404 0044
sheffield@fineandcountry.com