



FINE & COUNTRY

Candle House, Mill Bridge, Castleton

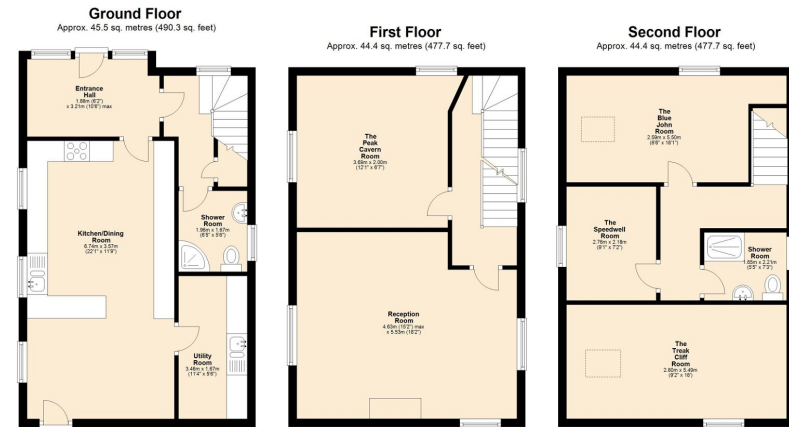
Offers Over £900,000

🛏️ 4 🚿 2 🚻 1



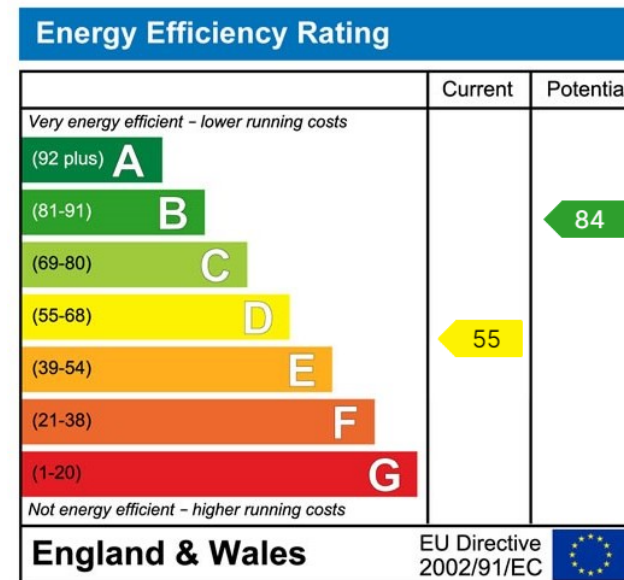
- 4 BEDROOM HIGH SPECIFICATION HOME
- GARDEN BAR, HOT TUB & SUMMER HOUSE
- IMMACULATELY PRESENTED THROUGHOUT
- STUNNING QUIET LOCATION WITH FAR REACHING VIEWS
- LOCAL AMENITIES
- GARAGE & OFF ROAD PARKING
- IDYLIC PEAK DISTRICT LOCATION
- CURRENTLY RUN AS A SUCCESSFUL HOLIDAY LET (OVER £100,000 PA ~~NO UPWARD~~)
- NO UPWARD CHAIN & CONTENTS INCLUDED
- IDYLIC OUTDOORS LIFESTYLE





Total area: approx. 134.3 sq. metres (1445.7 sq. feet)

A stunning property set in approx. 1/3 of an acre, enjoying a peaceful picturesque setting on the edge of this historic village, the house dating back to 1860. Currently run as a successful holiday let with the contents and hot tub included generating in excess of £100,000 pa.



House 42, Locke, 44 Shambles St,
Barnsley S70 2SH
Tel: +44 (0)01226 729009
barnsley@fineandcountry.com

Unit 2 Former Council Offices, Eastgate
Honley, Holmfirth HD9 6PA
Tel: +44 (0)1484 550620
huddersfield@fineandcountry.com

The Balance Floor 7, 2 Pinfold Street
Sheffield, South Yorkshire S1 2GU
Tel: +44 (0)114 404 0044
sheffield@fineandcountry.com