



FINE & COUNTRY

Upper Hoyland Road, Hoyland, Barnsley, S74 9NL

Guide Price £695,000

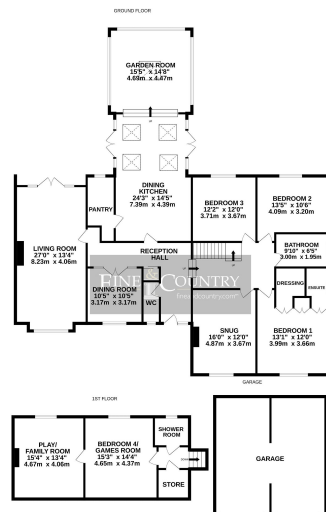
🛏 5 🚿 2 🚗 3



- INDIVIDUALLY DESIGNED AND BUILT HOME
- SOUTH FACING LANDSCAPED GARDENS
- STUNNING OPEN PLAN LIVING KITCHEN
- 3 RECEPTION ROOMS
- OPEN COUNTRYSIDE, LOCAL FACILITIES & M1 ACCESS
- EXCEPTIONAL HIGH QUALITY FINISH THROUGHOUT
- PRIVATE 1/3 OF AN ACRE GROUNDS
- GARDEN ROOM
- 4 OR 5 BEDROOMS
- DOUBLE GARAGE



An exceptional home set within 1/3 of an acre grounds, enjoying south facing gardens, offering spacious accommodation which incorporates 4 or 5 bedrooms, 3 reception rooms and a stunning open plan living area including a kitchen by Smallbone, a dining area and a garden room. ,



Whilst every attempt has been made to ensure the accuracy of the floorplan contained here, measurements of doors, windows, rooms and any other items are approximate and no responsibility is taken for any error, omission or misstatement. This plan is for illustrative purposes only and should be used as such by any prospective purchaser. The services, systems and appliances shown have not been tested and no guarantee as to their operability or efficiency can be given. Made with Metreplan 02/04

House 42, Locke, 44 Shambles St,
Barnsley S70 2SH
Tel: +44 (0)01226 729009
barnsley@fineandcountry.com

Unit 2 Former Council Offices, Eastgate
Honley, Holmfirth HD9 6PA
Tel: +44 (0)1484 550620
huddersfield@fineandcountry.com

The Balance Floor 7, 2 Pinfold Street
Sheffield, South Yorkshire S1 2GU
Tel: +44 (0)114 404 0044
sheffield@fineandcountry.com