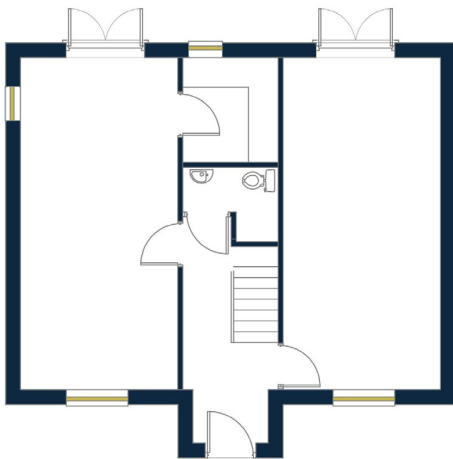
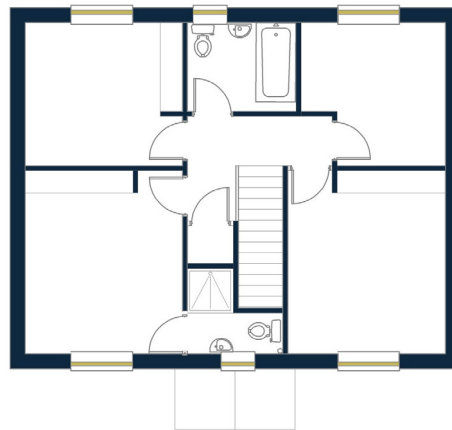




The Lily House



Ground Floor



First Floor

Kitchen Dining	3185	x	6700	Bedroom 1	3185	x	3700
Lounge	3185	x	6700	Bedroom 2	3185	x	3700
				Bedroom 3	3185	x	2900
				Bedroom 4	2915	x	2900

Details are given as a general guide and are subject to alteration. The plans shown are not to scale and the dimensions should be used for reference only and should not be relied upon for ordering carpets and furniture. Photographs/visuals shown are for illustrative purposes only. For individual plot details please contact Canters. These details do not represent any contractual offer or obligation on behalf of Canters.



Specification Highlights

- Energy efficient heating with solar panels as standard & battery storage
- Underfloor zone controlled heating to the ground floor with thermostatic controlled radiators to the first floor
- Choice of high-quality kitchen units with branded integrated appliances
- High electrical specification including downlighting to kitchen, bathrooms as well as TV sockets to most rooms
- Constructed to the latest building regulations
- All detached homes benefit from a larger garage and an electric door
- White Roca sanitary ware and brassware in both bathrooms together with heated towel rails
- Fully tiled walls and floors in the family bathroom and en-suite
- Turfed front and back gardens having paved footpaths and patio area to gardens as design
- Wired for Sky and having super-fast fibre optic broadband.

10 Year Premier Guarantee Warranty