

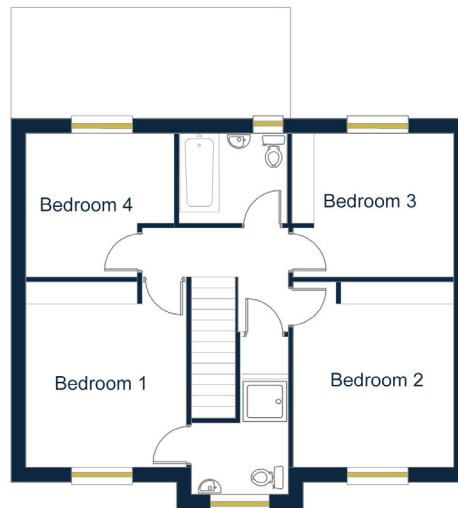


The Dahlia House



Ground Floor

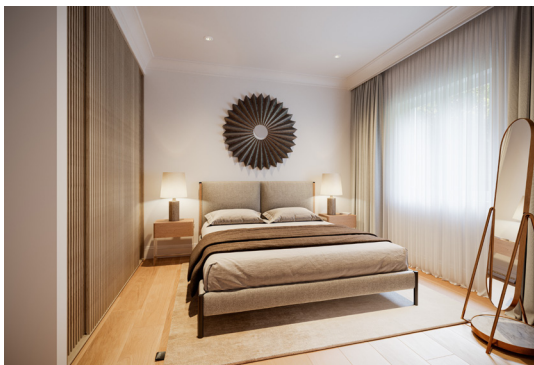
Kitchen Living	8726	x	2700
Dining	5000	x	2250
Lounge	3275	x	4015
Study	3464	x	2250



First Floor

Bedroom 1	3275	x	3780
Bedroom 2	3275	x	3780
Bedroom 3	3300	x	2935
Bedroom 4	3025	x	2935

Details are given as a general guide and are subject to alteration . The plans shown are not to scale and the dimensions should be used for reference only and should not be relied upon for ordering carpets and furniture. Photographs/visuals shown are for illustrative purposes only. For individual plot details please contact Canters. These details do not represent any contractual offer or obligation on behalf of Canters.



Specification Highlights

- Energy efficient heating with solar panels as standard & battery storage
- Underfloor zone controlled heating to the ground floor with thermostatic controlled radiators to the first floor
- Choice of high-quality kitchen units with branded integrated appliances
- High electrical specification including downlighting to kitchen, bathrooms as well as TV sockets to most rooms
- Constructed to the latest building regulations
- All detached homes benefit from a larger garage and an electric door
- White Roca sanitary ware and brassware in both bathrooms together with heated towel rails
- Fully tiled walls and floors in the family bathroom and en-suite
- Turfed front and back gardens having paved footpaths and patio area to gardens as design
- Wired for Sky and having super-fast fibre optic broadband.

10 Year Premier Guarantee Warranty