

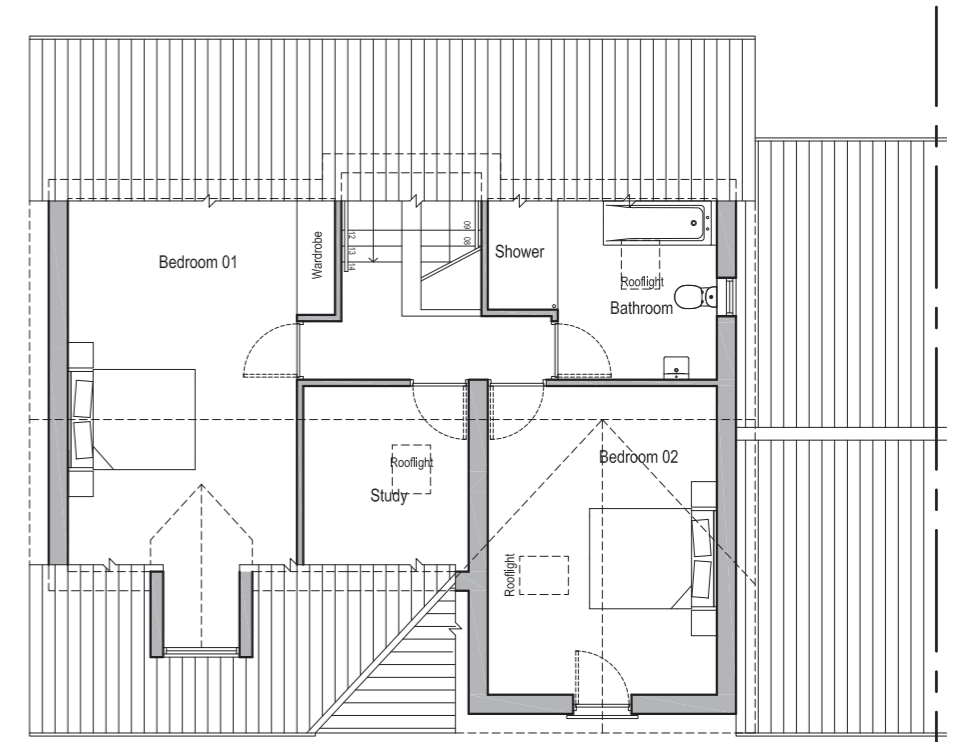
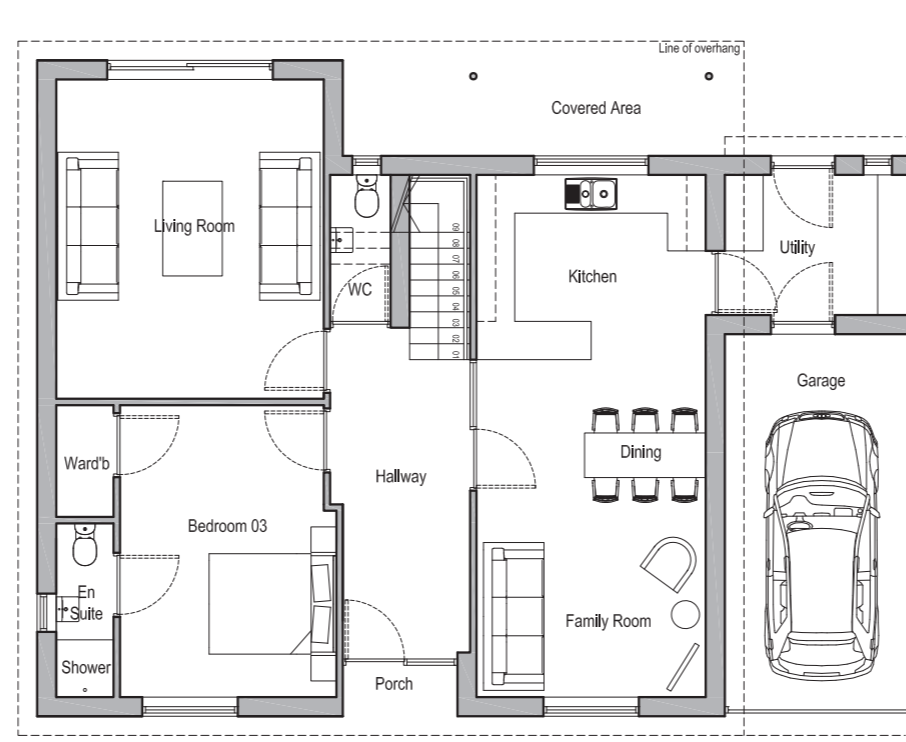


THE GREEN

WALTHAM

Semi Detached Type A 3 Bedroom Dormer Bungalow

GROUND FLOOR	W(m)xH(m)	W(')xH(')
Living Room	4.200mx5.015m	13'9"x16'5"
Kitchen/Dining/Family room	3.600mx8.200m	11'10"x26'11"
Utility	3.000mx2.200m	9'10"x7'3"
Bedroom 3	3.400mx4.585m	11'2"x15'1"
Garage	3.000mx5.900m	9'10"x19'4"
FIRST FLOOR		
Bedroom 1	3.600mx5.862m	11'10"x19'3"
Bedroom 2	3.600mx4.850m	11'10"x15'11"
Study	2.600mx2.915m	8'6"x9'7"



Details are given as a general guide and are subject to alteration. The plans shown are not to scale and the dimensions should be used for reference only and should not be relied on for ordering carpets and furniture. For individual plot details please contact Canters. These details do not represent any contractual offer or obligation on behalf of Canters.